



BISON, An AMETEK Business

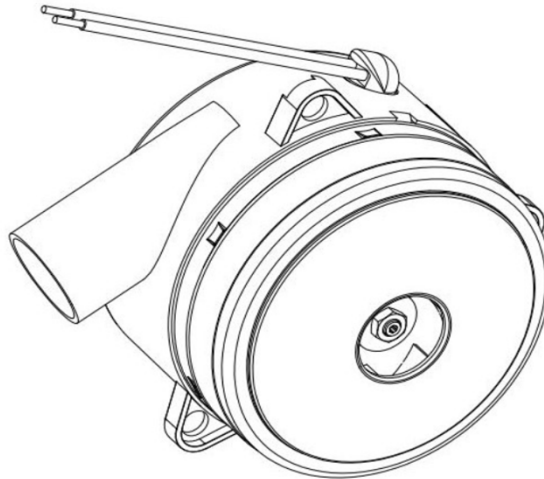
BRUSHLESS - LAMB ELECTRIC

Product Bulletin

Model: 151274-00

DESCRIPTION

- Two stage
- 12 volts DC
- 5.7"/145 mm diameter
- Double ball bearings
- Single speed
- Thru-flow Horn discharge
- Aluminum fan end bracket



SPECIAL FEATURES

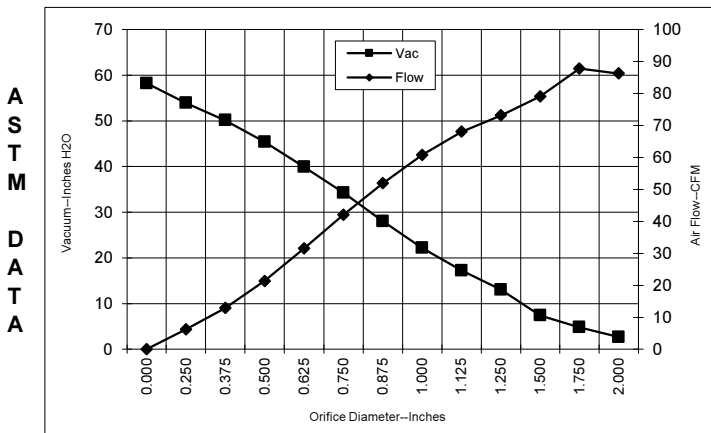
- Brushless 15K+ Hours
- Suitable for 12 volt DC operation
- High air flow fan system
- Custom Solutions Available
- EMI Filtration Included

DESIGN APPLICATION

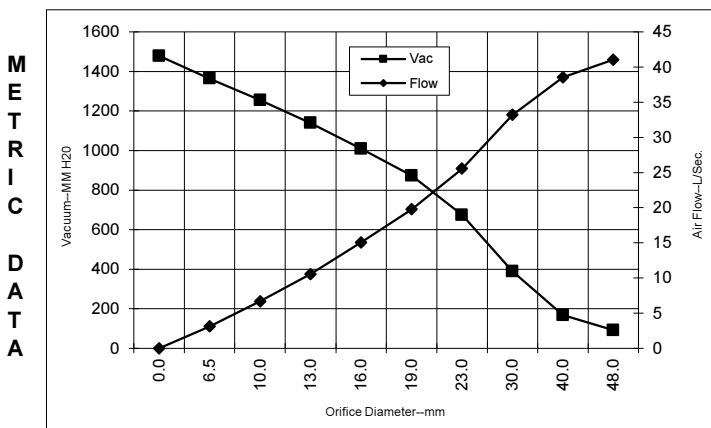
- 12V Battery Powered Vacuum and Pressure Applications
- Designed to handle clean, dry, filtered air only

TYPICAL MOTOR PERFORMANCE.*

(At 12 volts DC, test data is corrected to standard conditions of 29.92 Hg, 68° F.)



Orifice (Inches)	Amps	Watts (In)	RPM	Vac (In.H2O)	Flow (CFM)	Air Watts
2.000	40.4	467	15,468	2.7	86.2	27
1.750	40.4	466	15,468	4.8	87.8	50
1.500	40.7	469	15,369	7.4	79.0	69
1.250	41.0	474	15,271	13.0	73.1	112
1.125	41.0	477	15,369	17.2	68.0	138
1.000	41.3	479	15,369	22.2	60.7	158
0.875	41.4	480	15,369	28.0	51.9	171
0.750	40.2	469	15,566	34.3	42.1	169
0.625	36.5	421	16,059	39.9	31.5	148
0.500	33.0	381	16,650	45.4	21.3	114
0.375	28.9	335	17,339	50.1	12.9	76
0.250	24.7	286	18,128	53.9	6.3	40
0.000	21.3	245	18,719	58.2	0.0	0



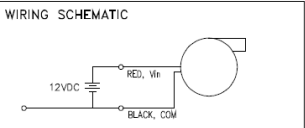
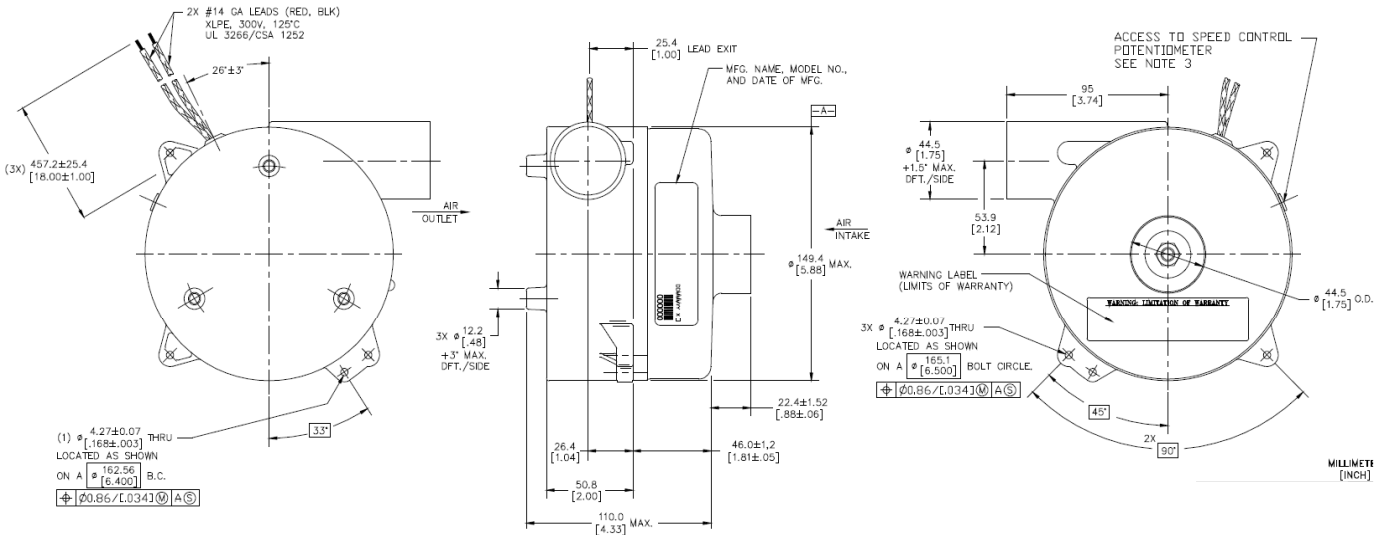
Orifice (mm)	Amps	Watts (In)	RPM	Vac (mm H2O)	Flow (L/Sec)	Air Watts
48.0	40.4	467	15468	92	41.0	37
40.0	40.6	468	15399	168	38.5	63
30.0	41.0	476	15325	390	33.2	126
23.0	41.3	479	15369	675	25.5	168
19.0	40.1	468	15576	873	19.8	169
16.0	36.6	423	16039	1009	15.1	148
13.0	33.3	385	16591	1139	10.6	117
10.0	29.5	342	17236	1255	6.7	81
6.5	24.9	289	18088	1364	3.1	41
0.0	21.3	245	18719	1478	0.0	0

Note: Metric Performance data is calculated from the ASTM data above.

* Data represents performance of a typical motor sampled from a large production quantity. Individual motor data may vary due to normal manufacturing variations.

Test Specs: 11.5 volts	Minimum Sealed Vacuum: 53"	ORIFICE: 3/4"	Minimum Vacuum: 28"	Maximum Watts: 470
-------------------------------	-----------------------------------	----------------------	----------------------------	---------------------------

DIMENSIONS



IMPORTANT NOTE: Pictorial and dimensional data are subject to change without notice. Contact factory for current revision levels.

WARNING - AMETEK Lamb Electric thru-flow vacuum motors must never be used in applications in which wet or moist conditions are involved, where dry chemicals or other volatile materials are present, or where airflow may be restricted or blocked. Such motors are designed to permit the vacuumed air to pass over the electrical winding to cool it. Thus any foam, liquid (including water), dry chemical, or other foreign substance coming in contact with electrical conductors could cause combustion (depending on volatility) or electrical shock. Failure to observe these precautions could result in property damage and severe personal injury, including death in extreme cases. All applications incorporating Lamb Electric motors should be submitted to Underwriters Laboratories Inc. or other appropriate organizations or agencies for testing specifically related to the safety of your equipment.

AMETEK Dynamic Fluid Solutions
www.ametekdfs.com