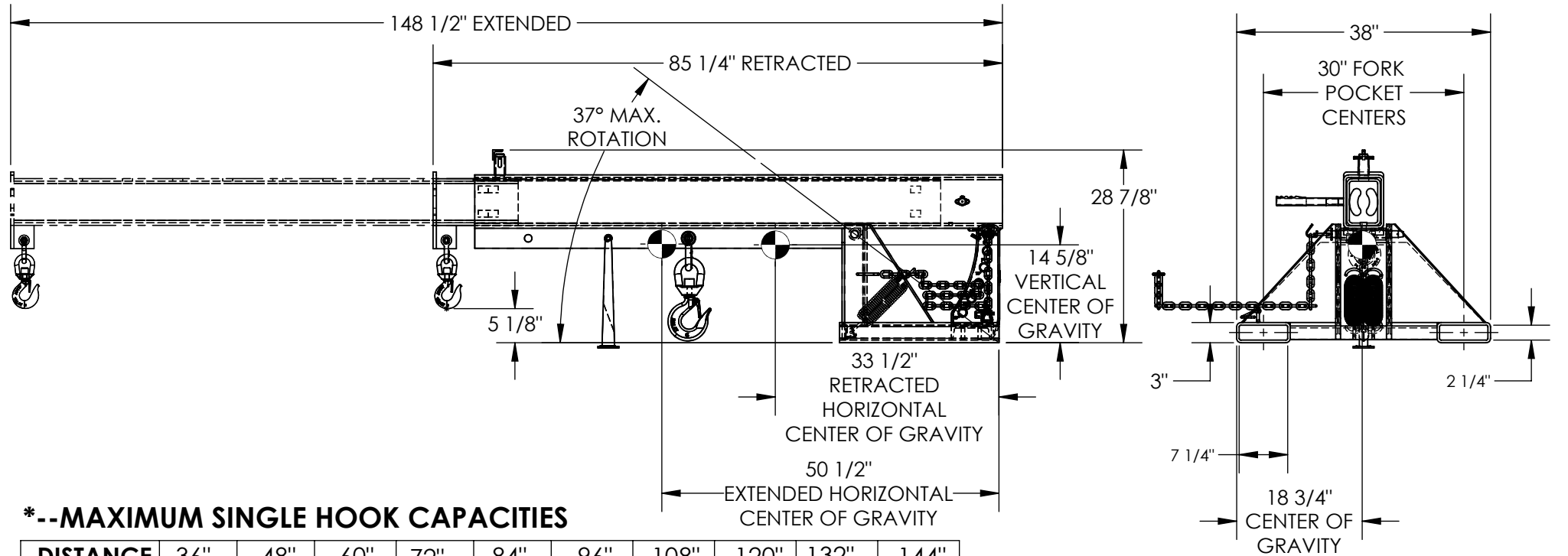


# LIFT MASTER BOOM, ORBIT TELESCOPING BOOM - LM-OBT-8-30

APPROX WEIGHT: 705.15 lbs.  
 DOES NOT INCLUDE WEIGHT OF POWER OR PACKAGING!!!

\*\*\* ANY ADDITIONS, DELETIONS, OR OMISSIONS MUST BE CORRECTED ON THIS DRAWING AS THIS DRAWING WILL BE CONSIDERED ALL INCLUSIVE \*\*\*  
 ALL GRAPHICS PROVIDED ARE FOR REFERENCE ONLY. IF CERTAIN DIMENSIONS ARE CRITICAL PLEASE VERIFY THOSE DIMENSIONS WITH YOUR SALESPERSON



### \*--MAXIMUM SINGLE HOOK CAPACITIES

DISTANCE	36"	48"	60"	72"	84"	96"	108"	120"	132"	144"
CAPACITY	8000	6650	6000	5300	4650	4000	3500	3000	2600	2200

### STANDARD FEATURES

- MODEL NUMBER IS LM-OBT-8-30
- CAPACITY IS 8,000 LBS
- MAXIMUM TILT ANGLE IS 37°
- OVERALL HEIGHT - 28 7/8"
- HEIGHT (MAX TILTED) - 96 1/8"
- LENGTH RETRACTED - 85 1/4"
- LENGTH EXTENDED - 148 1/2"
- OVERALL WIDTH IS 38"
- 36" MINIMUM HOOK POINT
- 144" MAXIMUM HOOK POINT
- HOOK HEIGHT - 5 1/8"
- HOOK HEIGHT (MAX TILTED) - 76 9/16"
- USABLE FORK POCKET - 7 1/4"x2 1/4"
- 30" FORK POCKET CENTERS
- FRAME DURABLE LIQUID PAINT BLUE FINISH
- BOOM DURABLE LIQUID PAINT YELLOW FINISH

### SPECIAL FEATURES

NONE

APPROX. WEIGHT / LOST LOAD = 705.15  
 MINIMUM EFFECTIVE THICKNESS = LESS THAN 1"  
 NEVER EXCEED LOAD CENTER  
 RATING PER FORKTRUCK  
 MANUFACTURERS GUIDELINES.  
 DO NOT USE THIS FORK TRUCK  
 ATTACHMENT IF LOAD WILL  
 EXCEED FORK TRUCK MANUFACTURER'S  
 LOAD CENTER RATING

DIMENSION TOLERANCE ± 1/4"

**UNITS REQUIRING APPROVAL DRAWINGS OR MODIFIED ARE NON-RETURNABLE**

[ ] As drawn      [ ] As marked

Signed: \_\_\_\_\_ Date: \_\_\_\_\_

Printed Name: \_\_\_\_\_

*LEAD TIME WILL START UPON RECEIPT OF SIGNED APPROVAL DRAWING*

DISTRIBUTOR'S NAME:		P.O.#
VESTIL MANUFACTURING		X
DRAWN BY: B.NOTHNAGEL		W.O.#
DATE: 7/6/2015		X
REFERENCE: X	SCALE: 1:18	SALES: X
QUOTED LEAD TIME: X	QUOTE #	FILE NAME:
	X	08-007-313