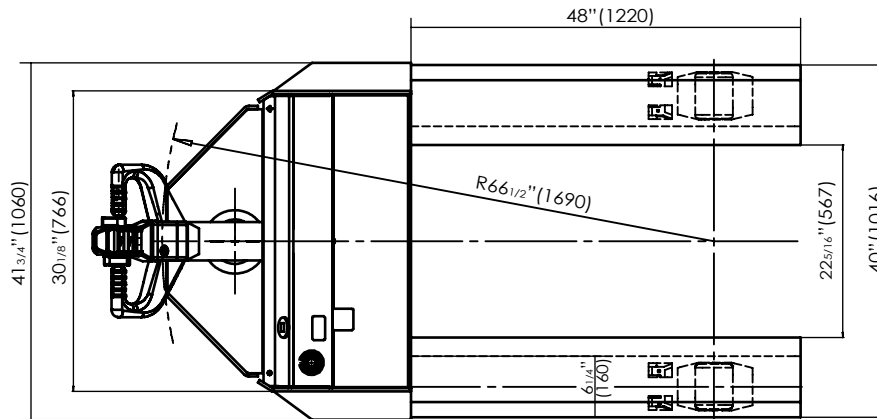
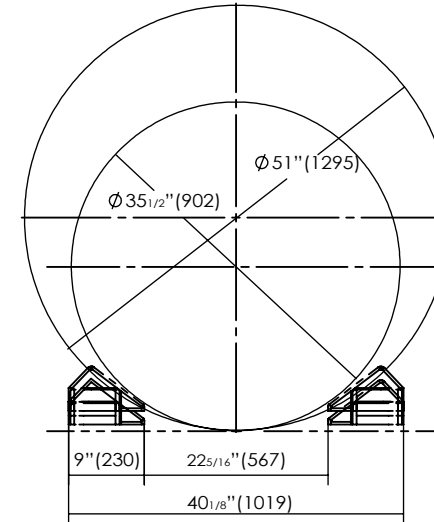
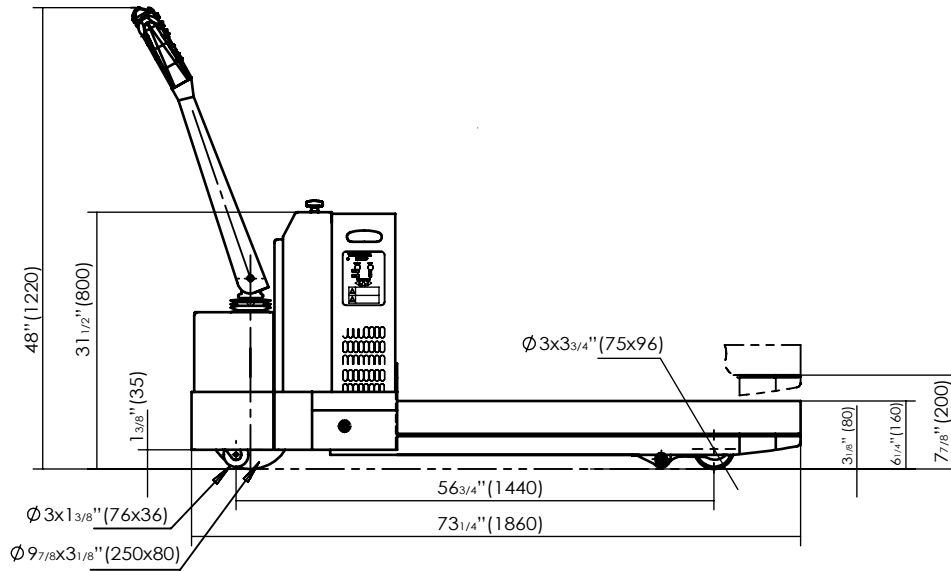


ELECTRIC POWERED ROLL PALLET TRUCK - EPT-4048-45-RL

APPROX WEIGHT: 1180 lbs.
DOES NOT INCLUDE WEIGHT OF POWER OR PACKAGING!!!

*** ANY ADDITIONS, DELETIONS, OR OMISSIONS MUST BE CORRECTED ON THIS DRAWING AS THIS DRAWING WILL BE CONSIDERED ALL INCLUSIVE ***

ALL GRAPHICS PROVIDED ARE FOR REFERENCE ONLY. IF CERTAIN DIMENSIONS ARE CRITICAL PLEASE VERIFY THOSE DIMENSIONS WITH YOUR SALESPERSON



DIMENSION TOLERANCE ± 1/2"

UNITS REQUIRING APPROVAL DRAWINGS OR MODIFIED ARE NON-RETURNABLE

[] As drawn [] As marked

Signed: _____ Date: _____

Printed Name: _____

LEAD TIME WILL START UPON RECEIPT OF SIGNED APPROVAL DRAWING

DISTRIBUTOR'S NAME:		P.O.#	X
X		W.O.#	X
DRAWN BY:	X	DATE:	SALES: X
REFERENCE:	X	SCALE: NTS	FILE NAME:
QUOTED LEAD TIME:	X	QUOTE #	N/A
			EPT-4048-45-RL

APPROVAL

STANDARD FEATURES

- MODEL NUMBER IS: EPT-4048-45-RL
- MAX UNIFORM CAPACITY IS: 4,500 Lbs
- OVERALL FORK WIDTH IS: 40"
- OVERALL FORK LENGTH IS: 48"
- HANDLES ROLL SIZES OF: Ø35 1/2" TO Ø51"
- RAISED FORK HEIGHT IS: 7 7/8"
- 1.2 KW DRIVE MOTOR & 2.0 KW LIFT MOTOR
- (4) 6V, 200Ah DEEP CYCLE BATTERIES
- DURABLE BAKED IN POWDER COATED BLACK AND YELLOW FINISH

SPECIAL FEATURES

NONE

24V DC POWER

ON-BOARD BATTERY INDICATOR & CHARGER
CONTACT FACTORY FOR OTHER POWER OPTIONS