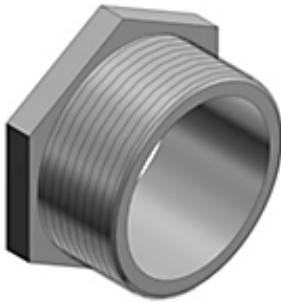




Actual



Representative

**Catalog Number:** 851  
**Product ID:** 7TAD013120R0004  
**UPC Number:** 78621000851  
**EAN Number:** 05414363146674  
**Status:** A

4 Inch Chase Nipple, Malleable Iron for Use with Rigid/IMC Conduit

**North American Specifications (UNSPSC)**

UNSPSC	39131718 Electrical conduit nipple
IGCC	5753 Electrical conduit nipple
Type	Chase Conduit Nipple
Application	To Effectively Bush Factory or Field-Punched, Cut, or Drilled Holes In Metal Boxes or Enclosures. To Couple Boxes Back-to-Back
Standard	UL E23018, CSA
Material	Malleable Iron
Trade Size	4 in

**European Specifications (ETIM)**

ETIM	EC001469 Protective hose adapter
With outer thread	Y
Thread size outer thread metric	103
Material housing	Other
Material quality	Other
Surface protection	Untreated
Model	Straight
Material sealing	No sealing

**Packaging**

Inner Quantity	1
Inner Dimensions (inches)	4x4.5x6
Outer Quantity	5
Outer Dimensions (inches)	21x5x6.5
Weight Uom	176 lbs. per 100

**Documents / Support Tools**

Technical Drawing / Data Sheet	WSD-001846
--------------------------------	------------

**Header**

3D Model	Available on Website
----------	----------------------