

## Operating Instructions for the TAKE-A-LABEL Model TAL-750HD-18

*Note:* The TAKE-A-LABEL dispenser is shipped mounted to a base to prevent shifting in the container.

1. Remove the machine from the base.

\*\*Always load the TAKE-A-LABEL dispenser with the On-Off switch in the (OFF) position.\*\*

2. To load a roll of labels on the TAKE-A-LABEL, using the Unwind Blade to grip the inside of the core.

3. It may be necessary to raise or lower the height of the Unwind Blade to cut into the 3" core.

4. Thread the loose end of the labels under and up the front of the peel plate.

5. Pull the labels over the top of the peel plate far enough to reach the waste take-up roll.

6. Remove the waste wind clip, thread the label backing paper under the clip, and reinsert clip over loose paper.

7. Position the Photo Eye or Micro Switch Assembly by loosening the wing nuts and moving assembly to the right or left, so the sensor is at or near the center of the labels. The Photo Eye or Micro Switch Assembly can be tilted forward or backward by loosening the mounting bracket's vertical adjustment wing nut.

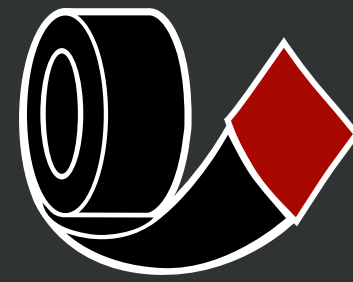
8. Turn on the On-Off switch. The waste wind shaft will turn, winding up the backing paper and dispensing a label at the top of the peel plate. When the Photo Eye or Micro Switch senses the dispensed portion of the label, the motor will stop. As each label is removed, the machine will operate until the next label is in position to be removed. (CAUTION:) Turn off switch before removing wound up waste.



TAL-450 Model Shown

9. If the labels tend to follow the backing paper over the top of the peel plate instead of peeling off, then there is insufficient tension on the web of the labels. Loosen the Nylon Tipped Set Screw and unscrew the Unwind Tension Knob to desired tension.

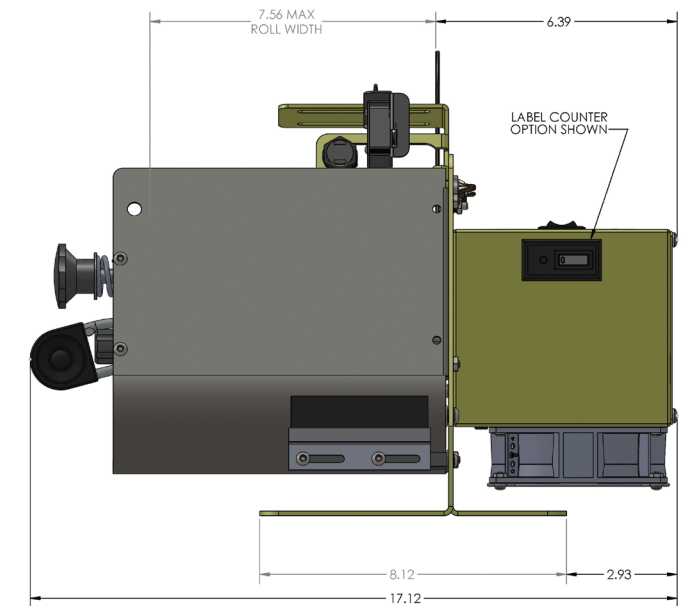
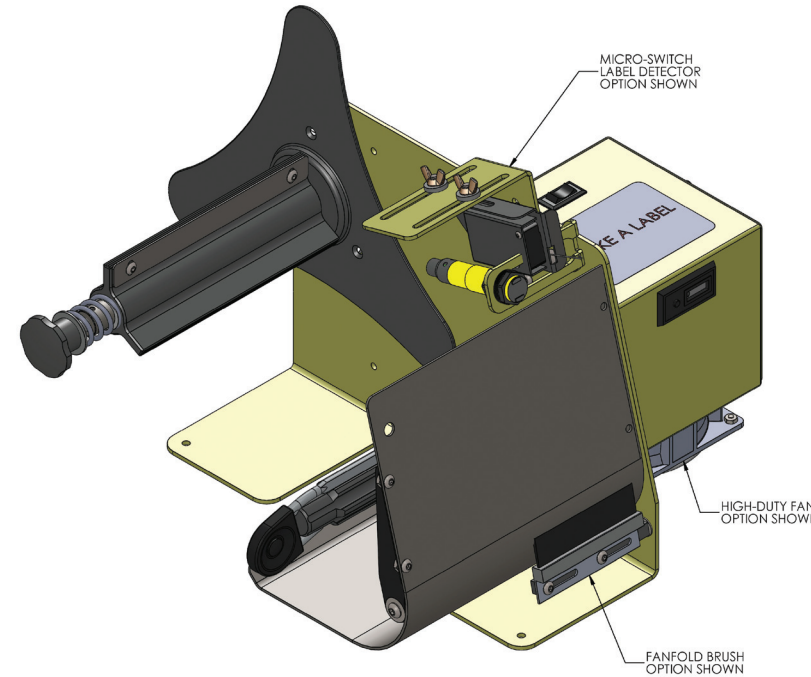
10. If the motor stalls there may be too much tension and it may be necessary to unscrew the Unwind Tension Knob most of the way.



# TAKE-A-LABEL

# Operating Instructions

## General Specifications, Model 750

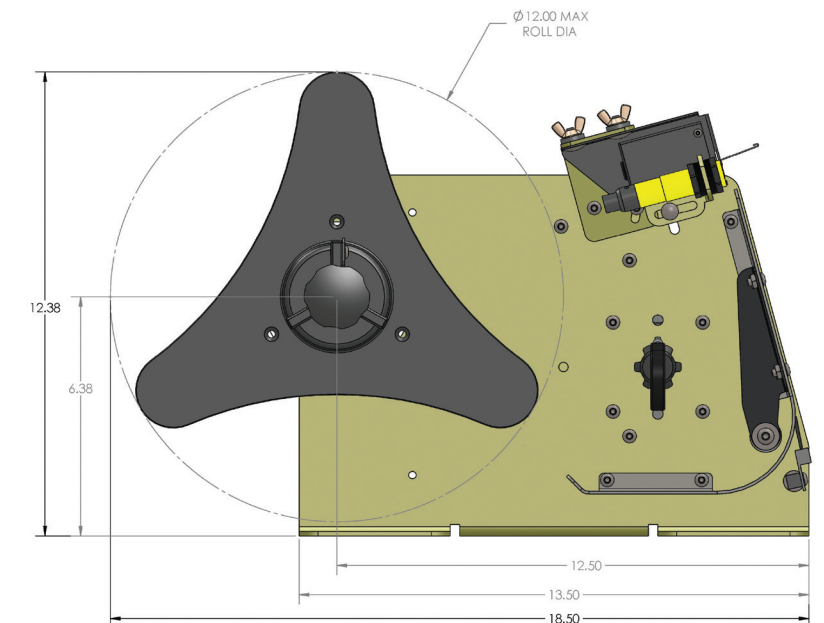


### General Specifications, Model 750

Size (Approx.):  
17.12W x 12.38H x 18.50D

Shipping Weight:  
26 lbs (12 KG)

Electrical:  
110/120VAC, 50/60HZ,  
4 AMP FUSE

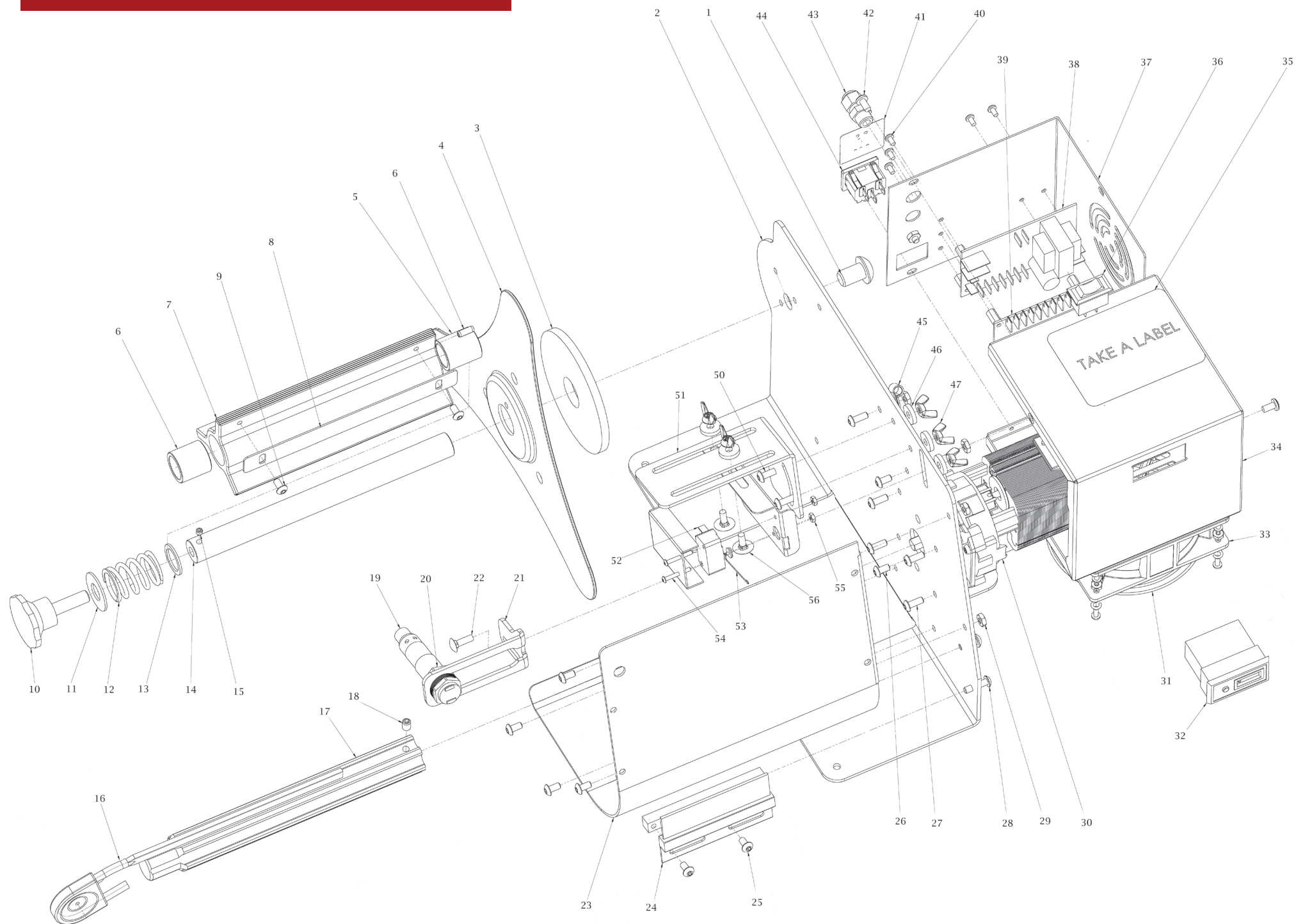


## TAKE-A-LABEL, Inc.

The Industry Standard in Label Dispensers and Applicators



# TAL 750 Label Dispenser Exploded View



ITEM#	PART NUMBER AND DESCRIPTION	NOTES	QTY.
1	30653, 0.5-13x0.75 BHCS		1
2	25201, 250, 450, 750 Main frame		1
3	72618, Felt Washer		1
4	45136, Unwind Disk		2
Not Shown	75801, Heavy Duty Unwind Assembly	Complete Heavy Duty Assembly	1
5	75805, Spindle core lock blade		1
6	75816, Backing Plt. Lock Pin		1
7	75811, Raw Spindle		1
8	75805, Unwind Blade		1
9	45175, 10-32x.375 BHCS		2
10	75803, Unwind Knob		1
11	75817, Nylon Washer		1
12	75812, Unwind Spring		1
13	75817, Nylon Washer		1
14	75802, Unwind shaft		1
15	75812, Nylon Tipped Set Screw		1
16	72610, 750 Waste Wind Clip		1
17	72613, Waste Wind Shaft		1
18	30652, Set Screw		1
19	25213, Photo Eye	Photo Eye Label Sensor	1
20	25213, Photo Eye Ring Nut	Photo Eye Label Sensor	2
21	25204, Photo Eye bracket	Photo Eye Label Sensor	1
22	0.19-32x0.5 BHCS		1
23	72612, Peel plate		1
24	70011, Fan Fold Brush Assembly	Optional: Fan Fold Adapter	1
25	45175, 10-32x.375 BHCS		2
26	45175, 10-32x.375 BHCS		4
27	25127, 10-32x.75 BHCS		4
28	40007, Power switch		1
29	45120, Label, thermal protection		1
30	76800, Merkle-Korff S-3815		1
31	75835, Heavy Duty Cooling Fan Guard	Optional: Heavy Duty Cooling Fan	1
32	30202, Cub 7 counter, DIN size	Optional: Label Counter	1
33	75834, Heavy Duty Cooling Fan	Optional: Heavy Duty Cooling Fan	1
34	25202, 250, 450, 750 Motor Housing		1
35	Label, Company logo		1
36	40007, On/Off switch		1
37	25203, 250, 450, 750 Motor Housing Cover		1
38	45102, PCB - 450, 750 CS	Optional: Used with Special DC Photo Eyes	1
39	45100, Control Board- 250, 450, 750		1
40	6-32x.375 BHCS		2
41	45120, Label, thermal protection		1
42	45175, 10-32x.375 BHCS		1
43	81912, Small cord grip		2
44	25211, IEC Outlet		1
Not Shown	25212, IEC Line cord, US		1
45	45186, P-clip		1
46	45182, Washer, nylon		1
47	45180, Wing Nut		1
50	45183, 10-32x.500 BHCS		1
51	25120, Switch support bracket	Micro Switch-Style Label Sensor	1
52	45307, Micro Switch	Micro Switch-Style Label Sensor	1
53	45308, Trip Wire	Micro Switch-Style Label Sensor	1
Not Shown	45409, Micro Switch Assembly	Complete Assembly 2018 and Newer	1
54	45178, 0.19-32x0.75 BHCS	Micro Switch-Style Label Sensor	2
55	45179, 4-40 Hex Nut	Micro Switch-Style Label Sensor	2
56	45181, Carriage Bolt		3

ITEM#	PART NUMBER AND DESCRIPTION	NOTES	QTY.
<b>COMMON PARTS FOR PRIOR MODEL YEARS</b>			
Not Shown	45208, Trip Wire	2014 and Older Models	1
Not Shown	45309, Switch Assembly	2016 and Older Models	1
Not Shown	81905, Photo Eye	2016 and Older Models	1
Not Shown	81906, Relay	2016 and Older Models	1
Not Shown	81907, Relay Socket	2016 and Older Models	1
Not Shown	25119, Lighted On/Off Switch	2007 and Older Models	1
Not Shown	45217, Power Cord	2016 and Older Models	1
Not Shown	45153, Power Cord Clamp	2016 and Older Models	1
Not Shown	45155, Fuse Holder	2016 and Older Models	1
Not Shown	45157, Fuse	2016 and Older Models	1