

Product data sheet

Specifications

SQUARE D

Green Premium™



Mini branch circuit breaker,
Homeline, 200A, 2 pole,
120/240VAC, 10kA AIR, standard
type, plug in, UL

HOM2200BB

Product availability : Stock - Normally stocked in distribution facility

Main

Product	Miniature circuit-breaker
Range	Homeline
Current Rating	200 A
Certifications	UL Listed
Voltage Rating	120/240 V AC
Mounting Type	Plug-in
Number of Poles	2P
Short Circuit Current Rating	10 kA
Number of Spaces	4
Circuit Breaker Type	Standard
Ratings	HACR rated
Electrical Connection	Box lugs
Wire Size	1 x AWG 4...300 kcmil (aluminium/copper)

Complementary

Tightening torque	250.48 lbf.in (28.3 N.m) 0.15...0.23 in² (95...150 mm²) (AWG 4/0...250 kcmil)
-------------------	---

Environment

Ambient air temperature for operation	104 °F (40 °C)
---------------------------------------	----------------

Ordering and shipping details

Category	00144-HOM BREAKERS 150-200A
Discount Schedule	DE3D
GTIN	785901876601
Returnability	Yes
Country of origin	MX

Packing Units

Unit Type of Package 1	PCE
Number of Units in Package 1	1
Package 1 Height	5.80 in (14.732 cm)
Package 1 Width	7.30 in (18.542 cm)
Package 1 Length	8.00 in (20.32 cm)
Package 1 Weight	3.06 lb(US) (1.388 kg)

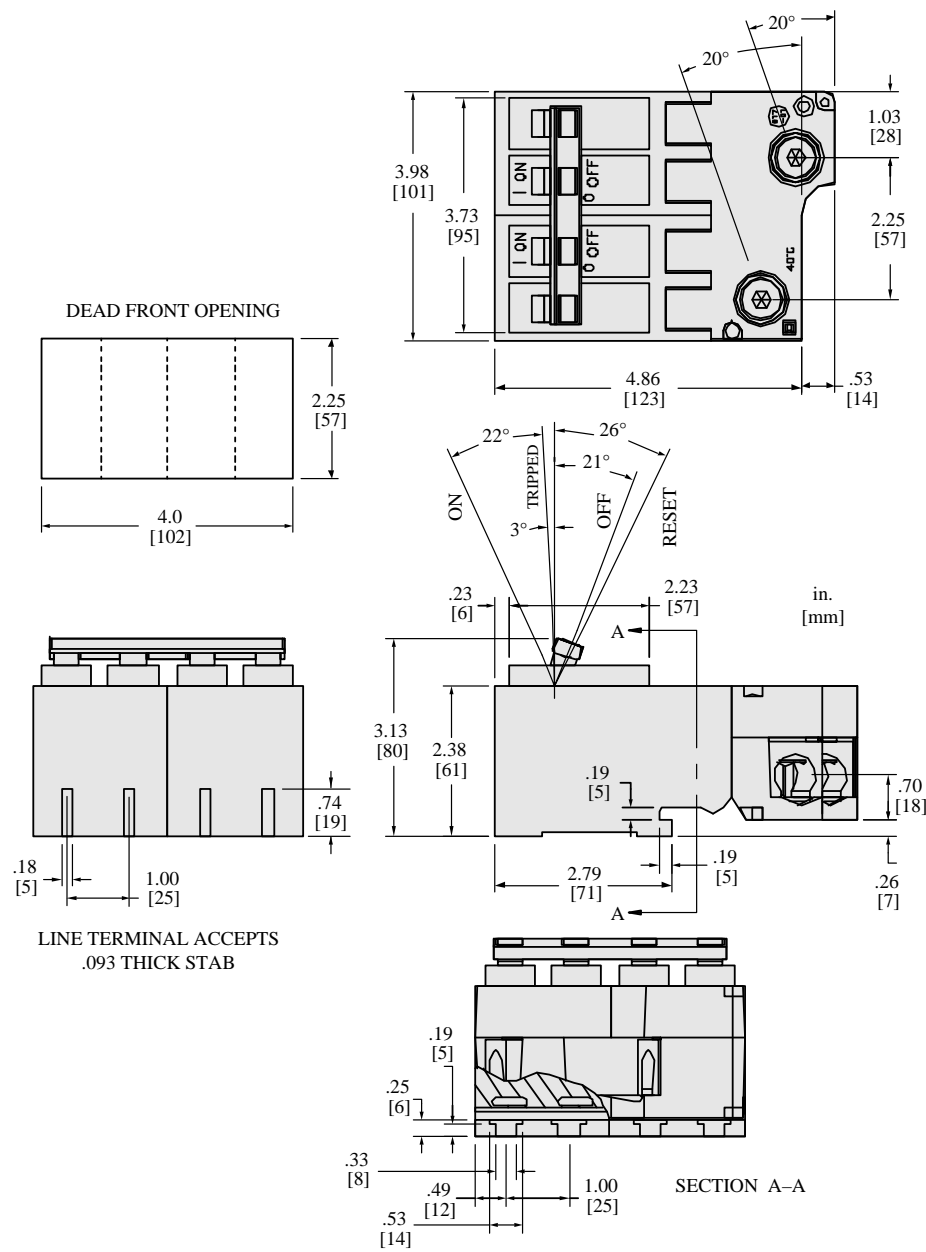
Offer Sustainability

Sustainable offer status	Green Premium product
California proposition 65	WARNING: This product can expose you to chemicals including: Cadmium and cadmium compounds, which is known to the State of California to cause cancer and birth defects or other reproductive harm. For more information go to www.P65Warnings.ca.gov
REACH Regulation	REACH Declaration
EU RoHS Directive	Compliant EU RoHS Declaration
Mercury free	Yes
China RoHS Regulation	China RoHS declaration Product out of China RoHS scope. Substance declaration for your information.
RoHS exemption information	Yes
Environmental Disclosure	Product Environmental Profile

Contractual warranty

Warranty	Lifetime
----------	----------

Dimensions



All dimensions are approximate.
Also refer to technical drawings and documentation.

Recommended replacement(s)