

Part No: 826-140X12

Schedule 80 PVC & CPVC

Expansion Joint

Desc: 14 PVC EXPANSION JOINT SOCX12 EPDM

MSRP: 5514.16

Part Code: 085

Weight(lbs): 174.52

Weight(kg): 79.161

Weight(gm): 79161

Size: 14"

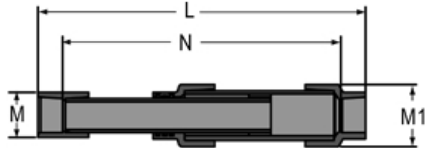
Color: GRAY

Material: PVC

Connection Fabricated Socket

Travel Length 12" Travel

NOTE T = TRAVEL



T = 12

L- = 46-3/4  
CLOSED

M = 15-1/2

M1 = 16

N- = 32  
CLOSED

L-OPEN = 58-3/4

N-OPEN = 44

**Fabricated Dimension References:**

G = (LAYING LENGTH) intersection of center lines to bottom of socket/thread; 90° elbows, tees, crosses; ± 1/4 & larger ± 1/2 inch.

H = Intersection of center lines to face of fitting; 90° elbows, tees, crosses; ± 1/4 inch.; wyes ± 1/2 inch; 14" & larger inch.

J = Intersection of center lines to bottom of socket/thread; 45° elbows; ± 1/4 inch; 14" & larger ± 1/2 inch.

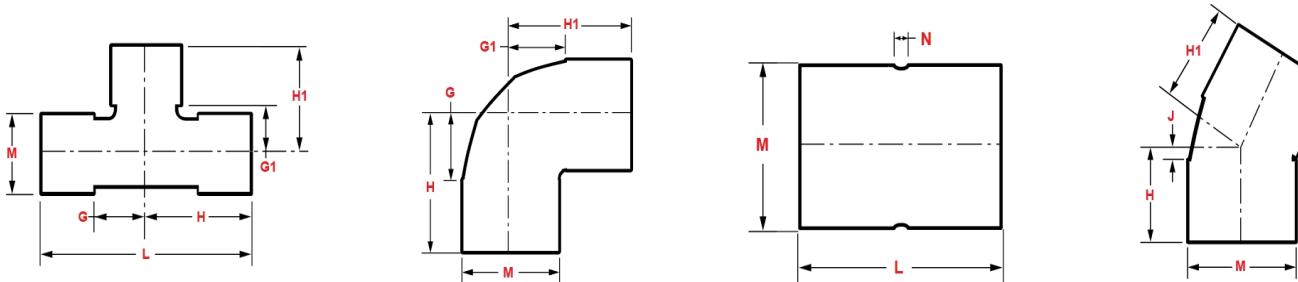
L = Overall length of fittings; ± 1/2 inch; wyes ± 1 inch; 14" & larger ± 1 inch.

M = Outside diameter of socket/thread hub; ± 1/4 inch.

N = Socket bottom to socket bottom; couplings; ± 1/2 inch.

W = Height of cap; ± 1/4 inch.

**Typical Fabricated Dimension References**



The information printed here is based on current information & product design at the time of publication and is subject to change without notification. Spears® ongoing commitment to product improvement may result in some variation. No representation, guarantees or warranties of any kind are as to its accuracy, suitability for particular application or results to be obtained therefrom. For verification of technical data or additional information, please contact Spears® Technical Service Department :: WEST COAST : (818) 364-1611 - EAST COAST : (717) 938-9006