

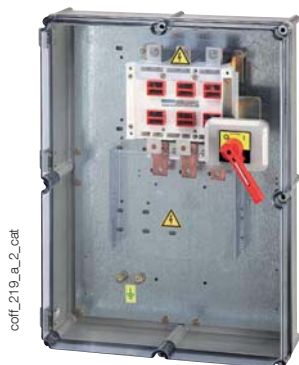
Safety enclosures

Normal atmospheres

Polyester enclosures from 50 to 1600 A

References

Front operation



coeff_219_a_2_cat

Side operation



coeff_163_b_1_cat

Rating (A)	No. of poles	Front operation ⁽¹⁾⁽²⁾	
		Top/Bottom connection	Bottom/Bottom connection
		Reference	Reference
125	3 P	3215 3012	3225 3012
125	4 P	3215 4012	3225 4012
125	6 P	3215 6012	3225 6012
200	3 P	3215 3020	3225 3020
200	4 P	3215 4020	3225 4020
200	6 P	3215 6020	3225 6020
400	3 P	3215 3040	3225 3040
400	4 P	3215 4040	3225 4040
400	6 P	3215 6040	3225 6040
500	3 P	3215 3050	3225 3050
500	4 P	3215 4050	3225 4050
630	3 P	3215 3063	3225 3063
630	4 P	3215 4063	3225 4063
800	3 P	3215 3080	3225 3080
800	4 P	3215 4080	3225 4080
1250	3 P	3215 3120	3225 3120
1250	4 P	3215 4120	3225 4120
1600	3 P	3215 3160	3225 3160
1600	4 P	3215 4160	3225 4160

Rating (A)	No. of poles	Side operation ⁽¹⁾⁽²⁾	
		Top/Bottom connection	Bottom/Bottom connection
		Reference	Reference
50	3 P	3265 3005	3265 3005
50	4 P	3265 4005	3265 4005
50	6 P	3265 6005	3265 6005
80	3 P	3265 3008	3265 3008
80	4 P	3265 4008	3265 4008
80	6 P	3265 6008	3265 6008
125	3 P	3265 3012	3275 3012
125	4 P	3265 4012	3275 4012
125	6 P	3265 6012	3275 6012
200	3 P	3265 3020	3275 3020
200	4 P	3265 4020	3275 4020
200	6 P	3265 6020	3275 6020
400	3 P	3265 3040	3275 3040
400	4 P	3265 4040	3275 4040
500	3 P	3265 3050	3275 3050
500	4 P	3265 4050	3275 4050
630	3 P	3265 3063	3275 3063
630	4 P	3265 4063	3275 4063
800	3 P	3265 3080	3275 3080
800	4 P	3265 4080	3275 4080
1250	3 P	3265 3120	3275 3120
1250	4 P	3265 4120	3275 4120
1600	3 P	3265 3160	3275 3160
1600	4 P	3265 4160	3275 4160

(1) For the mechanical indicator option, replace the second digit of the enclosure reference number with the letter V.
For example: 3V15 3012.

(2) Stainless steel enclosures, specific locking systems, terminal pre-wired/non pre-wired control auxiliary contacts, ventilation and humidity evacuation systems or cable glands are available upon request. Please consult us.

Accessories

Auxiliary contacts

Use

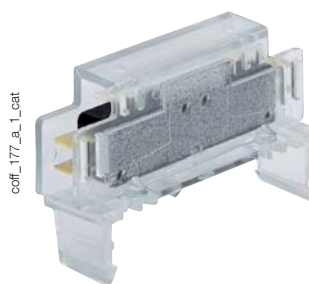
For pre-breaking and signalling of positions 0 and I of the load break switch.

Mounting

- On the double locking system.
- Possibility of factory mounting on enclosure (please provide enclosure reference when ordering).

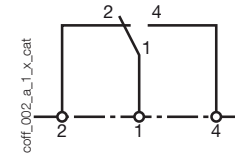
Contact(s)	A/C	Factory fitted A/C	Factory fitted low level auxiliary:
1 st NO/NC changeover A/C front operation \geq 125 A	2799 0001	2799 1001 ⁽¹⁾	
2 nd NO/NC changeover A/C front operation \geq 125 A	2799 0002	2799 1002 ⁽¹⁾	
2 NO/NC changeover A/C side operation	2999 0012	2999 1012	
2 NO/NC changeover A/C wired side operation	3290 6002	3290 6012 ⁽¹⁾	3290 6102 ⁽¹⁾

(1) Please provide the reference number of the enclosure to be equipped.



coeff_177_a_1_cat

1st NO/NC A/C for pre-break

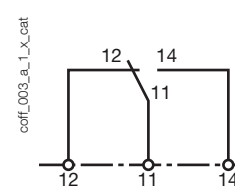


coeff_002_a_1_x_cat



coeff_178_a_1_cat

2nd NO / NC A/C for pre-break



coeff_003_a_1_x_cat