



Main

Range of product	Altivar
Product or component type	EMC input filter
Range compatibility	Lexium 05 Altivar 312 Altivar 31C Lexium 23 Plus Altivar 312 Solar Altivar Machine ATV320
Product compatibility	Servo drive LXM230.75 kW Servo drive LXM231 kW Servo drive LXM231.5 kW ATV312HU11M2 ATV312HU15M2 ATV31CU11M2 ATV31CU15M2 LXM05AD17F1 LXM05AD17M2 LXM05BD17F1 LXM05BD17M2 LXM05CD17M2 Variable speed drive ATV320...C1.1 kW, 200...240 V single phase Variable speed drive ATV320...C1.5 kW, 200...240 V single phase Variable speed drive ATV320...W/ ATV320...WS1.1 kW, 200...240 V single phase Variable speed drive ATV320...W/ ATV320...WS1.5 kW, 200...240 V single phase
Product specific application	Radio interference input filter
Line Rated Current	16 A
Thermal losses	6.9 W ATV31CU11M2
Phase	Single phase

Complementary

Maximum earth leakage current	150 mA 50 Hz
Power supply voltage	200...240 V
Tolerance	10 %
Net Weight	1.71 lb(US) (0.775 kg)

Environment

IP degree of protection	IP20 IP41 (upper part)
Relative humidity	0...93 % conforming to IEC 68-2-3
Ambient air temperature for operation	-10...50 °C
Ambient air temperature for storage	-13...158 °F (-25...70 °C)
Operating altitude	<= 1000 m without current derating 3280.84...9842.52 ft (1000...3000 m) with current derating 1 % per 100 m
Vibration resistance	1 gn (f= 13...150 Hz) conforming to IEC 60068-2-6 1.5 mm peak to peak (f= 3...13 Hz) conforming to IEC 60068-2-6
Shock resistance	15 gn 11 ms EN/IEC 60068-2-27
Standards	EN 133200 EN/IEC 61800-3

Ordering and shipping details

Category	22154 - ATV320/ATV312/ATV32 ACCESSORIES
Discount Schedule	CP4B
GTIN	00785901696438
Nbr. of units in pkg.	1
Package weight(Lbs)	1.71 lb(US) (0.78 kg)
Returnability	No
Country of origin	TH

Packing Units

Package 1 Height	0.500 dm
Package 1 width	1.860 dm
Package 1 Length	2.420 dm

Offer Sustainability

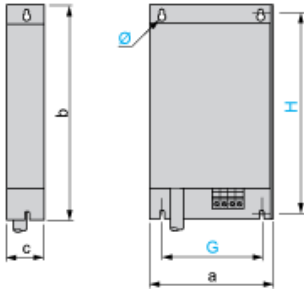
California proposition 65	WARNING: This product can expose you to chemicals including: Lead and lead compounds, which is known to the State of California to cause cancer and birth defects or other reproductive harm. For more information go to www.P65Warnings.ca.gov
REACH Regulation	REACH Declaration
REACH free of SVHC	Yes
EU RoHS Directive	Pro-active compliance (Product out of EU RoHS legal scope) EU RoHS Declaration
Toxic heavy metal free	Yes
Mercury free	Yes
RoHS exemption information	Yes
China RoHS Regulation	China RoHS Declaration

Contractual warranty

Warranty	18 months
----------	-----------

Additional EMC Input Filters

Dimensions



Dimensions in mm

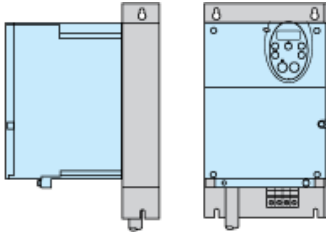
a	b	c	G	H	Ø
107	195	35	85	180	4.5

Dimensions in in.

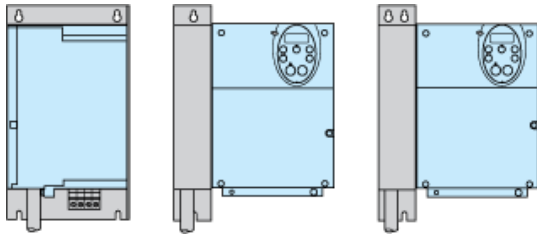
a	b	c	G	H	Ø
4.12	7.68	1.38	3.35	7.09	0.18

Additional EMC Input Filter

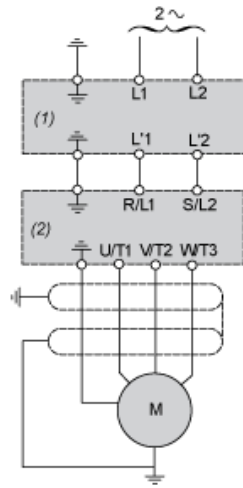
Mounting the Filter under the Drive



Mounting the Filter next to the Drive



Recommended Schema



- (1) Filter
- (2) Drive