

## Eye nut RM - 1"-8BSW

Artikel-Nr: 7993989



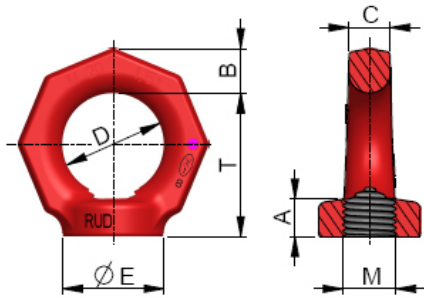
For the RUD RM - eye nuts, the threaded connector component must be of at least quality grade 8.8

- Considerably higher WLL (in comparison to DIN 582) at vertical load.
- Large thread and WLL range (M6-M48, 0.1 t – 8 t).
- Clear marking of the minimum WLL for all loading directions.
- Quick and easy installation with just one bolt connection.

Other important RUD specific information and specialities to our RUD lifting points can be found in the specific user instruction.

## Eye nut RM - 1"-8BSW

Artikel-Nr: 7993989



<b>weight</b>	0.70 kg	1.54 lbs
<b>Nominal WLL</b>	2000 kg	4400 lbs
<b>T</b>	70 mm	2-3/4"
<b>A</b>	22 mm	7/8"
<b>B</b>	21 mm	13/16"
<b>C</b>	20 mm	3/4"
<b>D</b>	50 mm	1-31/32"
<b>E</b>	50 mm	1-31/32"
<b>M</b>	1" mm	1"