

PATLITE® Industrial LED Lighting



Aluminum LED Light Bars (CWK, CLK series)

These rust-free aluminum body light bars are designed to be bracket mounted. LED module lenses are clear and provide bright daylight white light. The super slim design is ideal for tight spaces. Up to IP69K options available.



Polycarbonate LED Light Bars (CWF series)

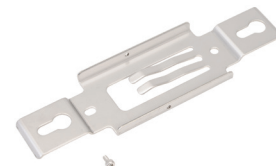
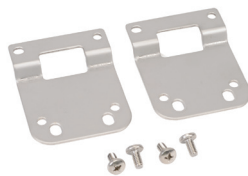
These lightweight polycarbonate LED light bars are designed to be bracket mounted. LED module lenses are clear and provide bright daylight white light. The super slim and lightweight design is ideal for tight spaces. Up to IP69K options available.



LED Signal Tower (HSST series)

An all-in-one package for controlling LR5 signal lights. Available red, amber, and green lights with clear lenses. Designed for indoor, upright installation. IP54 rated.

Accessories



PATLITE® LED Light Bars - CWK Series

Features

- Unique lens design ensures optimal light distribution
- Daylight color, up to 1500lx illuminance
- Compact design with high resistance to debris and fluids
- Meets IP66/67 standards
- Designed to operate in temperatures from -10 to +50°C [+14 to +122°F]
- Three lengths available – 200, 300, and 600mm [7.9, 11.8, and 23.6 inches]
- Constructed of tempered glass and aluminum



CWK2S-24-CD

LED Light Bars - CWK Series							
Part Number	Price	Drawing Link	Description	Light Color	Body Material	Light Length (mm [in])	Cable Length m [ft]
CWK2S-24-CD	\$139.00	PDF	LED light bar, bracket mount, pigtail connector. Mounting bracket included.	Daylight white	Aluminum	200 [7.9]	3 [9.8]
CWK3S-24-CD	\$164.00	PDF				300 [11.8]	
CWK6S-24-CD	\$304.00	PDF				600 [23.6]	

Specifications

LED Light Bars - CWK Series Technical Specifications				
Part Number		CWK2S-24-CD	CWK3S-24-CD	CWK6S-24-CD
Luminous Color		Daylight white		
Color Temperature		6500K		
Illuminance (@24VDC)	1.0 m	600lx	850lx	1500lx
Luminous Flux		800lm	1200lm	2400lm
Rated Voltage		24VDC (polarized)		
Operating Voltage Range		24VDC ± 10%		
Rated Current Consumption		360mA ± 10%	480mA ± 10%	960mA ± 10%
Rated Power Consumption		8.64 W	11.52 W	23.04 W
Operating Ambient Temperature		-10°C to +50°C [+14°F to +122°F]		
Operating Ambient Humidity		Less than 90% (no condensation)		
Mounting Location		Indoors		
Mounting Direction		All directions		
Protection Rating		IP66/67 (JIS C0920)		
Insulation Resistance		More than 5MΩ at 500VDC		
Withstanding Voltage		500VAC applied for 1 minute between terminals and chassis		
Vibration Resistance		20.0 m/s ² (30Hz)		
Weight		600g [21.2 oz]	750g [26.5 oz]	1230g [43.4 oz]
Agency Approvals *		Conforms to CE requirements: EN 55015, EN61000-6-2 RoHS Directive (2011/65/EU) UL Listed (E306141)		

* To obtain the most current agency approval information, see the Agency Approval Checklist section on the specific part number's web page.

PATLITE® LED Light Bars - CLK Series

Features

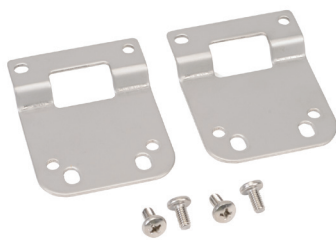
- Unique lens design ensures optimal light distribution
- Daylight color, up to 2100lx illuminance
- Meets IP66/67/69K standards
- Designed to operate in temperatures from -40 to +60°C [-40 to +140°F]
- Three lengths available – 200, 300, and 600mm [7.9, 11.8, and 23.6 inches]
- Can be daisy-chained using M12 connectors
- Constructed of tempered glass and aluminum



CLK3CL-24AG-CD

LED Light Bars - CLK Series							
Part Number	Price	Drawing Link	Description	Light Color	Body Material	Length (mm [in])	Cable Length
CLK3C-24AG-CD	\$226.00	PDF	LED light bar, bracket mount, 4-pin M12 quick-disconnect connector. Mounting bracket included.	Daylight white	Aluminum	300 [11.8]	N/A
CLK6C-24AG-CD	\$385.00	PDF				600 [23.6]	
CLK3CL-24AG-CD	\$277.00	PDF	LED light bar, bracket mount. 4-pin M12 female and 4-pin M12 male connectors. Mounting bracket included.	Daylight white	Aluminum	300 [11.8]	
CLK6CL-24AG-CD	\$436.00	PDF				600 [23.6]	

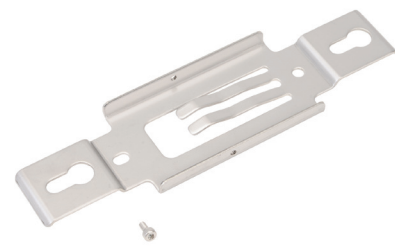
Accessories - CLK Series			
Part Number	Price	Drawing Link	Description
CLK-001	\$20.00	PDF	Replacement rear bracket (aluminum) for CLK series light bars.
SZ-320KS	\$28.50	PDF	Adjustable angle wall bracket (aluminum) for CLK series light bars.
L85130002-F1	\$20.00	N/A	Sliding bracket for CLK series light bars.



CLK-001



SZ-320KS



L85130002-F1

PATLITE® LED Light Bars - CLK Series

Specifications

LED Light Bars - CLK Series Technical Specifications					
Part Number		CLK3C-24AG-CD	CLK6C-24AG-CD	CLK3CL-24AG-CD	CLK6CL-24AG-CD
Luminous Color		Daylight white			
Color Temperature		6500K			
Illuminance (@24VDC)	1.0 m	1200lx	2100lx	1200lx	2100lx
	2.0 m	300lx	580lx	300lx	580lx
Luminous Flux		1300lm	2600lm	1300lm	2600lm
Rated Voltage		24VDC (polarized)			
Operating Voltage Range		24VDC ± 10%			
Rated Current Consumption		522mA ± 10%	1044mA ± 10%	522mA ± 10%	1044mA ± 10%
Rated Power Consumption		12.5 W	25W	12.5 W	25W
Operating Ambient Temperature		-40 to +60°C [-40 to +140°F]			
Operating Ambient Humidity		Less than 90% (no condensation)			
Mounting Location		Indoors			
Mounting Direction		All directions			
Protection Rating		IP66/67 (JIS C0920) / 69K (DIN 40050 part 9)			
Insulation Resistance		More than 5MΩ at 500VDC between terminals and chassis			
Withstanding Voltage		500VAC applied for 1 minute between terminals and chassis			
Vibration Resistance		19.6 m/s ² (JIS C 0911-1984)			
Weight (g [oz])		600 [21.2]	1070 [37.7]	600 [21.2]	1070 [37.7]
Agency Approvals *		UL 2108, CSA-C22.2 No. 250.0 EMC Directive (EN 55015, EN 61000-6-2) RoHS Directive (EN 50581) Conforms to CE requirements UL Recognized (E306141)			

* To obtain the most current agency approval information, see the Agency Approval Checklist section on the specific part number's web page.

PATLITE® LED Light Bars - CWF Series

Features

- Both AC and DC versions available
- Daylight color, up to 445lx illuminance
- Includes on/off switch for light control
- Meets IP20 standards
- AC versions designed to operate in temperatures from -20 to +50°C [-4 to +122°F]
- DC versions designed to operate in temperatures from -25 to +60°C [-13 to +140°F]
- Three lengths available – 300, 600, and 900mm [11.8, 23.6, and 35.4 inches]
- Constructed of polycarbonate and aluminum



CWF3S-M2U-CD

LED Light Bars - CWF Series							
Part Number	Price	Drawing Link	Description	Light Color	Body Material	Length (mm [in])	Cable Length m [ft]
CWF3S-M2U-CD	\$96.00	PDF	LED light bar with on/off switch, bracket mount, pigtail connector, AC input. Mounting bracket included.	Daylight white	Polycarbonate/ Aluminum	300 [11.8]	3 [9.8]
CWF6S-M2U-CD	\$144.00	PDF				600 [23.6]	
CWF9S-M2U-CD	\$166.00	PDF				900 [35.4]	
CWF3S-24-CD	\$84.00	PDF	LED light bar with on/off switch, bracket mount, pigtail connector, DC input. Mounting bracket included.	300 [11.8]			
CWF6S-24-CD	\$106.00	PDF		600 [23.6]			

Accessories - CWF Series			
Part Number	Price	Drawing Link	Description
CWF-001	\$11.00	PDF	Swivel bracket (aluminum) for CWF series light bars
CWF-002	\$11.00	PDF	Magnet for CWF series light bars
ZM0000028-F1	\$20.00	N/A	Replacement rear bracket (nickel plated steel) for CWF series light bars



CWF-001



CWF-002



ZM0000028-F1

PATLITE® LED Light Bars - CWF Series

Specifications

LED Light Bars - CWF Series Technical Specifications						
Model	CWF3S-M2U-CD	CWF6S-M2U-CD	CWF9S-M2U-CD	CWF3S-24-CD	CWF6S-24-CD	
Luminous Color	Daylight white					
Color Temperature	5700K					
Illuminance (@24VDC)	1.0 m	150lx	320lx	445lx	165lx	320lx
Luminous Flux	500lm	1000lm	1500lm	500lm	1000lm	
Rated Voltage	100-240VAC (50/60Hz)			24VDC (polarized)		
Operating Voltage Range	100-240VAC ± 10%			24VDC ± 10%		
Rated Current Consumption	0.06 A	0.13 A	0.17 A	-	-	
Rated Power Consumption	5W	10W	15W	5W	10W	
Operating Ambient Temperature	-20°C to +50°C [-4°F to +122°F]			-25°C to +60°C [-13°F to +140°F]		
Operating Ambient Humidity	Less than 90% (no condensation)					
Mounting Location	Indoors					
Mounting Direction	All directions					
Protection Rating	IP20					
Insulation Resistance	More than 5MΩ at 500VDC between live part and non-current carrying metallic part					
Withstanding Voltage	1500VAC applied for 1 minute between live part and non-current carrying metallic part			500VAC applied for 1 minute between live part and non-current carrying metallic part		
Weight (g [oz])	530 [18.7]	680 [24.0]	840 [29.6]	420 [14.8]	570 [20.1]	
Agency Approvals *	UL 1598, CSA C22.2 No. 250.0 FCC Part 15 Subpart B Class A			UL 1598, CSA C22.2 No. 250.0 EMC Directive (EN 61000-6-4, EN 61000-6-2) FCC Part 15 Subpart B Class A		

* To obtain the most current agency approval information, see the Agency Approval Checklist section on the specific part number's web page.

PATLITE® Signal Towers - HSST Series

Features

- Low-cost kit for controlling LR5 signal tower manually
- Three-tier light with red, amber, and green light modules
- Includes 3-button switch box and power adapter
- Tower meets IP54 standards
- Designed to operate in temperatures from 0 to +40°C [+32 to +104°F]
- Tower is 219mm [8.6 in] long with 50mm [2.0 in] diameter lights



LR5-E-RZ



HSST-3M2-RYG

Signal Towers - HSST Series								
Part Number	Price	Drawing Link	Description	Light Color	Lens Color	Body Color	Light Tower Length mm [in]	Diameter
<u>HSST-3M2-RYG</u>	\$211.00	PDF	Manual signal tower station kit, 3 tiers, permanent LED light function.	Red, Amber, Green	Clear	Off-white	219 [8.6]	50mm

Accessories - HSST Series		
Part Number	Price	Description
<u>LR5-E-RZ</u>	\$20.00	Patlite LED light element, 50mm diameter, red, permanent or flashing (60 fpm +/- 3 fpm) light function, 24 VDC, clear lens. For use with HSST series manual signal tower station kit.
<u>LR5-E-YZ</u>	\$20.00	Patlite LED light element, 50mm diameter, yellow, permanent or flashing (60 fpm +/- 3 fpm) light function, 24 VDC, clear lens. For use with HSST series manual signal tower station kit.
<u>LR5-E-GZ</u>	\$26.50	Patlite LED light element, 50mm diameter, green, permanent or flashing (60 fpm +/- 3 fpm) light function, 24 VDC, clear lens. For use with HSST series manual signal tower station kit.
<u>B32310071-7F1</u>	\$8.75	Patlite head cover, off-white, ABS plastic. For use with HSST series manual signal tower station kit.
<u>T16000002-F1</u>	\$76.00	Patlite 3-button switch box, off-white, ABS plastic. For use with HSST series manual signal tower station kit.
<u>T13300128-F1</u>	\$53.00	Patlite power supply, for use with HSST series manual signal tower station kit.



B32310071-7F1



T16000002-F1



T13300128-F1

PATLITE® Signal Towers - HSST Series

Specifications

Signal Towers - HSST Series Specifications		
Part Number	HSST-3M2-RYG	
Rated Voltage	AC adapter input: 100-240VAC (50/60Hz) Output: 24VDC	
Operating Voltage Range	100-240VAC \pm 10%	
Rated Power Consumption (Max)	4W	
Operating Ambient Temperature	0 to +40°C [+32 to +104°F]	
Operating Ambient Humidity	Less than 90% (no condensation)	
Mounting Location	Indoors	
Mounting Direction	Upright (recommended)	
Protection Rating	Switch Box: IP20 Signal Tower: IP54	
Insulation Resistance	More than 5M Ω at 500VDC between power input lead and chassis	
Withstanding Voltage	1500VAC applied for 1 minute between live part and non-current carrying metallic part	
Weight (g [oz])	Signal Tower (Short Pole)	360 [12.7]
	Signal Tower (Long Pole)	470 [16.6]
	Bracket	330 [11.6]
	Switch Box	70 [2.5]
	AC Adapter	140 [4.9]
	Fitting Plate	50 [1.8]
Agency Approvals *	RoHS Directive (EN 50581) FCC Part 15 Subpart B Class A UL 48, CSA C22.2 No. 207 UL Listed (File E310210)	

* To obtain the most current agency approval information, see the Agency Approval Checklist section on the specific part number's web page.