



aerospace  
climate control  
electromechanical  
filtration  
fluid & gas handling  
hydraulics  
**pneumatics**  
process control  
sealing & shielding



# P3L Lite Series Air Preparation System

A complete air preparation system

Catalogue PDE2661TCUK January 2012



ENGINEERING YOUR SUCCESS.

Features .....	3 - 4
Popular Combinations .....	5
Modular Connector Kit Assembly .....	5
P3L Lite Particulate Filter .....	6 - 7
P3L Lite Coalescing and Adsorber Filters .....	8 - 9
P3L Lite Regulator .....	10 - 11
P3L Lite Regulator - Brass .....	12 - 13
P3L Lite Filter/Regulator .....	14 - 15
P3L Lite Lubricator .....	16 - 17
Accessories Kits .....	18



**WARNING**

FAILURE OR IMPROPER SELECTION OR IMPROPER USE OF THE PRODUCTS AND/OR SYSTEMS DESCRIBED HEREIN OR RELATED ITEMS CAN CAUSE DEATH, PERSONAL INJURY AND PROPERTY DAMAGE.

This document and other information from Parker Hannifin Corporation, its subsidiaries and authorized distributors provide product and/or system options for further investigation by users having technical expertise. It is important that you analyze all aspects of your application and review the information concerning the product or system in the current product catalog. Due to the variety of operating conditions and applications for these products or systems, the user, through its own analysis and testing, is solely responsible for making the final selection of the products and systems and assuring that all performance, safety and warning requirements of the application are met. The products described herein, including without limitation, product features, specifications, designs, availability and pricing, are subject to change by Parker Hannifin Corporation and its subsidiaries at any time without notice.

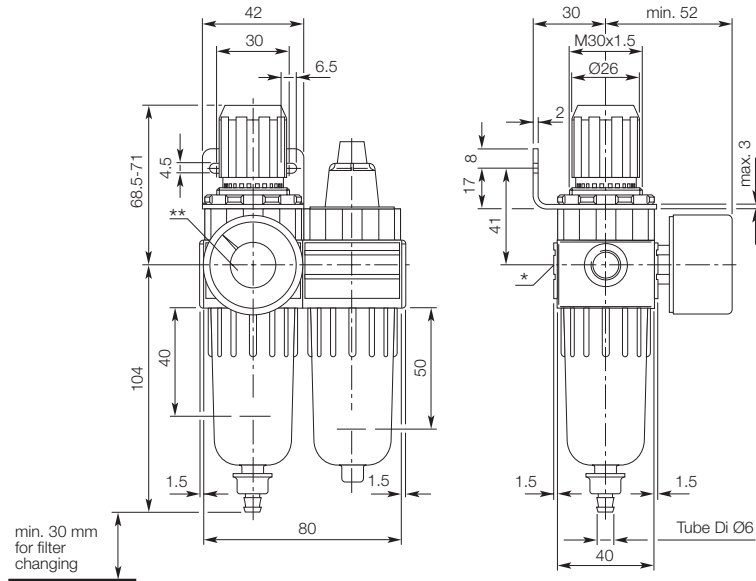
**SALE CONDITIONS**

The items described in this document are available for sale by Parker Hannifin Corporation, its subsidiaries or its authorized distributors. Any sale contract entered into by Parker will be governed by the provisions stated in Parker's standard terms and conditions of sale (copy available upon request).





**Popular Combinations :** Inlet pressure 10 bar, Secondary pressure 6.3 bar, 1 bar pressure drop.



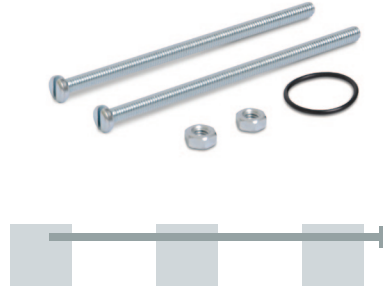
\* On delivery the screw plug is not assembled  
 \*\* Two opposite gauge ports NPT 1/8

**Filter Regulator + Lubricator Combination -**

Polycarbonate bowl, 5 micron, 8-bar with Gauge, Wall mounting Bracket.

Port size	Flow dm <sup>3</sup> /s (scfm)	Manual Push Drain	Weight	Semi-Auto Drain	Weight
1/4"	9.7 (20.6)	<b>P3LCA12PEPGLNW</b>	0.32 kg (70 lbs)	<b>P3LCA12PESGLNW</b>	0.32 kg (70 lbs)

**Modular Connector Kit Assembly**



**P31KA00CB1**  
 Connects product  
 (E/R + F/L)

**P31KA00CB2**  
 Connects product  
 (E/R + M + F/L)

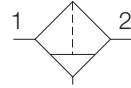
**P31KA00CB3**  
 (E/R + F + F)

**P31KA00CB4**  
 Connects product  
 (F + L)

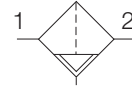
**P3L Lite Particulate Filter**



**Symbols**



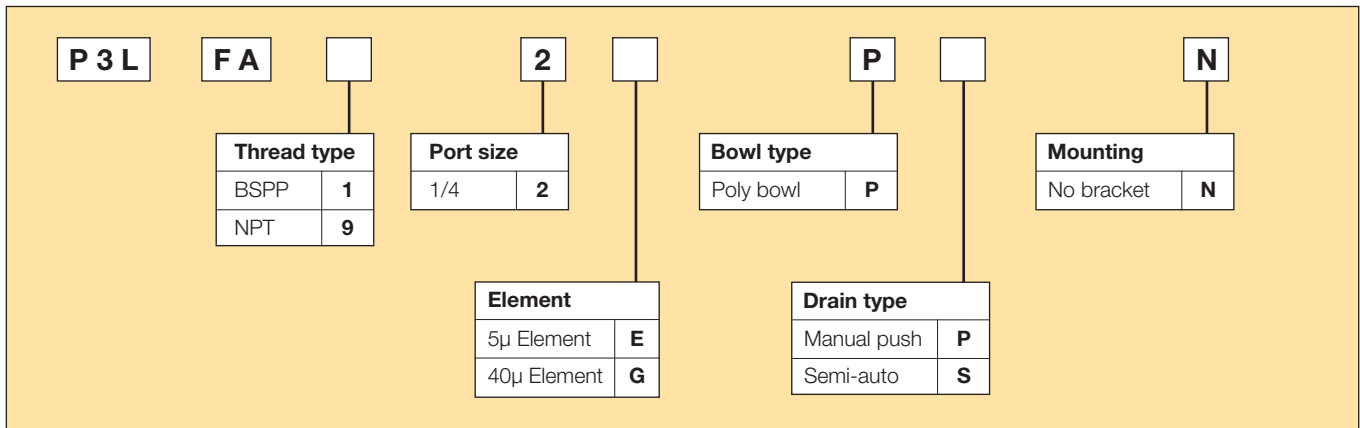
Manual drain



Semi-auto drain

- Integral 1/4 ports (BSPP & NPT)
- High efficiency 5 micron element as standard
- Excellent water removal efficiency
- Robust but lightweight construction
- One hand operation for easy element cartridge removal

**Options:**



Port size	Description	Order Code	Flow dm <sup>3</sup> /s * (scfm) *	Max bar (psi)	Height mm (Inches)	Width mm (Inches)	Depth mm (Inches)
1/4"	Poly bowl - Manual drain - 5µ	<b>P3LFA12EPPN</b>	30.5 (65)	10 (150)	115 (4.52)	40 (1.58)	40 (1.58)
1/4"	Poly bowl - Pulse drain - 5µ	<b>P3LFA12EPSN</b>	30.5 (65)	10 (150)	115 (4.52)	40 (1.58)	40 (1.58)
1/4"	Metal bowl - Manual drain - 40µ	<b>P3LFA12GPPN</b>	30.5 (65)	10 (150)	115 (4.52)	40 (1.58)	40 (1.58)
1/4"	Metal bowl - Pulse drain - 40µ	<b>P3LFA12GPSN</b>	30.5 (65)	10 (150)	115 (4.52)	40 (1.58)	40 (1.58)

\* flow with 6.3 bar (91.3 psig) inlet pressure and 0.5 (7.2 psig) pressure drop.

**Specifications**

Flow Capacity	1/4	30.5 dm <sup>3</sup> /s (65 scfm)
Operating Temperature	0°C (32°F) to 50°C (122°F)	
Max Supply Pressure	10 bar (150 psi)	
Standard Filtration	5 Micron	
Useful Retention	12 cm <sup>3</sup> (0.4 US oz.)	
Port Size	BSP / NPT	1/4
Weight	0.11 kg (0.24 lbs)	

\* Inlet pressure 6.3 bar (91.3 psig). Pressure drop 0.5 bar (7.2 psig).

**Air quality:**

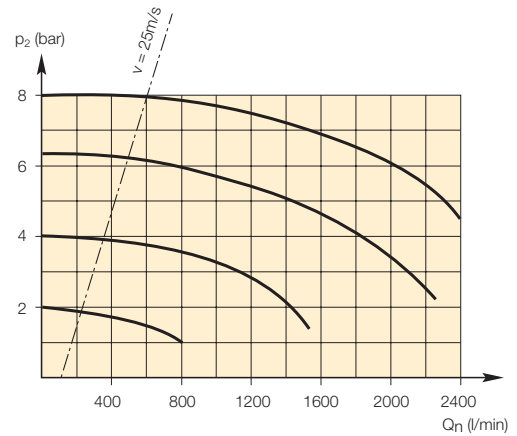
Within ISO 8573-1: 1991 Class 3 (Particulates)  
 Within ISO 8573-1: 2001 Class 6 (Particulates)

**Materials of Construction**

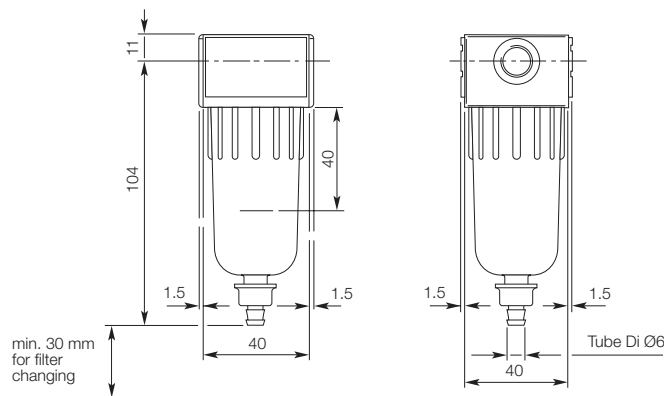
Body	
Body Cap	
Bowl	Polycarbonate
Element Retainer	Acetal
Baffle	Acetal
Filter Element	Sintered Polyethylene
Seals	Nitrile

**Flow Charts**

**1/4 Filter**



**Dimensions**



**Repair and Service Kits**

Plastic bowl / semi-auto drain	<b>P3LKA00BPS</b>
5µ particle filter element	<b>P3LKA00ESE</b>
40µ particle filter element	<b>P3LKA00ESG</b>
Individual mounting bracket - P3LFA / P3LLA	<b>P3LKA00MW</b>

**P3L Lite Coalescing and Adsorber Filters**

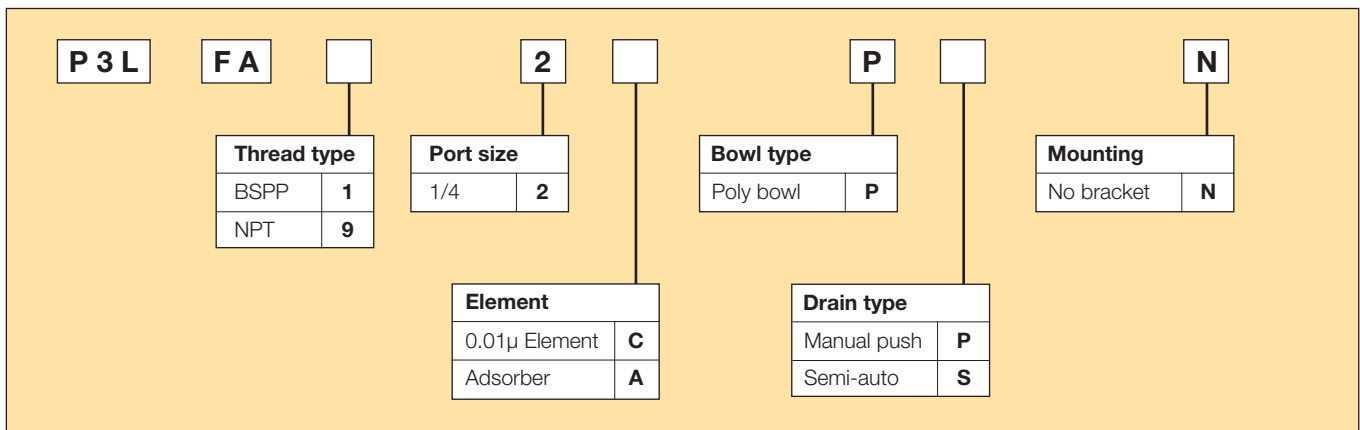


- Integral 1/4 ports (BSPP & NPT)
- Removes liquid aerosols and sub micron particles
- Oil free air for critical applications, such as air gauging, pneumatic instrumentation and control
- Adsorbing activated carbon element removes oil vapours and most hydrocarbons

**Note:** To optimise the life of coalescing element, it is advisable to install a P3LF pre-filter with a 5 micron element upstream of the coalescing filter.

To optimise the life of an Adsorber it is advisable to install a P3L Coalescing Filter upstream of the Adsorber. Adsorber element should be replaced approx. every 1000 hours of service

**Options:**



Port size	Description	Order Code	Flow dm <sup>3</sup> /s (scfm)	Max bar (psi)	Height mm (Inches)	Width mm (Inches)	Depth mm (Inches)
1/4"	Poly bowl - 0.01 micron - Manual drain	<b>P3LFA12CPPN</b>	5.8 (12.3)	10 (150)	115 (4.52)	40 (1.58)	40 (1.58)
1/4"	Poly bowl - 0.01 micron - Pulse drain	<b>P3LFA12CPSN</b>	5.8 (12.3)	10 (150)	115 (4.52)	40 (1.58)	40 (1.58)
1/4"	Poly bowl - Adsorber	<b>P3LFA12APPN</b>	5.8 (12.3)	10 (150)	115 (4.52)	40 (1.58)	40 (1.58)

\* flow with 6.3 bar (91.3 psig) inlet pressure and 0.2 bar (3 psig) pressure drop.

**Specifications**

Flow Capacity	5.8 dm <sup>3</sup> /s (12.3 SCFM)	
0.01 Micron Coalescing	Energy Efficient Flow*	( )
	Maximum Flow**	( )
Activated Carbon Adsorber	Rated Flow*	( )
Operating Temperature	0°C (32°F) to 50°C (122°F)	
Max Supply Pressure	10 bar (150 psi)	
Standard Filtration**	0.01 Micron ppm wt	
Adsorber	Max oil carryover (ppm w/w) 0.003 @ 21°C (70°F)	
Useful Retention	12 cm <sup>3</sup> (0.4 US oz.)	
Port Size	BSPP / NPT	1/4
Weight	11kg (24 lbs)	

\* Inlet pressure 6.3 bar (90 psi), Pressure drop 0.2 bar (3 psig), Saturated Element.

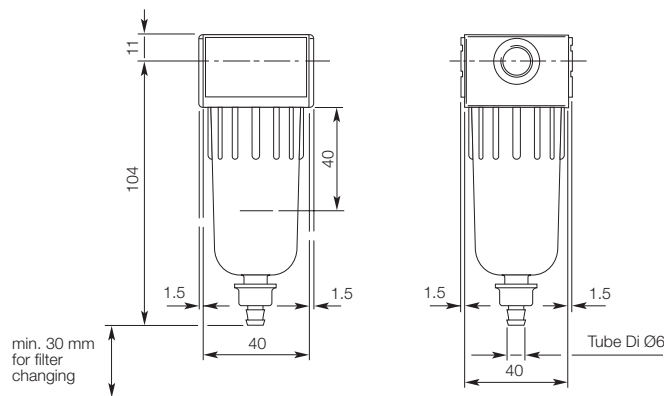
\*\* Inlet pressure 6.3 bar (90 psi), Pressure drop 0.4 bar (6 psig), Saturated Element.

† Useful retention refers to volume below the quiet zone baffle.

**Materials of Construction**

Body		
Body Cap	ABS	
Bowl	Polycarbonate	
Filter Element	0.01 Micron	Borosilicate Cloth
Adsorber	Activated Carbon	
Seals	Nitrile	

**Dimensions**



**Flow Charts**

**P3L - 0.01 micron flow**

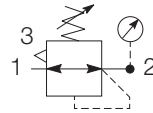
**Repair and Service Kits**

Plastic bowl / manual push drain	<b>P3LKA00BPP</b>
Plastic bowl / semi-auto drain	<b>P3LKA00BPS</b>
0.01µ coalescing filter element	<b>P3LKA00ESC</b>
Activated carbon adsorber filter element	<b>P3LKA00ESA</b>
Individual mounting bracket - P3LFA / P3LLA	<b>P3LKA00MW</b>

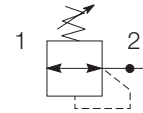
**P3L Lite Regulator**



**Symbols**



Self relieving regulator with gauge



Non relieving regulator

- Integral 1/4 ports (BSPP & NPT)
- Robust but lightweight construction
- Secondary pressure ranges 2, 4 & 8 bar
- Secondary aspiration plus balanced poppet provides quick response and accurate pressure regulation.
- Relieving & Non-relieving types
- Non-rising knob

**Options:**

<b>P 3 L</b>	<b>R A</b>	<b>2</b>	<b>N</b>	<b>N</b>																																				
	<table border="1" style="width: 100%; border-collapse: collapse;"> <tr><th colspan="2">Thread type</th></tr> <tr><td>BSPP</td><td style="text-align: center;"><b>1</b></td></tr> <tr><td>NPT</td><td style="text-align: center;"><b>9</b></td></tr> </table>	Thread type		BSPP	<b>1</b>	NPT	<b>9</b>	<table border="1" style="width: 100%; border-collapse: collapse;"> <tr><th colspan="2">Port size</th></tr> <tr><td>1/4</td><td style="text-align: center;"><b>2</b></td></tr> </table>	Port size		1/4	<b>2</b>	<table border="1" style="width: 100%; border-collapse: collapse;"> <tr><th colspan="2">Relief</th></tr> <tr><td>Relieving</td><td style="text-align: center;"><b>B</b></td></tr> <tr><td>Non relieving</td><td style="text-align: center;"><b>N</b></td></tr> </table>	Relief		Relieving	<b>B</b>	Non relieving	<b>N</b>	<table border="1" style="width: 100%; border-collapse: collapse;"> <tr><th colspan="4">Adjustment range</th></tr> <tr><th colspan="2">With round gauge</th><th colspan="2">Without gauge</th></tr> <tr><td>2 bar</td><td style="text-align: center;"><b>Z</b></td><td>2 bar</td><td style="text-align: center;"><b>Y</b></td></tr> <tr><td>4 bar</td><td style="text-align: center;"><b>M</b></td><td>4 bar</td><td style="text-align: center;"><b>L</b></td></tr> <tr><td>8 bar</td><td style="text-align: center;"><b>G</b></td><td>8 bar</td><td style="text-align: center;"><b>N</b></td></tr> </table>	Adjustment range				With round gauge		Without gauge		2 bar	<b>Z</b>	2 bar	<b>Y</b>	4 bar	<b>M</b>	4 bar	<b>L</b>	8 bar	<b>G</b>	8 bar	<b>N</b>
Thread type																																								
BSPP	<b>1</b>																																							
NPT	<b>9</b>																																							
Port size																																								
1/4	<b>2</b>																																							
Relief																																								
Relieving	<b>B</b>																																							
Non relieving	<b>N</b>																																							
Adjustment range																																								
With round gauge		Without gauge																																						
2 bar	<b>Z</b>	2 bar	<b>Y</b>																																					
4 bar	<b>M</b>	4 bar	<b>L</b>																																					
8 bar	<b>G</b>	8 bar	<b>N</b>																																					
				<table border="1" style="width: 100%; border-collapse: collapse;"> <tr><th colspan="2">Mounting</th></tr> <tr><td>Plastic panel mount nut</td><td style="text-align: center;"><b>P</b></td></tr> </table>	Mounting		Plastic panel mount nut	<b>P</b>																																
Mounting																																								
Plastic panel mount nut	<b>P</b>																																							

Port size	Description	Order Code	Flow dm <sup>3</sup> /s (scfm) *	Max bar (psi)	Height mm (Inches)	Width mm (Inches)	Depth mm (Inches)
1/4"	8 bar relieving	<b>P3LRA12BNNP</b>	12.8 (27)	10 (150)	88 (3.46)	40 (1.57)	40 (1.57)
1/4"	8 bar relieving + gauge	<b>P3LRA12BNGP</b>	12.8 (27)	10 (150)	88 (3.46)	40 (1.57)	72 (2.83)

\* flow with 10 bar (145 psig) inlet pressure, 6.3 bar (91.3 psig) set pressure and 1 bar (14.5 psig) pressure drop.

**Specifications**

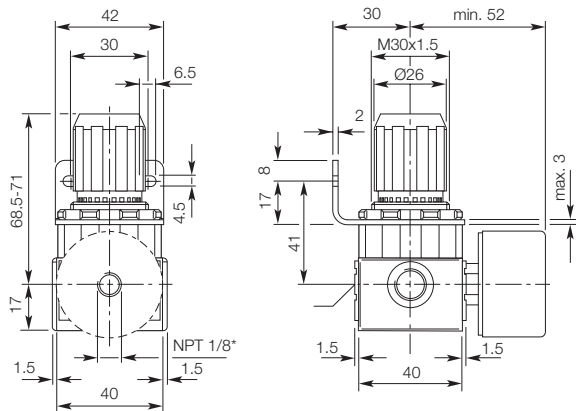
Flow Capacity*	1/4	12.8 dm <sup>3</sup> /s (27 scfm)
Operating Temperature	0°C (32°F) to 50°C (122°F)	
Max Supply Pressure	10 bar (150 psi)	
Adjusting Range Pressure	0-2 bar (30 psi) 0-4 bar (60 psi) 0-8 bar (125 psi)	
Port Size	BSPP / NPT	1/4
Gauge Port (2 ea.)	BSPP / NPT	1/8
Weight	0.11 kg (24 lbs)	

\* Inlet pressure 10 bar. Secondary pressure 6.3 bar.

**Materials of Construction**

Body	
Adjustment Knob	Acetal
Body Cap	ABS
Bonnet	PBT
Diaphragm Assembly	Brass / Nitrile
Bottom Plug	33% Glass-Filled Nylon
Valve Assembly	Brass / Nitrile
Springs	Steel
Seals	Nitrile
Panel Nut	Acetal

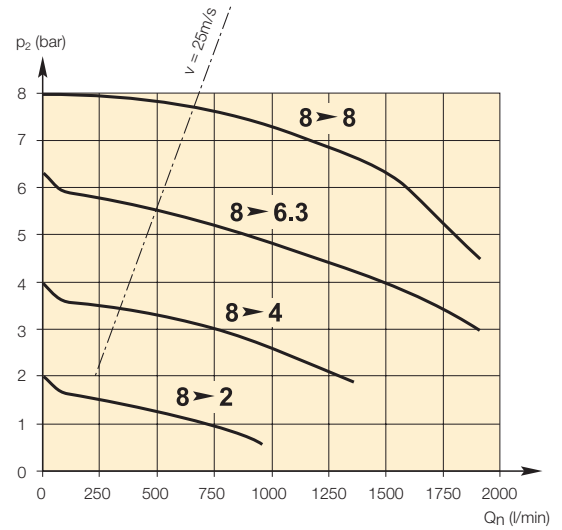
**Dimensions**



\* Two opposite gauge ports NPT 1/8

**Flow Charts**

**1/4 Regulator**



**Repair and Service Kits**

Panel mount nut - Aluminium	<b>P3LKA00MM</b>
Panel mount nut - Plastic	<b>P3LKA00MP</b>
Angle Bracket (uses panel mount threads)	<b>P3LKA00MR</b>

**Gauges**

**40mm (1 1/2") Round 1/8" center back mount**

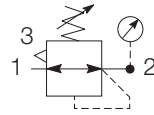
for units ordered without square gauge

0-30 PSIG / 0-2 bar	<b>KZ8810</b>
0-58 PSIG / 0-4 bar	<b>KZ8811</b>
0-160 PSIG / 0-10 bar	<b>KZ8813</b>

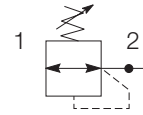
**P3L Lite Regulator - Brass**



**Symbols**



Self relieving regulator with gauge



Non relieving regulator

- Integral 1/4 ports (BSPP & NPT)
- Robust brass construction
- Secondary pressure ranges 2, 4 & 8 bar
- Secondary aspiration plus balanced poppet provides quick response and accurate pressure regulation.
- Relieving & Non-relieving types
- Non-rising knob

**Options:**

<b>P 3 L</b>	<b>R X</b>		<b>2</b>		<b>N</b>		<b>N</b>
	<b>Thread type</b>		<b>Port size</b>			<b>Mounting</b>	
	BSPP <b>1</b>		1/4 <b>2</b>			Plastic panel mount nut <b>P</b>	
	NPT <b>9</b>						
			<b>Relief</b>		<b>Adjustment range</b>		
			Relieving <b>B</b>		<b>With round gauge</b>	<b>Without gauge</b>	
			Non relieving <b>N</b>		2 bar <b>Z</b>	2 bar <b>Y</b>	
					4 bar <b>M</b>	4 bar <b>L</b>	
					8 bar <b>G</b>	8 bar <b>N</b>	

Port size	Description	Order Code	Flow dm <sup>3</sup> /s *	(scfm) *	Max bar (psi)	Height mm (Inches)	Width mm (Inches)	Depth mm (Inches)
1/4"	8 bar relieving	<b>P3LRX12BNNP</b>	-	-	10 (150)	-	-	-
1/4"	8 bar relieving + gauge	<b>P3LRX12BNGP</b>	-	-	10 (150)	-	-	-

\* flow with 10 bar (145 psig) inlet pressure, 6.3 bar (91.3 psig) set pressure and 1 bar (14.5 psig) pressure drop.

**Specifications**

Flow Capacity*	1/4	dm <sup>3</sup> /s ( scfm)
Operating Temperature	-	°C (- °F) to °C ( °F)
Max Supply Pressure		10 bar (150 psi)
Adjusting Range Pressure		0-2 bar (30 psi) 0-4 bar (60 psi) 0-8 bar (125 psi)
Port Size	BSPP / NPT	1/4
Gauge Port (2 ea.)	BSPP / NPT	1/8
Weight		0.17 kg (0.37 lbs)

\* Inlet pressure 10 bar. Secondary pressure 6.3 bar.

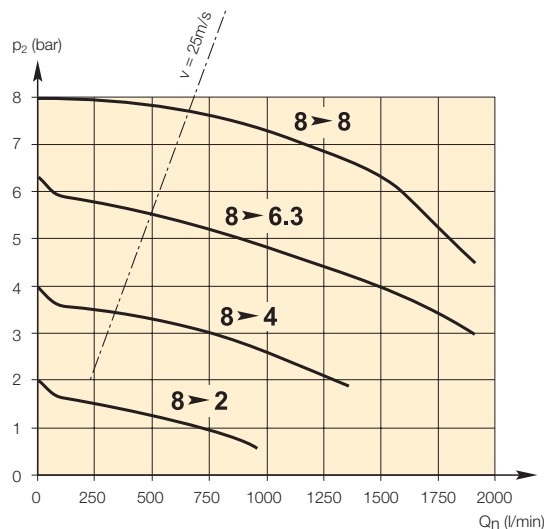
**Materials of Construction**

Body	
Adjustment Knob	Acetal
Body Cap	ABS
Bonnet	PBT
Diaphragm Assembly	Brass / Nitrile
Bottom Plug	33% Glass-Filled Nylon
Valve Assembly	Brass / Nitrile
Springs	Steel
Seals	Nitrile
Panel Nut	Acetal

**Dimensions**

**Flow Charts**

**1/4 Regulator - Brass**



**Repair and Service Kits**

Panel mount nut - Aluminium	<b>P3LKA00MM</b>
Panel mount nut - Plastic	<b>P3LKA00MP</b>
Angle Bracket (uses panel mount threads)	<b>P3LKA00MR</b>

**Gauges**

**40mm (1 1/2") Round 1/8" center back mount**

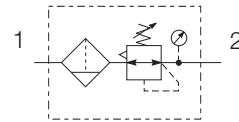
for units ordered without square gauge

0-30 PSIG / 0-2 bar	<b>KZ8810</b>
0-58 PSIG / 0-4 bar	<b>KZ8811</b>
0-160 PSIG / 0-10 bar	<b>KZ8813</b>

**P3L Lite Filter / Regulator**



**Symbols**



- Integral 1/4 ports (BSPP & NPT)
- High efficiency 5 micron element as standard
- Excellent water removal efficiency
- Robust but lightweight construction
- Secondary pressure ranges 2, 4 & 8 bar
- Secondary aspiration plus balanced poppet provides quick response and accurate pressure regulation.

**Options:**

<b>P 3 L</b>	<b>EA</b>		<b>2</b>		<b>P</b>			<b>N</b>		<b>P</b>
<b>Thread type</b>		<b>Drain type</b>		<b>Relief</b>		<b>Adjustment range</b>				
BSPP <b>1</b>		Manual push <b>P</b>		Relieving <b>B</b>		<b>With round gauge</b>		<b>Without gauge</b>		
NPT <b>9</b>		Semi-auto <b>S</b>		Non relieving <b>N</b>		2 bar <b>Z</b>	2 bar <b>Y</b>			
<b>Port size</b>		<b>Element</b>		<b>Mounting</b>		4 bar <b>M</b>	4 bar <b>L</b>			
1/4 <b>2</b>		5µ Element <b>E</b>		Plastic panel mount nut <b>P</b>		8 bar <b>G</b>	8 bar <b>N</b>			
<b>Bowl type</b>		<b>Adjustment range</b>								
Poly bowl <b>P</b>										

Port size	Description	Order Code	Flow dm <sup>3</sup> /s (scfm)	Max bar (psi)	Height mm (Inches)	Width mm (Inches)	Depth mm (Inches)
1/4"	8 bar Relieving - Poly bowl - Manual drain	<b>P3LEA12EPPBNNP</b>	9.2 (19.5)	10 (150)	175 (6.89)	40 (1.57)	40 (1.57)
1/4"	8 bar Relieving - Poly bowl - Semi-auto drain	<b>P3LEA12EPSBNNP</b>	9.2 (19.5)	10 (150)	175 (6.89)	40 (1.57)	40 (1.57)
1/4"	8 bar Relieving - Poly bowl - Manual drain + Gauge	<b>P3LEA12EPPBNGP</b>	9.2 (19.5)	10 (150)	175 (6.89)	40 (1.57)	72 (2.83)
1/4"	8 bar Relieving - Poly bowl - Semi-auto drain + Gauge	<b>P3LEA12EPSBNGP</b>	9.2 (19.5)	10 (150)	175 (6.89)	40 (1.57)	72 (2.83)

\* flow with 10 bar (145 psig) inlet pressure, 6.3 bar (91.3 psig) set pressure and 1 bar (14.5 psig) pressure drop.

**Specifications**

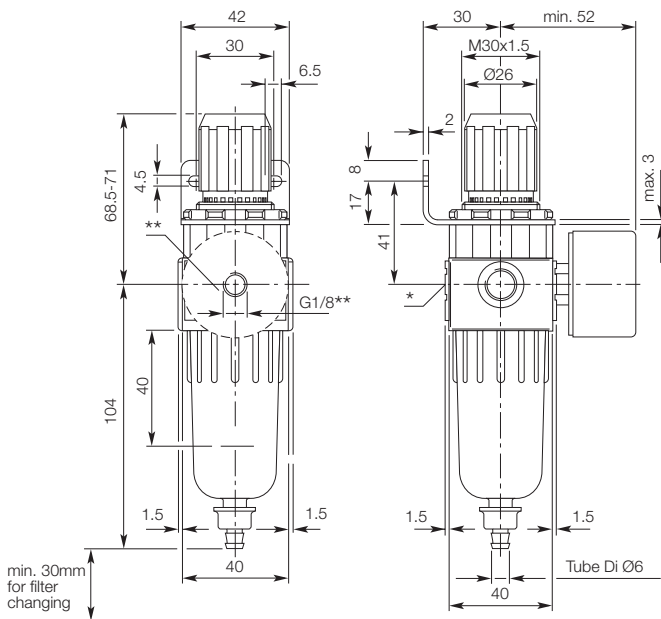
Flow Capacity*	1/4	9.2 dm <sup>3</sup> /s (19.5 scfm)
Operating Temperature	0°C (32°F) to 50°C (122°F)	
Max Supply Pressure	10 bar (150 psi)	
Standard Filtration	5 Micron	
Useful Retention	12 cm <sup>3</sup> (0.4 US oz.)	
Adjusting Range Pressure	0-2 bar (30 psi) 0-4 bar (60 psi) 0-8 bar (125 psi)	
Port Size	BSPP / NPT	1/4
Gauge Port (2 ea.)	BSPP / NPT	1/8
Weight	0.12 kg (26 lbs)	

\* Inlet pressure 10 bar. Secondary pressure 6.3 bar.

**Materials of Construction**

Body	
Adjustment Knob	Acetal
Body Cap	ABS
Bonnet	PBT
Bowl	Polycarbonate
Bowl guard	Nylon
Filter element	Polyethylene
Seals	Nitrile
Springs	Steel
Valve Assembly	Brass / Nitrile
Diaphragm Assembly	Brass / Nitrile
Panel Nut	Acetal

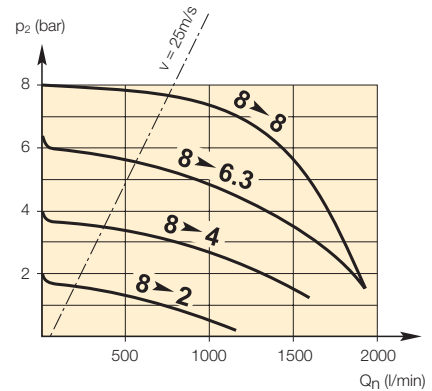
**Dimensions**



\* On delivery the screw plug is not assembled  
 \*\* Two opposite gauge ports NPT 1/8

**Flow Charts**

**1/4 Filter / Regulator**



**Repair and Service Kits**

Plastic bowl / semi-auto drain	<b>P3LKA00BPS</b>
5µ particle filter element	<b>P3LKA00ESE</b>
40µ particle filter element	<b>P3LKA00ESG</b>
Panel mount nut - Aluminium	<b>P3LKA00MM</b>
Panel mount nut - Plastic	<b>P3LKA00MP</b>
Angle Bracket (uses panel mount threads)	<b>P3LKA00MR</b>

**Gauges**

**40mm (1 1/2") Round 1/8" center back mount**

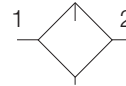
for units ordered without square gauge

0-30 PSIG / 0-2 bar	<b>KZ8810</b>
0-58 PSIG / 0-4 bar	<b>KZ8811</b>
0-160 PSIG / 0-10 bar	<b>KZ8813</b>

P3L Lite Lubricator

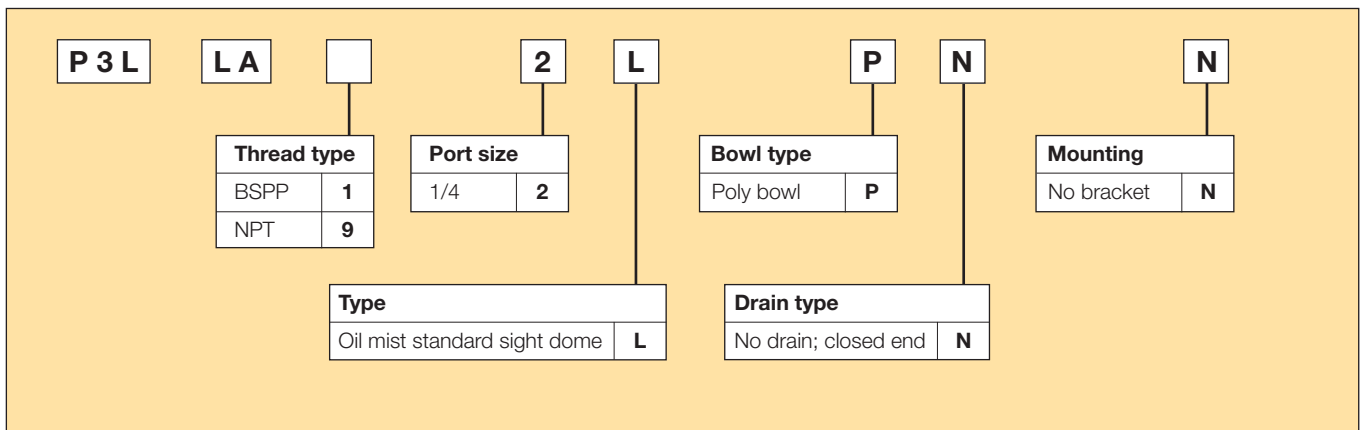


Symbols



- Integral 1/4 ports (BSPP & NPT)
- Robust but lightweight construction
- Proportional oil delivery over a wide range of air flows.
- Finger tip ratchet control for precise oil drip rate adjustment

Options:



Port size	Description	Order Code	Flow dm <sup>3</sup> /s (scfm) *	Max bar (psi)	Height mm (Inches)	Width mm (Inches)	Depth mm (Inches)
1/4"	Poly bowl - No drain	<b>P3LLA12LPNN</b>	23.3 (49)	10 (150)	145 (5.7)	40 (1.57)	40 (1.57)

\* flow with 6.3 bar (91.3 psig) inlet pressure and 0.5 (7.2 psig) pressure drop.

**Specifications**

Flow Capacity*	1/4	23.3 dm <sup>3</sup> /s (49 scfm)
Operating Temperature		0°C (32°F) to 50°C (122°F)
Max Supply Pressure		10 bar (150 psi)
Useful Retention		cm <sup>3</sup> ( US oz.)
Port Size	BSPP / NPT	1/4
Weight		0.09 kg (20 lbs)

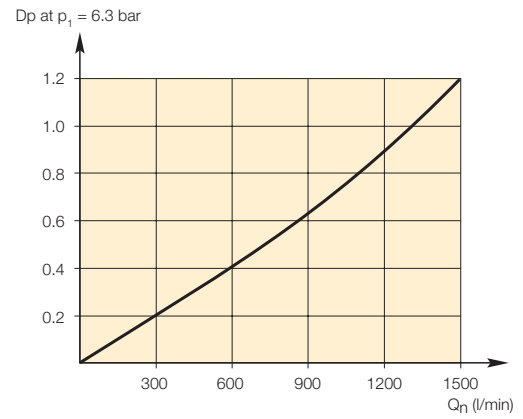
\* Inlet pressure 6.3 bar. Pressure drop 0.5 bar.

**Materials of Construction**

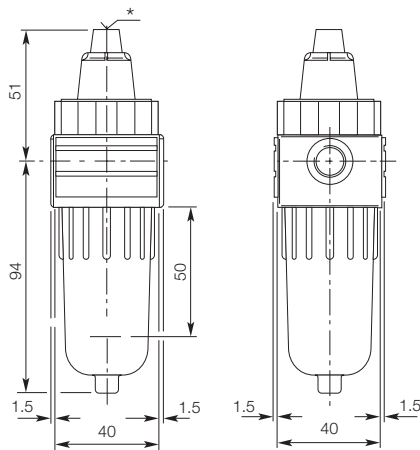
Body	
Body Cap	ABS
Bowl	Polycarbonate
Seals	Nitrile
Sight Dome	Polycarbonate
Suggested Lubricant	ISO / ASTM VG32
Pick-up Filter	Sintered Bronze

**Flow Charts**

**1/4 Lubricator**



**Dimensions**



\* On delivery the scrow plug is not assembled

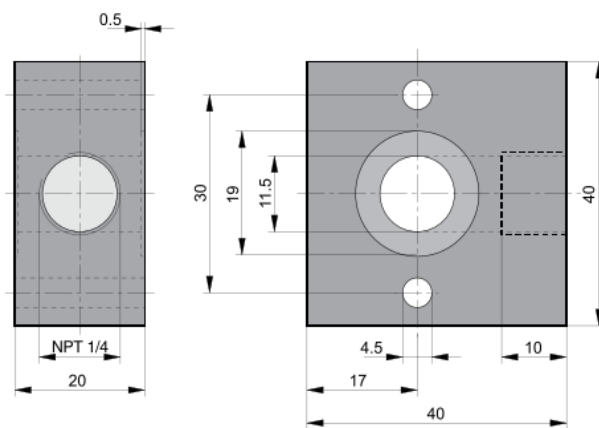
**Repair and Service Kits**

Plastic bowl - no drain	<b>P3LKA00BPN</b>
Lubricator Oil - VG15:ISO 3448 - 100ml	<b>P3XKA00PPA</b>
Lubricator Oil - VG32 - 1 litre	<b>P3YKA00PPBB</b>



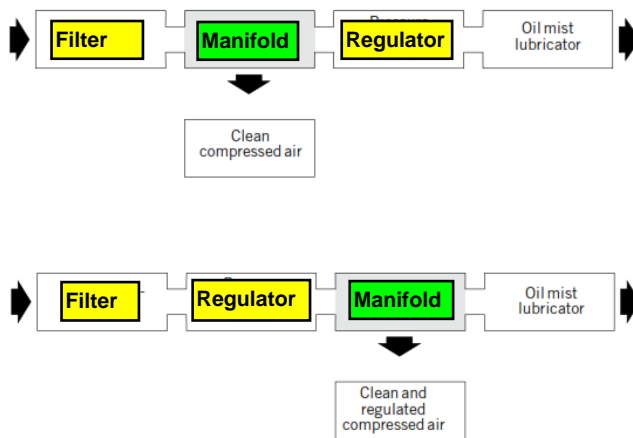
- Features**
- 1/4 ported (BSPP & NPT)
  - 1 take-off 1/4 Top or Bottom
  - Coupling kit supplied with 2 sealing rings.

**Dimensions**



**Material**  
Aluminium - Black anodised

**Installation Instructions**



## Accessories Kits

Description	Order Code	
Panel Mount Nut (Plastic)	P3LKA00MP	
Panel Mount Nut (Aluminium)	P3LKA00MM	
5µ Element Kit	P3LKA00ESE	
40µ Element Kit	P3LKA00ESG	
0.01µ Element Kit	P3LKA00ESC	
Adsorber Element Kit	P3LKA00ESA	
Individual mounting bracket fits - Filter & Lubricator	P3LKA00MW	
Angle mounting bracket fits - Regulator & Filter Regulator	P3LKA00MR	
Gauge 0 - 2 bar Gauge 0 - 4 bar Gauge 0 - 10 bar	KZ8810 KZ8811 KZ8813	
Modular connector kit fits - Regulator or Filter Regulator + Filter or Lubricator Regulator or Filter Regulator + Manifold + Filter or Lubricator Regulator or Filter Regulator + Filter + Filter Filter + Lubricator	P3LKA00CB1 P3LKA00CB2 P3LKA00CB3 P3LKA00CB4	



# Parker Worldwide

## Europe, Middle East, Africa

**AE – United Arab Emirates,** Dubai

Tel: +971 4 8127100  
parker.me@parker.com

**AT – Austria,** Wiener Neustadt

Tel: +43 (0)2622 23501-0  
parker.austria@parker.com

**AT – Eastern Europe,** Wiener Neustadt

Tel: +43 (0)2622 23501 900  
parker.easteurope@parker.com

**AZ – Azerbaijan,** Baku

Tel: +994 50 2233 458  
parker.azerbaijan@parker.com

**BE/LU – Belgium,** Nivelles

Tel: +32 (0)67 280 900  
parker.belgium@parker.com

**BY – Belarus,** Minsk

Tel: +375 17 209 9399  
parker.belarus@parker.com

**CH – Switzerland,** Etoy

Tel: +41 (0)21 821 87 00  
parker.switzerland@parker.com

**CZ – Czech Republic,** Klecany

Tel: +420 284 083 111  
parker.czechrepublic@parker.com

**DE – Germany,** Kaarst

Tel: +49 (0)2131 4016 0  
parker.germany@parker.com

**DK – Denmark,** Ballerup

Tel: +45 43 56 04 00  
parker.denmark@parker.com

**ES – Spain,** Madrid

Tel: +34 902 330 001  
parker.spain@parker.com

**FI – Finland,** Vantaa

Tel: +358 (0)20 753 2500  
parker.finland@parker.com

**FR – France,** Contamine s/Arve

Tel: +33 (0)4 50 25 80 25  
parker.france@parker.com

**GR – Greece,** Athens

Tel: +30 210 933 6450  
parker.greece@parker.com

**HU – Hungary,** Budapest

Tel: +36 1 220 4155  
parker.hungary@parker.com

**IE – Ireland,** Dublin

Tel: +353 (0)1 466 6370  
parker.ireland@parker.com

**IT – Italy,** Corsico (MI)

Tel: +39 02 45 19 21  
parker.italy@parker.com

**KZ – Kazakhstan,** Almaty

Tel: +7 7272 505 800  
parker.easteurope@parker.com

**NL – The Netherlands,** Oldenzaal

Tel: +31 (0)541 585 000  
parker.nl@parker.com

**NO – Norway,** Asker

Tel: +47 66 75 34 00  
parker.norway@parker.com

**PL – Poland,** Warsaw

Tel: +48 (0)22 573 24 00  
parker.poland@parker.com

**PT – Portugal,** Leca da Palmeira

Tel: +351 22 999 7360  
parker.portugal@parker.com

**RO – Romania,** Bucharest

Tel: +40 21 252 1382  
parker.romania@parker.com

**RU – Russia,** Moscow

Tel: +7 495 645-2156  
parker.russia@parker.com

**SE – Sweden,** Spånga

Tel: +46 (0)8 59 79 50 00  
parker.sweden@parker.com

**SK – Slovakia,** Banská Bystrica

Tel: +421 484 162 252  
parker.slovakia@parker.com

**SL – Slovenia,** Novo Mesto

Tel: +386 7 337 6650  
parker.slovenia@parker.com

**TR – Turkey,** Istanbul

Tel: +90 216 4997081  
parker.turkey@parker.com

**UA – Ukraine,** Kiev

Tel: +380 44 494 2731  
parker.ukraine@parker.com

**UK – United Kingdom,** Warwick

Tel: +44 (0)1926 317 878  
parker.uk@parker.com

**ZA – South Africa,** Kempton Park

Tel: +27 (0)11 961 0700  
parker.southafrica@parker.com

## North America

**CA – Canada,** Milton, Ontario

Tel: +1 905 693 3000

**US – USA,** Cleveland

Tel: +1 216 896 3000

## Asia Pacific

**AU – Australia,** Castle Hill

Tel: +61 (0)2-9634 7777

**CN – China,** Shanghai

Tel: +86 21 2899 5000

**HK – Hong Kong**

Tel: +852 2428 8008

**IN – India,** Mumbai

Tel: +91 22 6513 7081-85

**JP – Japan,** Tokyo

Tel: +81 (0)3 6408 3901

**KR – South Korea,** Seoul

Tel: +82 2 559 0400

**MY – Malaysia,** Shah Alam

Tel: +60 3 7849 0800

**NZ – New Zealand,** Mt Wellington

Tel: +64 9 574 1744

**SG – Singapore**

Tel: +65 6887 6300

**TH – Thailand,** Bangkok

Tel: +662 186 7000 99

**TW – Taiwan,** Taipei

Tel: +886 2 2298 8987

## South America

**AR – Argentina,** Buenos Aires

Tel: +54 3327 44 4129

**BR – Brazil,** Sao Jose dos Campos

Tel: +55 800 727 5374

**CL – Chile,** Santiago

Tel: +56 2 623 1216

**MX – Mexico,** Apodaca

Tel: +52 81 8156 6000

European Product Information Centre

Free phone: 00 800 27 27 5374

(from AT, BE, CH, CZ, DE, DK, EE, ES, FI, FR, IE, IL, IS, IT, LU, MT, NL, NO, PL, PT, RU, SE, SK, UK, ZA)

## Parker Hannifin Manufacturing Ltd

Pneumatic Division Europe  
The Collins Centre,  
Lichfield South, Wall Island,  
Birmingham Road, Lichfield.  
WS14 0QP United Kingdom  
Tel.: +44 (0) 1543 483800  
Fax: +44 (0) 1543 483801  
www.parker.com

