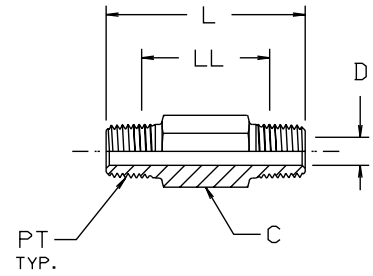


Long Pipe Nipple FFF

Male pipe thread / male pipe thread

All dimensions are in inches



TUBE FITTING PART #	PT PORT THD NPTF	C HEX (inch)	D DRILL (inch)	L (inch)	LL AFTER ASSY (inch)	STANDARD MATERIAL FROM STOCK		
						S	SS	B
1/8 x 1.5 FFF	1/8-27	7/16	0.188	1.5	1.03	•	•	•
1/8 x 2.0 FFF	1/8-27	7/16	0.188	2.0	1.53	•	•	•
1/8 x 2.5 FFF	1/8-27	7/16	0.188	2.5	2.03		•	•
1/8 x 3.0 FFF	1/8-27	7/16	0.188	3.0	2.53		•	•
1/4 x 1.5 FFF	1/4-18	5/8	0.281	1.5	0.82	•	•	•
1/4 x 2.0 FFF	1/4-18	5/8	0.281	2.0	1.32	•	•	•
1/4 x 2.5 FFF	1/4-18	5/8	0.281	2.5	1.82	•	•	•
1/4 x 3.0 FFF	1/4-18	5/8	0.281	3.0	2.32	•	•	•
1/4 x 4.0 FFF	1/4-18	5/8	0.281	4.0	3.32		•	•
3/8 x 2.0 FFF	3/8-18	3/4	0.406	2.0	1.30		•	
3/8 x 3.0 FFF	3/8-18	3/4	0.406	3.0	2.30		•	
3/8 x 3.5 FFF	3/8-18	3/4	0.406	3.5	2.80		•	
3/8 x 4.0 FFF	3/8-18	3/4	0.406	4.0	3.30		•	
1/2 x 2.0 FFF	1/2-14	7/8	0.531	2.0	1.07	•	•	•
1/2 x 2.5 FFF	1/2-14	7/8	0.531	2.5	1.57		•	
1/2 x 3.0 FFF	1/2-14	7/8	0.531	3.0	2.07	•	•	•
1/2 x 4.0 FFF	1/2-14	7/8	0.531	4.0	3.07		•	
1/2 x 6.0 FFF	1/2-14	7/8	0.531	6.0	5.07		•	
3/4 x 3.0 FFF	3/4-14	1 1/8	0.719	3.0	2.04		•	
1 x 3.0 FFF	1-11 1/2	1 3/8	0.938	3.0	1.86		•	

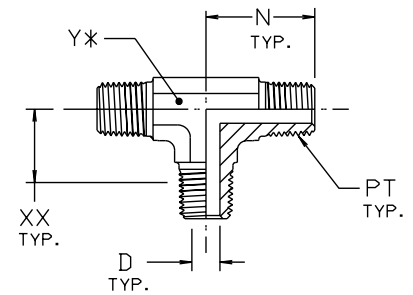


Male Pipe Tee RRS

Male pipe thread (all three ends)

SAE 140437

All dimensions are in inches



*Y—ACROSS WRENCH FLATS

TUBE FITTING PART #	PT PORT THD NPTF	D DRILL (inch)	N (inch)	XX AFTER ASSY (inch)	Y (inch)	STANDARD MATERIAL FROM STOCK		
						S	SS	B
1/8 RRS	1/8-27	0.188	0.78	0.55	7/16		•	•
1/4 RRS	1/4-18	0.281	1.09	0.75	9/16	•	•	•
3/8 RRS	3/8-18	0.406	1.22	0.87	3/4	•	•	•
1/2 RRS	1/2-14	0.531	1.47	1.01	7/8	•	•	•
3/4 RRS	3/4-14	0.719	1.59	1.11	1 1/16	•	•	