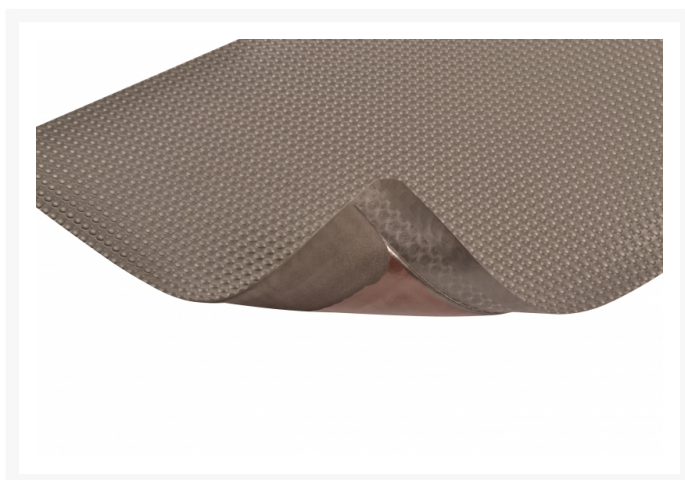
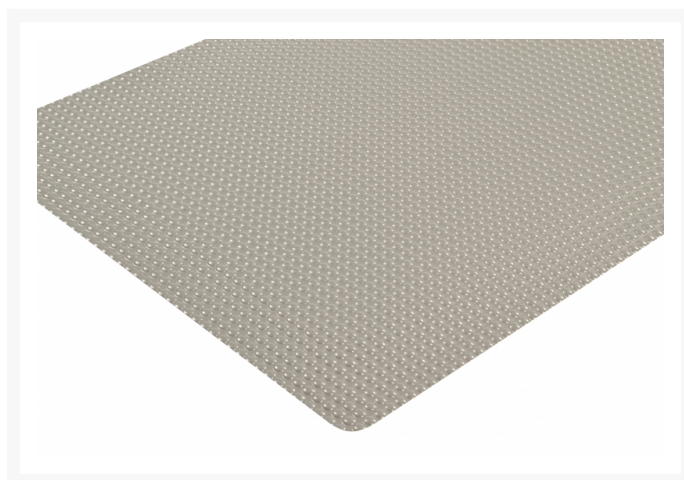
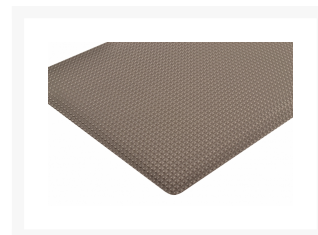
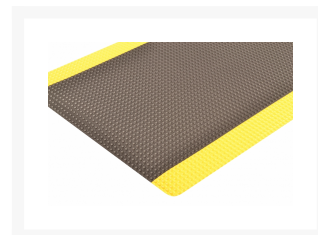
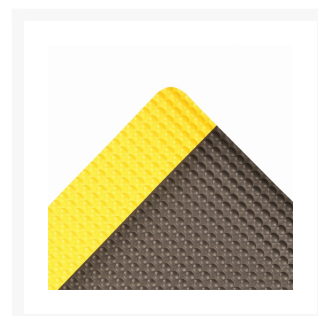
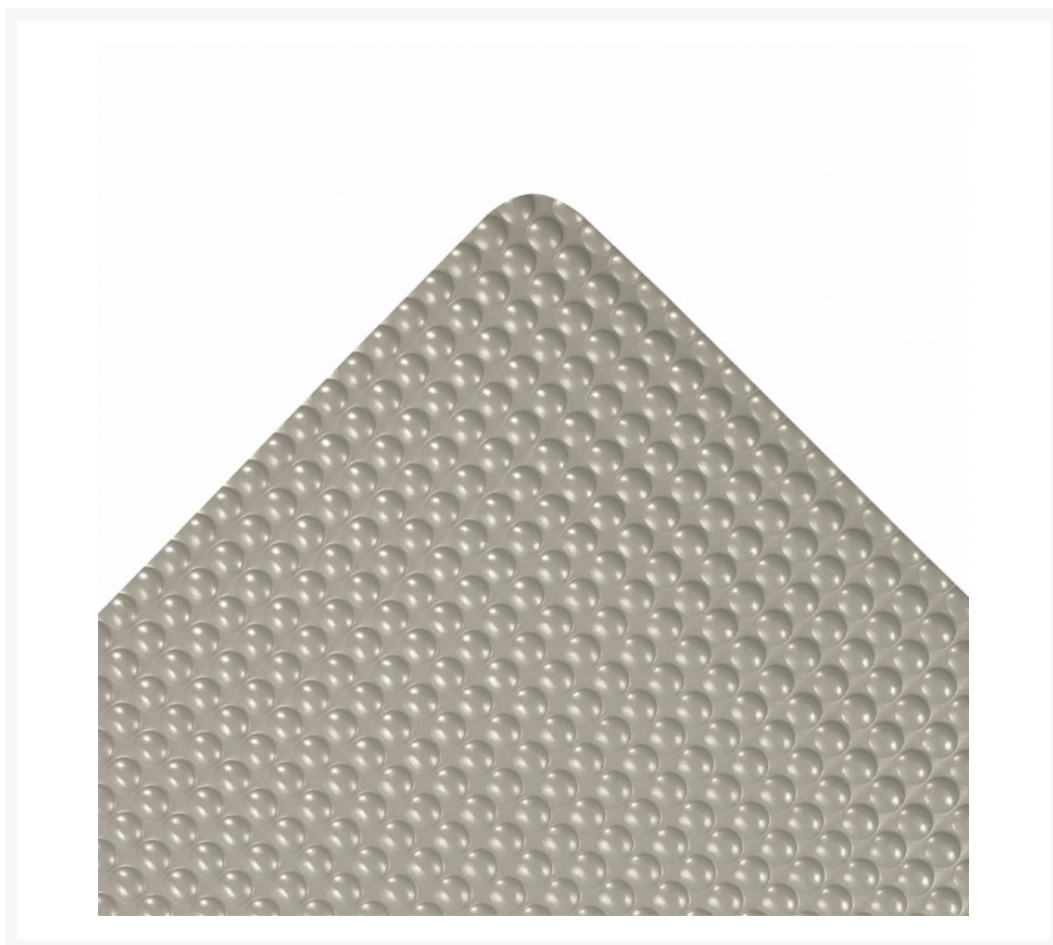
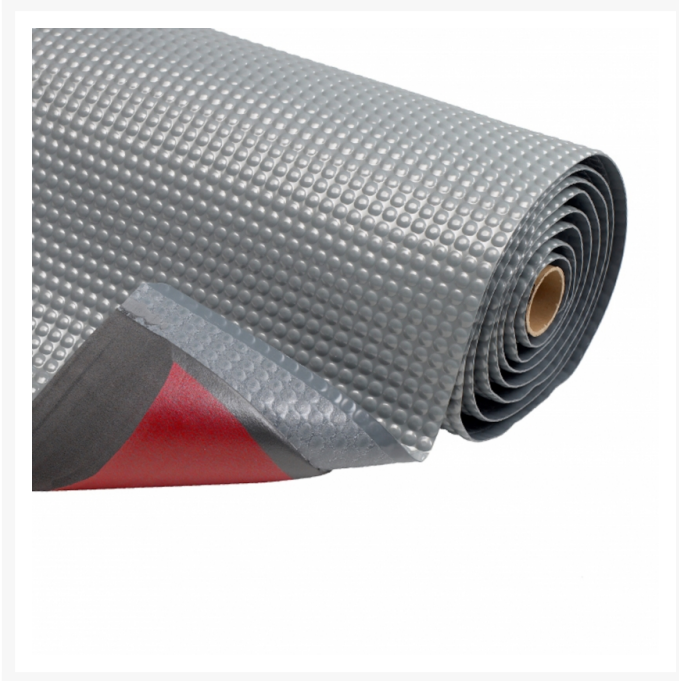
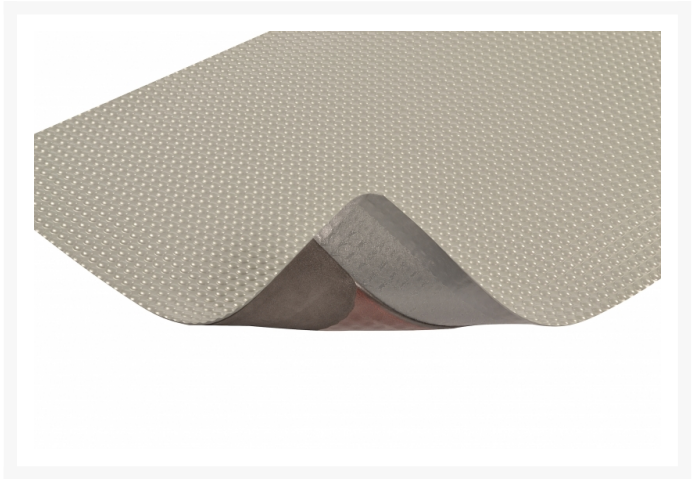




Anti Fatigue Mat Bubble Trax® Grande™ 982

Product Images





Short Description

- Heavy-duty vinyl bubble top surface combined with a dense closed cell PVC foam base provides added cushioning comfort
- UniFusion™ bond guaranteed for the life of the mat
- Redstop™ non-slip backing to reduce mat slippage
- Beveled edges on all 4 sides
- Certified by the NFSI (National Floor Safety Institute)

Description

Bubble Trax® Grande™ is a unique high performance anti-fatigue floor mat with a bubble top surface design and is a full ONE-INCH thick providing the ultimate in ergonomic comfort and durability. Bubble Trax® Grande™ combines a heavy-duty vinyl top surface with a dense sponge backing utilizing NoTrax® exclusive UniFusion™ technology. This virtually eliminates the possibility of de-lamination. NoTrax® laminate floor mats that come with RedStop™, a uniquely engineered non-slip backing technology, eliminates the slipping and sliding of floor mats on smooth surface flooring such as tile, wood, marble, and treated concrete. The sloped beveled edges reduce tripping hazards and allow easy access on and off the mat. Extremely well suited for multi-shift operations in dry work area where the worker is standing for prolonged periods of time; workstations, assembly lines.

Specifications

Model No	982
Available Colors	Black; Black/Yellow; Gray
Overall Thickness	1
Roll Sizes	2'x 72'; 3'x 72'; 4'x 72'; 5'x 72'
Custom Lengths	2', 3', 4' and 5' widths (up to 72' long) * Gray not available in 4' and 5' widths
Standard sizes	2'x 3'; 3'x 5'
Group	Ergonomic, Anti-fatigue & Safety Matting
Environment	Dry Areas
Special Characteristics	NSFI certified. Free of DMF, free of ozone depleting substances, free of silicone and free of heavy metals
Recommended Use	For placement in manufacturing plants, production lines, assembly lines, CNC machines, metal working for individual workstations and custom work platforms
Special Remarks	Bubble-top design for greater comfort and ergonomic support. Ideal for multi-shift environments. Full 1" thick version for applications that require additional comfort.
Surface	Industrial Bubble Pattern
Edges	Beveled edges on all sides
Usage Intensity	Heavy duty
Material Specifications	PVC on microcellular vinyl base
Backing	Closed Cell Polyvinylchloride with RedStop™ slip-resistant backing
Process	Lamination
Weight Lbs/sqft	1.7
Fire Rating US	Pass
Anti-Fatigue Rating	Superior
Slip Resistance Rating	Superior
Wear Resistance Rating	Superior

Prop 65

⚠️WARNING: This product can expose you to chemicals including di-2-ethylhexyl phthalate and/or diisononyl phthalate which is known to the State of California to cause cancer, birth defects or reproductive harm. For more information, visit www.P65Warnings.ca.gov.

Product Options

Color:	Black
	Black/Yellow
	Gray
Dimensions:	2ft x 3ft
	2ft x 72ft
	2ft x Specify Length
	3ft x 5ft
	3ft x 72ft
	3ft x Specify Length
	4ft x 72ft
	4ft x Specify Length