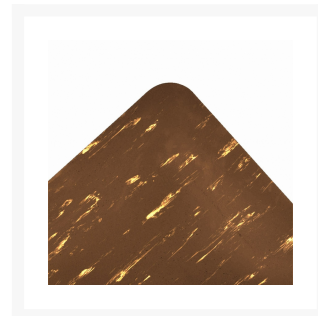
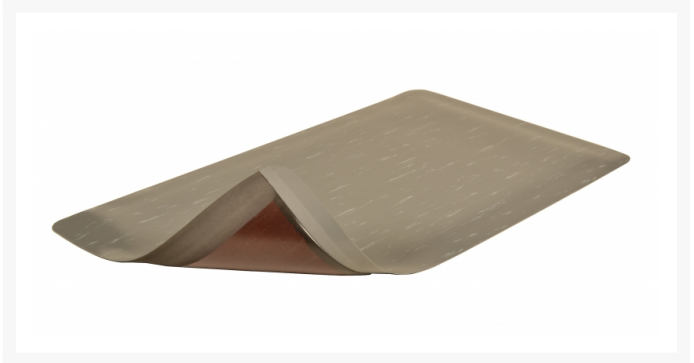
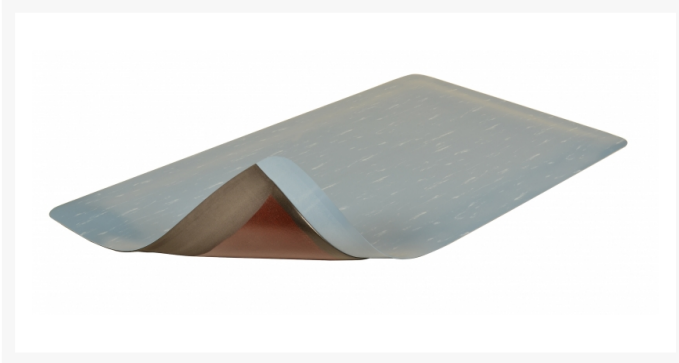
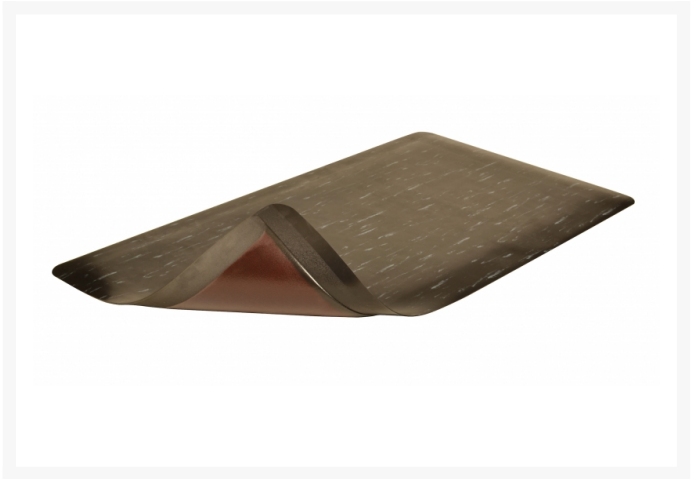




# Anti Fatigue Mat Marble Sof-Tyle™ Grande™ 970

## Product Images







## Short Description

---

- Heavy-duty vinyl marble-pattern top surface combined with a dense closed cell PVC foam base provides added cushioning comfort
- Smooth attractive surface easy to sweep clean
- UniFusion™ bond guaranteed for the life of the mat
- Redstop™ non-slip backing to reduce mat slippage
- Beveled edges on all 4 sides
- Certified by the NFSI (National Floor Safety Institute)

## Description

---

Marble Sof-Tyle™ Grande™ is an anti-fatigue floor mat provides the ultimate in comfort and ergonomic support at a full ONE-INCH thick. The stylish smooth marble-pattern design complements any décor and the durable vinyl top surface is easy to sweep clean or damp mop. The top surface is combined with a dense closed cell foam base utilizing NoTrax® exclusive UniFusion™ technology. This virtually eliminates the possibility of de-lamination. NoTrax® laminate floor mats that come with RedStop™, a uniquely engineered non-slip backing technology, eliminates the slipping and sliding of floor mats on smooth surface flooring such as tile, wood, marble, and treated concrete For dry applications such as lab testing area, check-out counters, order fulfillment lines and pharmacies. The sloped beveled edges reduce tripping hazards and allow easy access on and off the mat.

## Specifications

Model No	970
Available Colors	Black; Blue; Gray
Overall Thickness	1
Roll Sizes	2'x 75'; 3'x 75'; 4'x 75'
Custom Lengths	2', 3' and 4' widths (up to 75' long)
Standard sizes	2'x 3'; 3'x 5'; 3'x 12'
Group	Ergonomic, Anti-fatigue & Safety Matting
Environment	Dry Areas
Special Characteristics	Coefficient of friction NSF certified   Free of DOP, free of DMF, free of ozone depleting substances, free of silicone and free of heavy metals
Recommended Use	For placement in manufacturing plants, assembly lines, picking, packing and logistics warehouses, individual work stations.
Special Remarks	Recommended where there is a minimal amount of debris in the environment and a concern for the mat to match a décor. Full 1" thick version for applications that require additional comfort.
Surface	Marble Pattern
Edges	Beveled edges on all sides
Usage Intensity	Heavy duty
Material Specifications	PVC on microcellular vinyl base
Backing	Closed Cell Polyvinylchloride with RedStop™ slip-resistant backing
Process	Lamination
Weight Lbs/sqft	1.5
Fire Rating US	Pass
REACH Compliant	Reach compliant (Registration, Evaluation, Authorization and Restriction of Chemicals).
Anti-Fatigue Rating	Superior
Slip Resistance Rating	Superior

Wear Resistance Rating

Superior

## Prop 65

---

**⚠️WARNING:** This product can expose you to chemicals including di-2-ethylhexyl phthalate and/or diisononyl phthalate which is known to the State of California to cause cancer, birth defects or reproductive harm. For more information, visit [www.P65Warnings.ca.gov](http://www.P65Warnings.ca.gov).

## Product Options

---

Color:	Black
	Blue
	Gray
Dimensions:	2ft x 3ft
	2ft x 75ft
	2ft x Specify Length
	3ft x 12ft
	3ft x 5ft
	3ft x 75ft
	3ft x Specify Length
	4ft x 75ft
	4ft x Specify Length