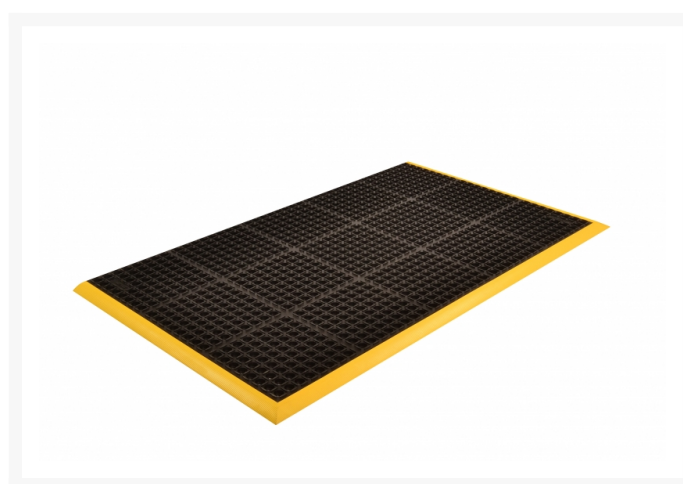
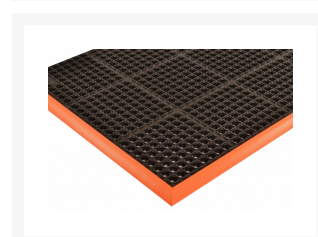
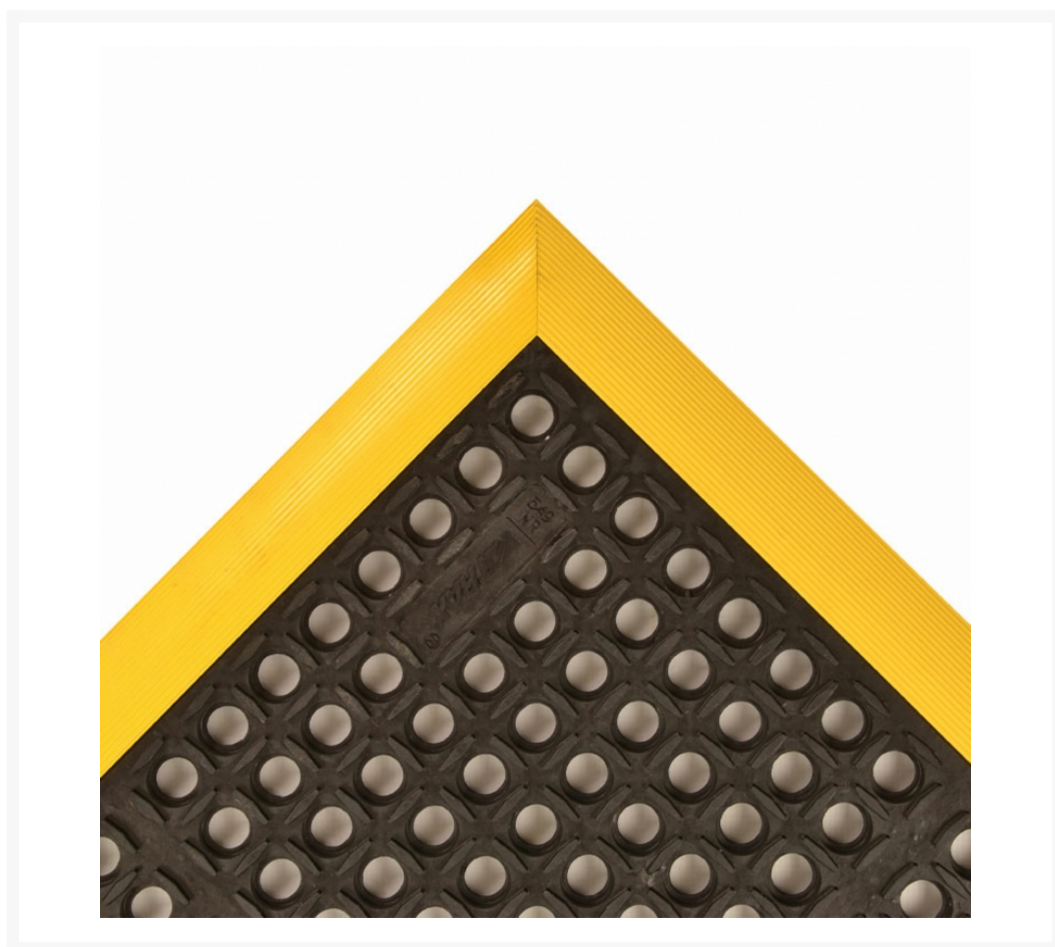


Drainage Anti-Fatigue Mat Safety Stance® 549

Product Images







Short Description

- Resilient natural rubber compound withstands many common industrial cutting oils and chemicals
- Large hole configuration facilitates drainage and resists clogging
- Raised mini-diamond studs on top surface minimize slippage
- Colored beveled borders are permanently affixed to the mat to prevent swelling/ curling
- Beveled edges available on 3 or 4 sides
- 3-sided borders 26x40", 38x40", 38x64", 38x124" 4-sided borders 28x40", 40x40", 40x64", 40x124"

Description

Safety Stance® is made from a grease resistant rubber compound to withstand many of the more commonly found industrial cutting oils and chemicals. Particularly well suited for wet or dry work areas, Safety Stance® features a large hole drainage system with a mini-diamond studded top surface to minimize slippage. Permanently affixed beveled edges are on three sides of the mat or available on all 4 sides of the mat.

Specifications

Model No	549
Available Colors	Black/Orange; Black/Yellow
Overall Thickness	7/8
Standard sizes	26"x 40"; 28"x 40"; 38"x 40"; 38"x 64"; 38"x 124"; 40"x 64"; 40"x 124"
Group	Ergonomic, Anti-fatigue & Safety Matting
Environment	Wet/Dry and Oily Areas
Special Characteristics	Free of DOP, free of DMF, free of ozone depleting substances, free of silicone and free of heavy metals Resistant to industrial oils and harsh chemicals Resistant to most chemicals
Recommended Use	For placement in manufacturing plants, production lines, assembly lines, CNC machines, metal working for individual workstations and custom work platforms
Special Remarks	Borders are a 100% nitrile rubber compound offering the same resistance to oils/chemicals as the mat - competitor's products use vinyl borders which can degrade.
Surface	Large Drainage Holes
Edges	Orange and yellow beveled edges
Usage Intensity	Heavy duty
Material Specifications	Natural rubber
Process	Compression Molding
Weight Lbs/sqft	2.9
Fire Rating US	Pass
REACH Compliant	Reach compliant (Registration, Evaluation, Authorization and Restriction of Chemicals).
Anti-Fatigue Rating	Best
Slip Resistance Rating	Best
Wear Resistance Rating	Best

Product Options

Color:	Black/Orange
	Black/Yellow
Dimensions:	26in x 40in
	28in x 40in
	38in x 124in
	38in x 40in
	38in x 64in
	40in x 124in
	40in x 40in
	40in x 64in