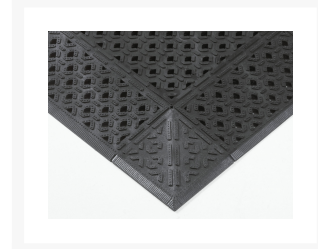
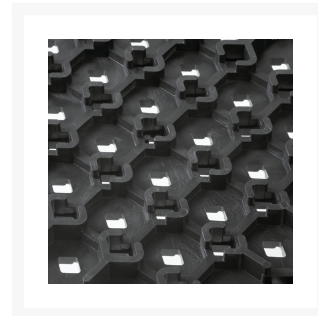
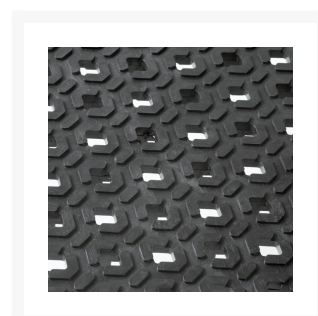
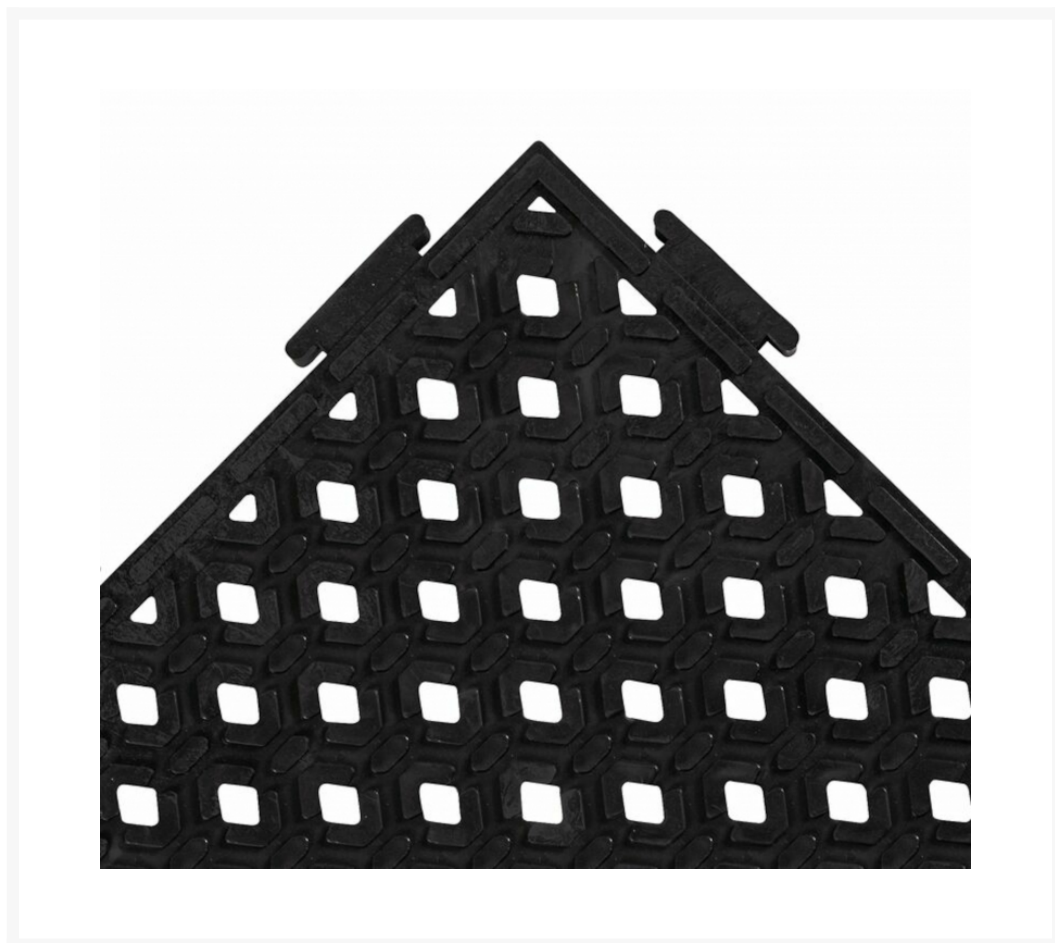
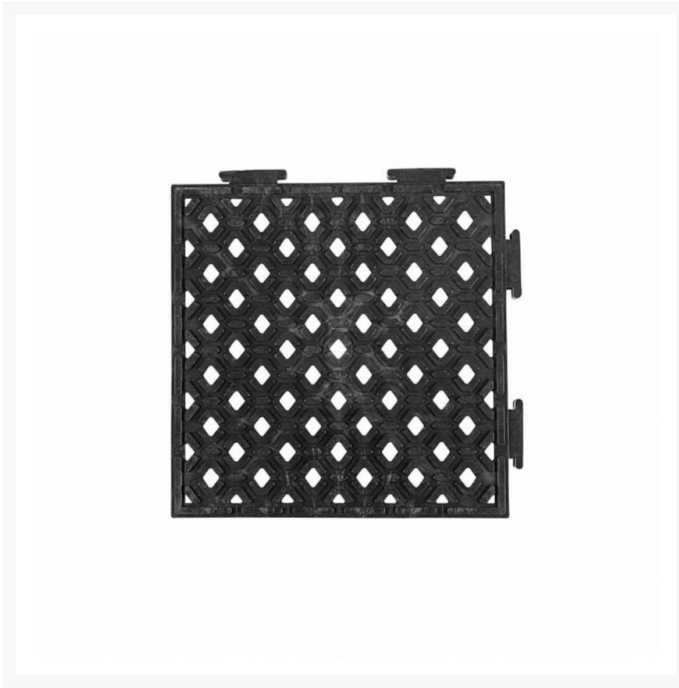


# Drainage Floor Mat Tiles Cushion-Lok™ Tile 520

## Product Images





## Short Description

---

- A tough PVC based workstation mat made from 100% recycled materials (black only)
- Porthole drainage system removes liquids and debris from worker platform
- Raised footing design elevates the worker out of the spillage
- Highly resistant to industrial chemicals
- Stock size mats have beveled edges permanently affixed on 3 sides for a true workstation mat
- Accessories: 12x12" Tile (black only) 6x12" Ramps (yellow only) 6x6" Corners (yellow only)

## Description

---

Cushion-Lok™ is a tough PVC based workstation mat intended for wet environments where resistance to harsh industrial chemicals is a necessity. Cushion-Lok™ has hundreds of portholes to facilitate drainage while the worker is elevated on a series of blades to increase traction and keep the worker out of the spillage. Cushion-Lok™ is manufactured from 100% recycled PVC for greater resistance to industrial chemicals, cutting fluids, oils and greases. Create your own workstation configuration or select an assembled stock size.

## Specifications

Model No	520-Tile
Available Colors	Black
Overall Thickness	7/8
Standard sizes	6"x 12"; 12"x 12"
Group	Ergonomic, Anti-fatigue & Safety Matting
Environment	Wet/Dry and Oily Areas
Special Characteristics	Available yellow borders along sides comply with OSHA code 1910-144   Free of DOP, free of DMF, free of ozone depleting substances, free of silicone and free of heavy metals   Resistant to most chemicals
Recommended Use	For placement in manufacturing plants, assembly lines, picking, packing and logistics warehouses, individual work stations.
Special Remarks	Factory-assembled custom configurations available - Call Customer Service for more information (800) 621-2802
Surface	Perforated Drainage Pattern
Edges	Attachable beveled edges are available
Usage Intensity	Heavy duty
Installation	The modular matting system consists of 12in x 12in modular tiles that interlock for on site installation with a rubber hammer.
Material Specifications	PVC
Process	Injection Molding
Weight Lbs/sqft	1.9
Fire Rating US	Pass
REACH Compliant	Reach compliant (Registration, Evaluation, Authorization and Restriction of Chemicals).
Anti-Fatigue Rating	Best
Slip Resistance Rating	Best
Wear Resistance Rating	Best

## Prop 65

---

**⚠️WARNING:** This product can expose you to chemicals including di-2-ethylhexyl phthalate and/or diisononyl phthalate which is known to the State of California to cause cancer, birth defects or reproductive harm. For more information, visit [www.P65Warnings.ca.gov](http://www.P65Warnings.ca.gov).

## Product Options

---

Dimensions:	0.5ft x 1ft
	1ft x 1ft