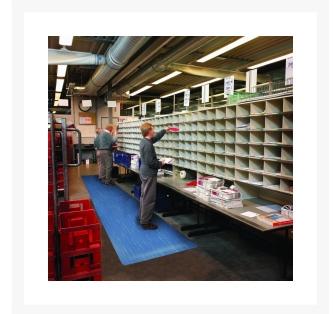
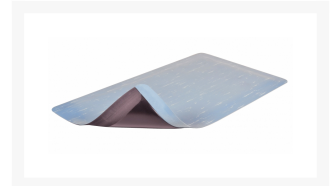


3' x 5', Blue, Marble-Tuff™ Max Anti Fatigue Mat, 512

Product Images



Short Description

- Durable smooth marble-pattern top surface of heavy-duty vinyl
- Dense closed cell PVC foam base provides added cushioning comfort
- Smooth attractive surface easy to sweep clean
- Beveled edges on all 4 sides

Description

Marble Tuff™ Max is an anti-fatigue floor mat provides the ultimate in comfort and ergonomic support at a full ONE-INCH thick. The stylish smooth marble-pattern design complements any décor. The durable vinyl top surface is easy to sweep clean or damp mop and is combined with a dense closed cell foam base to provide relief for leg and back discomfort in work applications where standing occurs for long periods of time. The sloped beveled edges reduce tripping hazards and allow easy access on and off the mat.

Specifications

Model No	512S0035BU
Color	Blue
Dimensions	3ft x 5ft
Thickness	1in
UPC	662641843714
Group	Ergonomic, Anti-fatigue & Safety Matting
Environment	Dry Areas
Recommended Use	For placement in manufacturing plants, assembly lines, picking, packing and logistics warehouses, individual work stations.
Special Remarks	Areas that require added anti-fatigue relief and durability in an attractive style. Full 1" thick version for applications that require additional comfort.
Surface	Marble Pattern
Edges	Beveled edges on all sides
Usage Intensity	Medium duty
Material Specifications	PVC on microcellular vinyl base
Backing	Closed Cell Polyvinylchloride
Process	Lamination
Weight Lbs/sqft	1.5
Thickness Inch	1in
Fire Rating US	Pass
REACH Compliant	Reach compliant (Registration, Evaluation, Authorization and Restriction of Chemicals).
Anti-Fatigue Rating	Better
Slip Resistance Rating	Best
Wear Resistance Rating	Better

Prop 65

⚠️WARNING: This product can expose you to chemicals including di-2-ethylhexyl phthalate and/or diisononyl phthalate which is known to the State of California to cause cancer, birth defects or reproductive harm. For more information, visit www.P65Warnings.ca.gov.