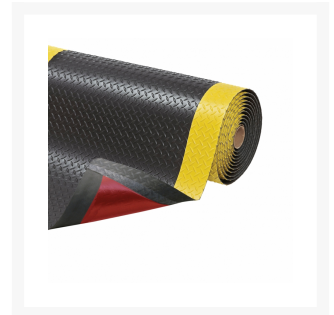
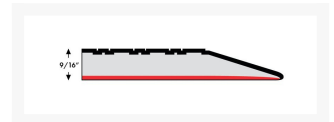


3' x 12', Black-Yellow, Cushion Trax[®] Anti Fatigue Mat, 479

Product Images





Short Description

- Long-lasting vinyl top surface made from 100% recycled materials is combined with a dense closed cell PVC foam base
- Diamond-plate surface texture provides added traction
- UniFusion™ bond guaranteed for the life of the mat
- Redstop™ non-slip backing to reduce mat slippage
- Beveled edges on all 4 sides

Description

Cushion Trax® is engineered to meet the toughest requirements of today's industrial applications and is particularly suited for multi-shift operations in dry work areas where the worker is standing for prolonged periods of time; workstations, assembly lines. The heavy-duty vinyl diamond-plate design provides non-directional traction, and is easy to clean. The top surface is combined with a dense closed cell foam base utilizing NoTrax exclusive UniFusion™ technology. This virtually eliminates the possibility of de-lamination. NoTrax laminate floor mats that come with RedStop™, a uniquely engineered non-slip backing technology, eliminates the slipping and sliding of floor mats on smooth surface flooring such as tile, wood, marble, and treated concrete. The sloped beveled edges reduce tripping hazards and allow easy access on and off the mat.

| | |
|--|--|
| Model No | 479S0312YB |
| Color | Black/Yellow |
| Dimensions | 3ft x 12ft |
| Thickness | 9/16in |
| UPC | 662641657717 |
| Available Colors | Black; Gray |
| Roll Sizes | 2'x75', 3'x75', 4'x75', 5'x75' |
| Custom Lengths | 2', 3', 4' and 5' widths (up to 150' long) |
| Standard sizes | 2'x3', 3'x5', 3'x12' |
| Group | Ergonomic, Anti-fatigue & Safety Matting |
| Environment | Dry Areas |
| Special Characteristics | Coefficient of friction NSF1 certified Free of DOP, free of DMF, free of ozone depleting substances, free of silicone and free of heavy metals |
| Recommended Use | In manufacturing plants, assembly lines, picking, packing and logistics warehouses, individual workstations. Also suitable for commercial environments including hotels, reception desks, shop counters, department stores, banks, restaurants, etc. |
| Special Remarks | Diamond surface provides non-directional slip resistance |
| Surface | Industrial Diamond Plate |
| Edges | Beveled edges on all sides |
| Usage Intensity | Heavy duty |
| Installation | No installation required |
| Material Specifications | PVC on microcellular vinyl base |
| Backing | Closed Cell Polyvinylchloride with RedStop™ slip-resistant backing |
| Process | Lamination |
| Specifications Weight Lbs/sqft | 1.3 |
| Thickness Inch | 9/16in |

| | |
|------------------------|---|
| Fire Rating US | Pass |
| REACH Compliant | Reach compliant (Registration, Evaluation, Authorization and Restriction of Chemicals). |
| Anti-Fatigue Rating | Best |
| Slip Resistance Rating | Best |
| Wear Resistance Rating | Best |

Prop 65

⚠️WARNING: This product can expose you to chemicals including di-2-ethylhexyl phthalate and/or diisononyl phthalate which is known to the State of California to cause cancer, birth defects or reproductive harm. For more information, visit www.P65Warnings.ca.gov.