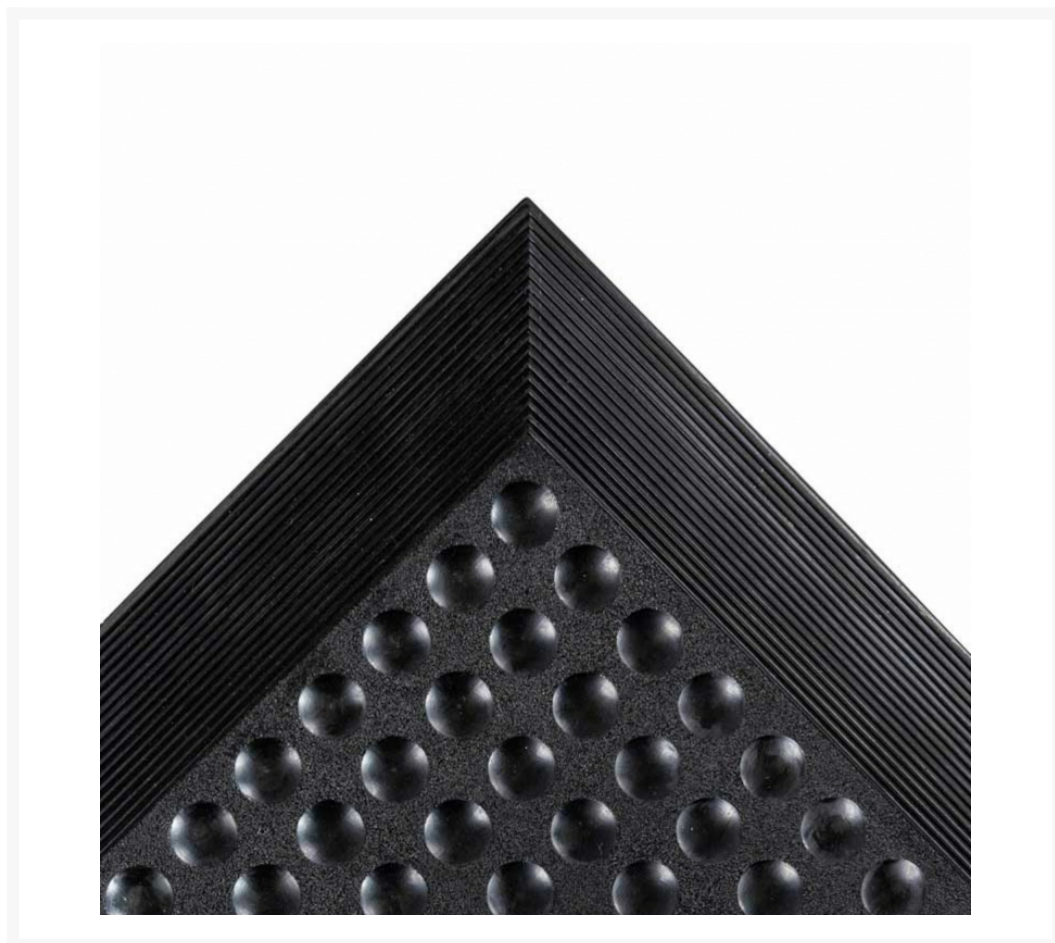
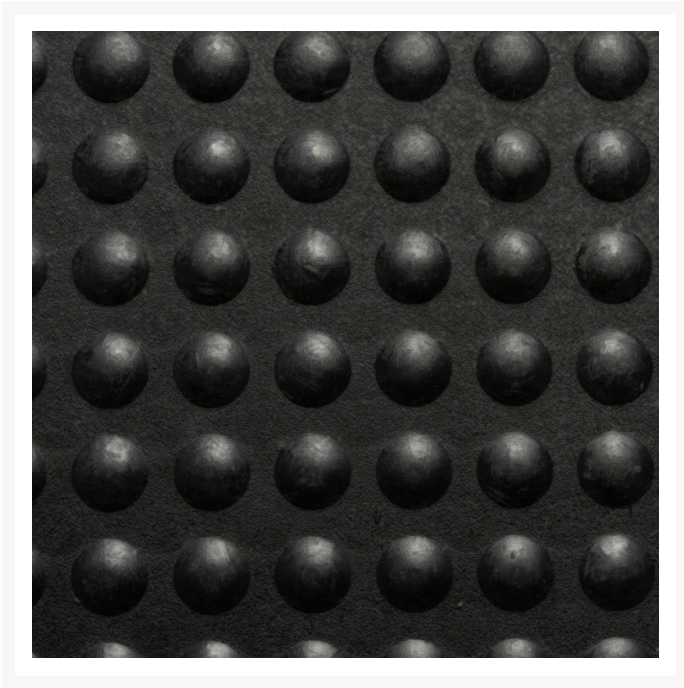




ESD Static Dissipative Anti-Fatigue Mat Skystep™ 457

Product Images





Short Description

- Rubber molded, air-pocket underside anti-fatigue mat
- Dissipative heavy duty natural rubber compound
- Designed to suction to the ground to prevent shifting while trapping air in its chambers
- Meets or exceeds requirements of ANSI/ESD S20.20 and per ANSI/ESD STM7.1
- Resistance Point to Ground (Rtg): 1×10^5 to 1×10^7 ohms
Resistance Point to Point (Rtt): 1×10^5 to 1×10^7 ohms
- Beveled edges on all 4 sides
- Optional 051 grounding cord available, not required

Description

The Skystep™ ESD static dissipative mat is a standalone rubber mat designed for individual work stations. Ergonomically engineered, the SkyStep™ ESD utilizes the power of air. The mat is designed to suction to the ground to prevent shifting while trapping air in its chambers. These air pockets combined with the resiliency of the rubber create an ultimate cushioning effect while keeping the mat lightweight. superb anti-fatigue properties due to the ergonomic bubble pattern. Molded, beveled edges are on all four sides to prevent trip hazards.

Specifications

Model No	457
Available Colors	Black
Overall Thickness	5/8
Standard sizes	2'x 3'; 3'x 4'; 3'x 5'
Group	Ergonomic, Anti-fatigue & Safety Matting
Environment	Dry Areas
Special Characteristics	Free of DOP, free of DMF, free of ozone depleting substances, free of silicone and free of heavy metals
Recommended Use	For placement in ESD assembly lines, picking, packing and logistics warehouses, individual work stations.
Special Remarks	Lightweight, easy to move to clean the floor underneath
Surface	Industrial Bubble Pattern
Edges	Molded beveled edges on all sides
Usage Intensity	Medium duty
Material Specifications	Static dissipative natural rubber
Process	Compression Molding
Weight Lbs/sqft	1.8
Fire Rating US	Pass
REACH Compliant	Reach compliant (Registration, Evaluation, Authorization and Restriction of Chemicals).
Anti-Fatigue Rating	Best
Slip Resistance Rating	Better
Wear Resistance Rating	Better

Product Options

Dimensions:

2ft x 3ft

3ft x 4ft

3ft x 5ft