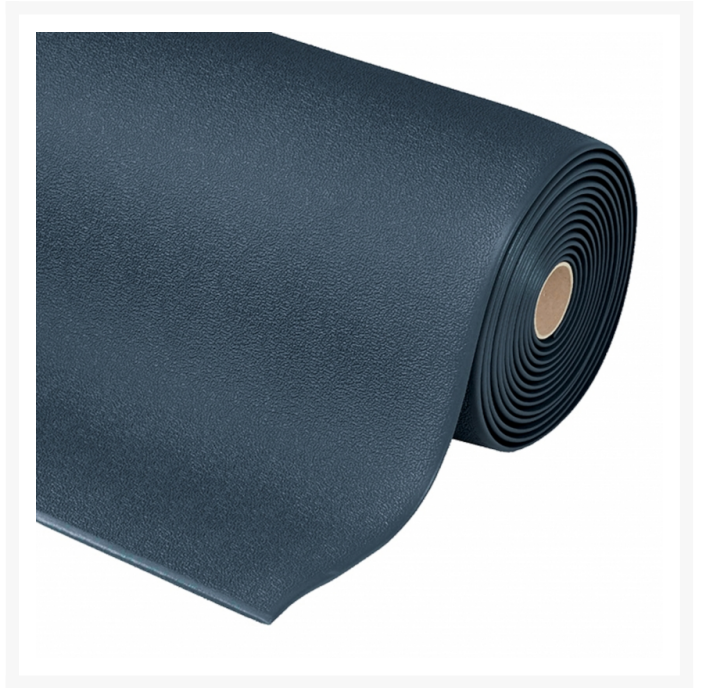
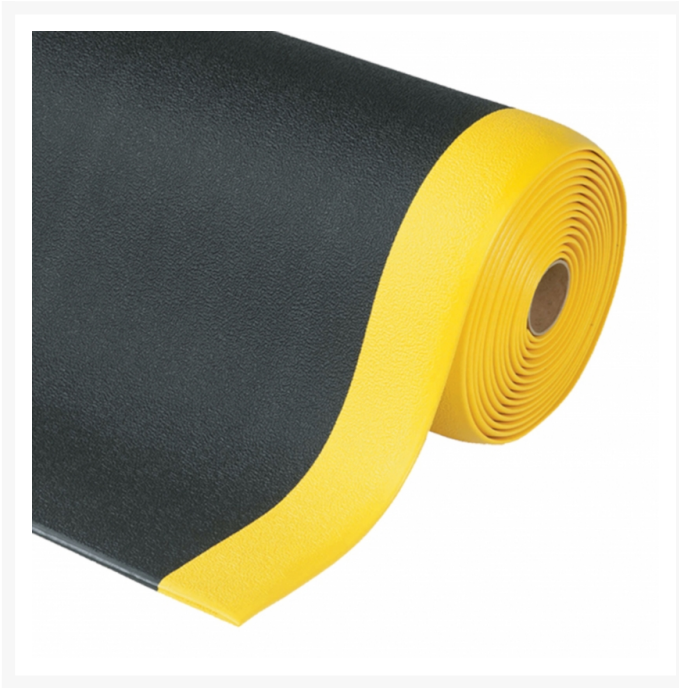

Anti-Fatigue Mat Pebble Step Sof-Tred™ Dyna-Shield® 415

Product Images





Short Description

- Non-directional pebble textured embossed mat maximizes worker comfort
- PVC foam provides added cushioning comfort, relieves leg and back discomfort
- Exclusive Dyna-Shield® top surface manufactured directly into the mat for long lasting wear
- Superior tear resistance and tensile strength
- Provides an insulated barrier to cold floors
- Perfect anti-fatigue mat for dry applications
- Beveled edges on all 4 sides

Description

Pebble Step Sof-Tred™ with Dyna-Shield® is an anti-fatigue mat that is designed to provide traction with its non-directional pebble embossed top surface that allows for sure footing and is easy to sweep clean. The NoTrax® exclusive Dyna-Shield® PVC foam is manufactured with a tough protective barrier top layer that provides long lasting wear and outperforms the competition in tear resistance and tensile strength. Dyna-Shield® products are more resistant to wear than traditional sponge matting. Designed for use in medium duty dry work areas.

Specifications

Model No	415
Available Colors	Black; Black/Yellow
Overall Thickness	3/8; 5/8
Roll Sizes	3/8" x 2'x 60'; 3/8" x 3'x 60'; 3/8" x 4'x 60'; 5/8" x 2'x 60'; 5/8" x 3'x 60'; 5/8" x 4'x 60'
Custom Lengths	2', 3' and 4' widths (up to 60' long)
Standard sizes	3/8" x 2'x 3'; 3/8" x 2'x 6'; 3/8" x 3'x 4'; 3/8" x 3'x 5'; 3/8" x 3'x 6'; 3/8" x 3'x 12'; 5/8" x 2'x 3'; 5/8" x 2'x 6'; 5/8" x 3'x 4'; 5/8" x 3'x 5'; 5/8" x 3'x 6'; 5/8" x 3'x 12'
Group	Ergonomic, Anti-fatigue & Safety Matting
Environment	Dry Areas
Special Characteristics	Free of DOP, free of DMF, free of ozone depleting substances, free of silicone and free of heavy metals
Recommended Use	For placement in manufacturing plants, assembly lines, picking, packing and logistics warehouses, individual work stations.
Special Remarks	With Dyna-Shield® - The only mid-priced/high performance anti-fatigue sponge mat available with durability approaching that of competitive "laminated" mats. Extends service life by 50%.
Surface	Structured Pebble Pattern
Edges	Beveled edges on all sides
Usage Intensity	Medium duty
Custom Description	Available in stock and rolls sizes and in custom lengths. Available colors in black/yellow and black
Cleaning Remark	Sweep regularly or dry mop the surface and the back of the mat. The surface can be damp-mopped with a mild soap/detergent.
Material Specifications	Closed Cell Polyvinylchloride
Backing	Closed Cell Polyvinylchloride
Process	Foaming
Weight Lbs/sqft	0.66

Fire Rating US	Pass
REACH Compliant	Reach compliant (Registration, Evaluation, Authorization and Restriction of Chemicals).
Anti-Fatigue Rating	Better
Slip Resistance Rating	Better
Wear Resistance Rating	Better

Product Options

Color:	Black
	Black/Yellow
Dimensions:	2ft x 3ft
	2ft x 60ft
	2ft x 6ft
	2ft x Specify Length
	3ft x 12ft
	3ft x 4ft
	3ft x 5ft
	3ft x 60ft
	3ft x 6ft
	3ft x Specify Length
	4ft x 60ft
	4ft x Specify Length
thickness_filter:	3/8in
	5/8in