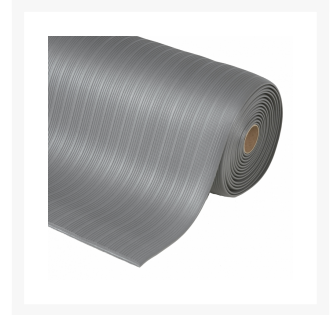
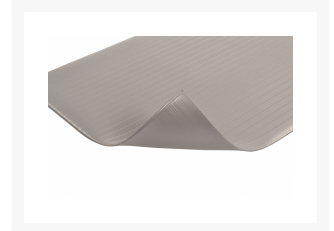
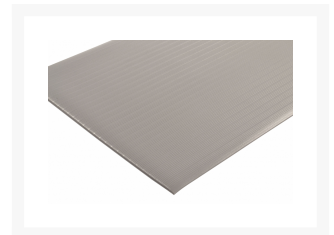
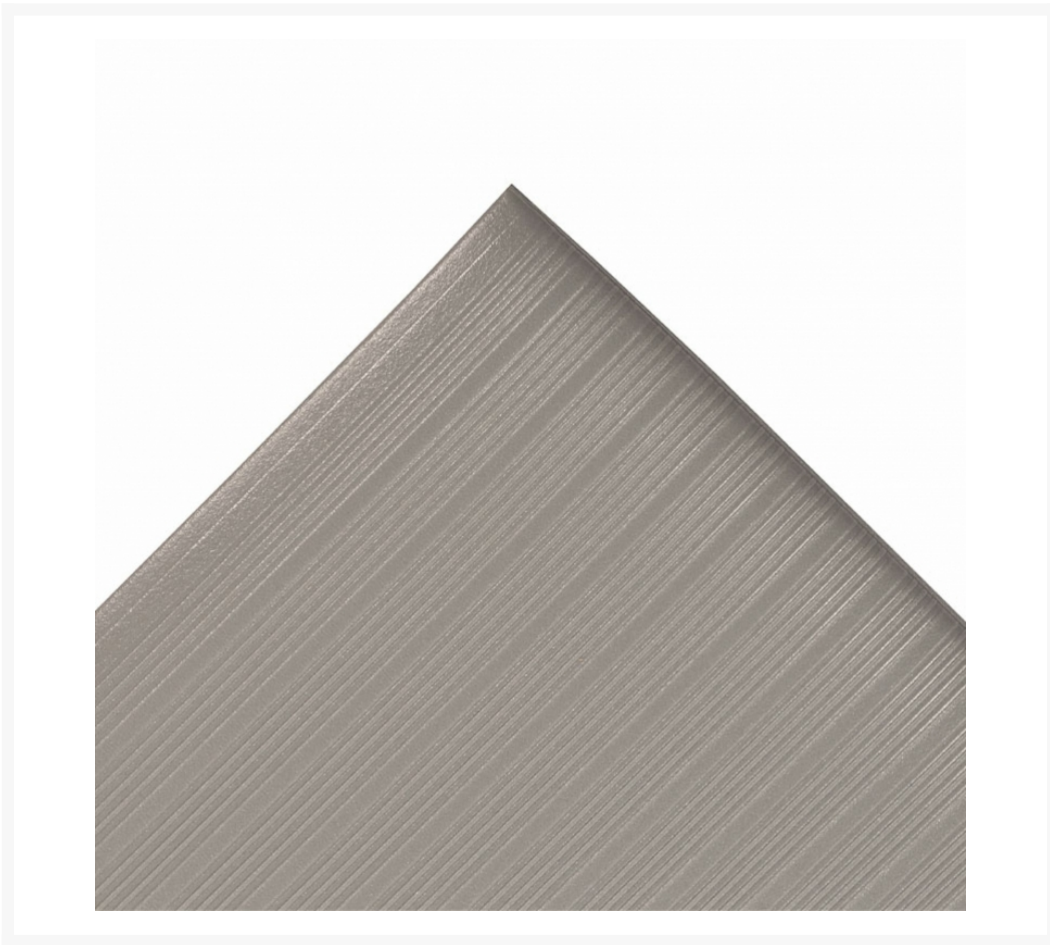


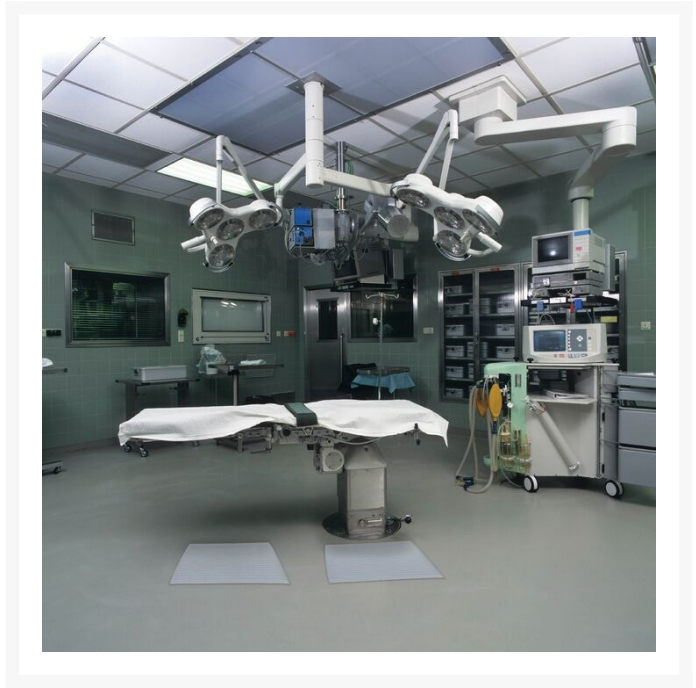
---

# 5/8" x 4' x 30', Gray, Airug<sup>®</sup> Foam Anti Fatigue Mat, 410

## Product Images

---





## Short Description

---

- Ribs run down length of the mat for added traction
- Basic anti-fatigue protection provided
- Closed cell PVC foam relieves leg and back discomfort
- Provides an insulated barrier to cold floors
- Beveled edges on all 4 sides

## Description

---

Airug® anti fatigue foam mat has an embossed ribbed top surface that runs down the mat, consisting of millions of air bubbles that enhances the mats slip resistance while providing increased basic worker fatigue relief. The PVC closed cell foam construction relieves leg and back discomfort while providing a barrier to cold floors. Airug® is intended for applications where basic anti-fatigue relief is required at a low cost.

## Specifications

|                         |   |
|-------------------------|---|
| Model No                | 410R0548GY  |
| Color                   | Gray  |
| Dimensions              | 4ft x 30ft  |
| Thickness               | 5/8in   |
| UPC                     | 662641677661  |
| Available Colors        | Black; Black/Yellow; Gray   |
| Roll Sizes              | 3/8" thickness: 2'x60', 3'x60', 4'x60', 6'x60' 5/8" thickness: 2'x30', 3'x30', 4'x30', 6'x30'                               |
| Custom Lengths          | 3/8": 2', 3' and 4' widths (up to 60' long) 5/8": 2', 3' and 4' widths (up to 30' long)                                     |
| Standard sizes          | 2'x3', 3'x5', 3'x12'  |
| Group                   | Ergonomic, Anti-fatigue & Safety Matting  |
| Environment             | Dry Areas   |
| Special Characteristics | Free of DOP, free of DMF, free of ozone depleting substances, free of silicone and free of heavy metals                     |
| Recommended Use         | For placement in manufacturing plants, assembly lines, picking, packing and logistics warehouses, individual work stations. |
| Special Remarks         | Where basic anti-fatigue and anti-slip properties are needed at a low cost  |
| Surface                 | Lengthwise Corrugated Rib Pattern   |
| Edges                   | Beveled edges on all sides  |
| Usage Intensity         | Light duty  |
| Custom Description      | Available in stock and rolls sizes and in custom lengths. Available colors in black, black/yellow and gray.                 |
| Cleaning Remark         | Sweep regularly or dry mop the surface and the back of the mat. The surface can be damp-mopped with a mild soap/detergent.  |
| Material Specifications | Closed Cell Polyvinylchloride   |
| Process                 | Foaming   |
| Weight Lbs/sqft         | 0.53  |

|                        |   |
|------------------------|---|
| Fire Rating US         | Pass  |
| REACH Compliant        | Reach compliant (Registration, Evaluation, Authorization and Restriction of Chemicals). |
| Anti-Fatigue Rating    | Good  |
| Slip Resistance Rating | Good  |
| Wear Resistance Rating | Good  |