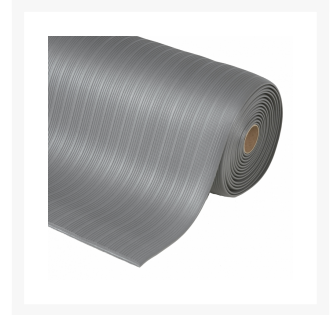
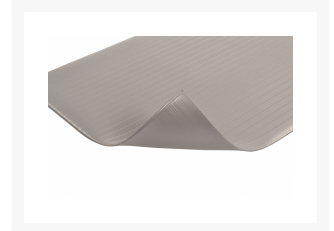
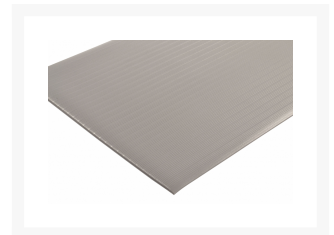
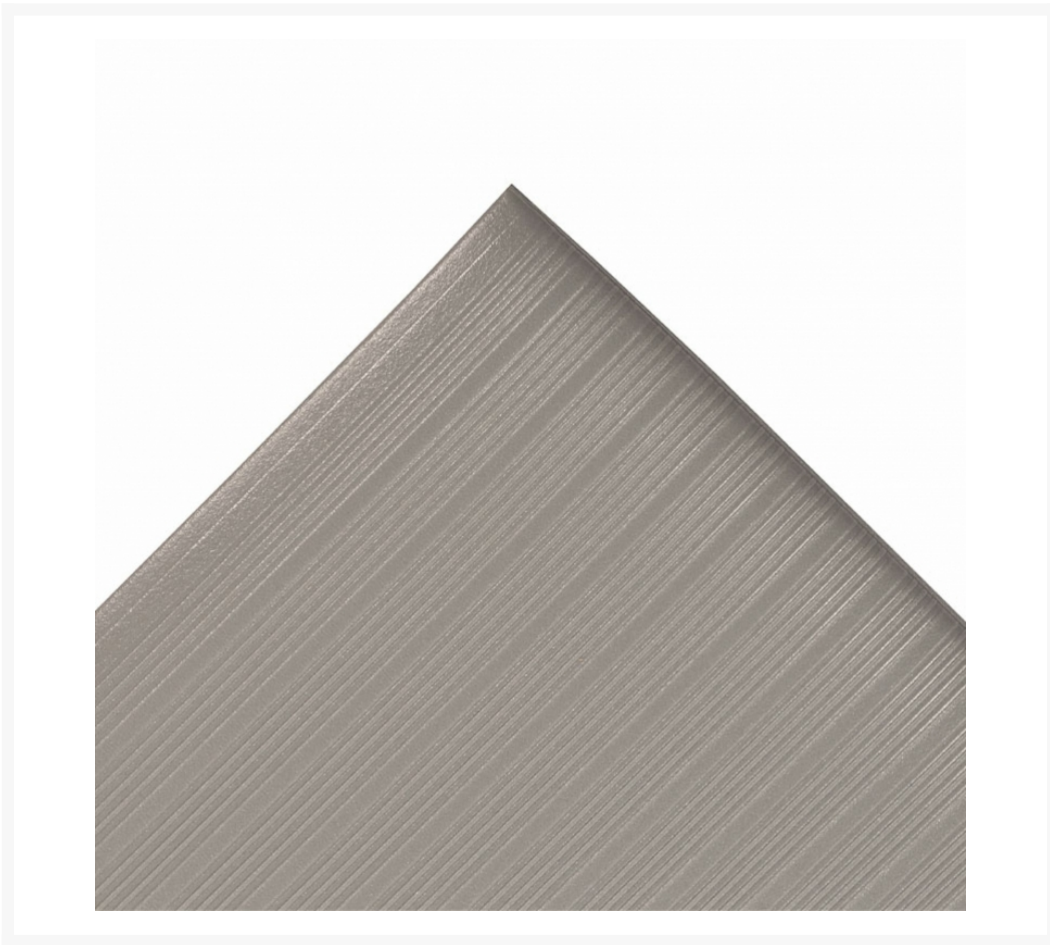
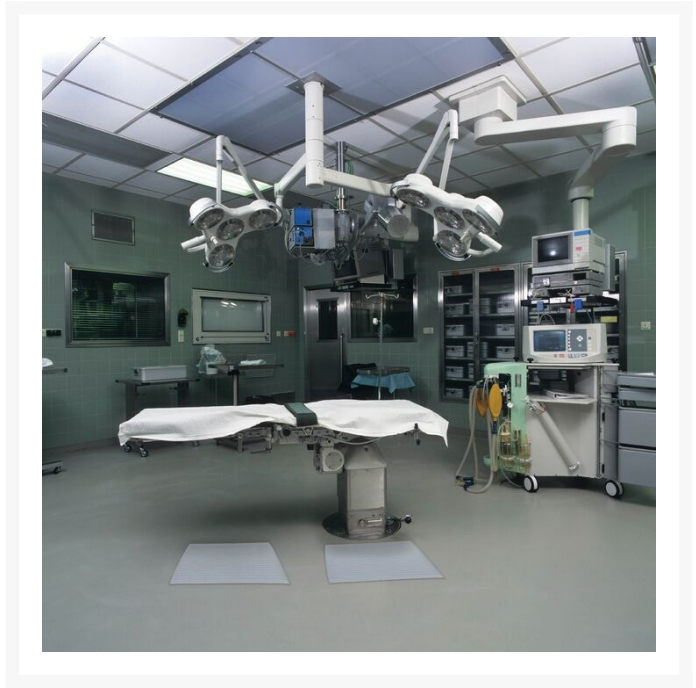

5/8" x 2' x 30', Gray, Airug[®] Foam Anti Fatigue Mat, 410

Product Images





Short Description

- Ribs run down length of the mat for added traction
- Basic anti-fatigue protection provided
- Closed cell PVC foam relieves leg and back discomfort
- Provides an insulated barrier to cold floors
- Beveled edges on all 4 sides

Description

Airug® anti fatigue foam mat has an embossed ribbed top surface that runs down the mat, consisting of millions of air bubbles that enhances the mats slip resistance while providing increased basic worker fatigue relief. The PVC closed cell foam construction relieves leg and back discomfort while providing a barrier to cold floors. Airug® is intended for applications where basic anti-fatigue relief is required at a low cost.

Specifications

Model No	410R0524GY
Color	Gray
Dimensions	2ft x 30ft
Thickness	5/8in
UPC	662641677609
Available Colors	Black; Black/Yellow; Gray
Roll Sizes	3/8" thickness: 2'x60', 3'x60', 4'x60', 6'x60' 5/8" thickness: 2'x30', 3'x30', 4'x30', 6'x30'
Custom Lengths	3/8": 2', 3' and 4' widths (up to 60' long) 5/8": 2', 3' and 4' widths (up to 30' long)
Standard sizes	2'x3', 3'x5', 3'x12'
Group	Ergonomic, Anti-fatigue & Safety Matting
Environment	Dry Areas
Special Characteristics	Free of DOP, free of DMF, free of ozone depleting substances, free of silicone and free of heavy metals
Recommended Use	For placement in manufacturing plants, assembly lines, picking, packing and logistics warehouses, individual work stations.
Special Remarks	Where basic anti-fatigue and anti-slip properties are needed at a low cost
Surface	Lengthwise Corrugated Rib Pattern
Edges	Beveled edges on all sides
Usage Intensity	Light duty
Custom Description	Available in stock and rolls sizes and in custom lengths. Available colors in black, black/yellow and gray.
Cleaning Remark	Sweep regularly or dry mop the surface and the back of the mat. The surface can be damp-mopped with a mild soap/detergent.
Material Specifications	Closed Cell Polyvinylchloride
Process	Foaming
Weight Lbs/sqft	0.53

Fire Rating US	Pass
REACH Compliant	Reach compliant (Registration, Evaluation, Authorization and Restriction of Chemicals).
Anti-Fatigue Rating	Good
Slip Resistance Rating	Good
Wear Resistance Rating	Good