

Nautilair 151406-06

MECHANICAL

DIAMETER: 12.3" (312mm)
DISCHARGE TYPE: Tangential
DISCHARGE: Standard Rectangular Flange
APPROXIMATE WEIGHT: 28lbs/12.7kg

PERFORMANCE

FLOW CLASSIFICATION: High Energy, High Output
STAGES: 1 Stage

TEMPERATURE

OPERATING TEMP: 0°C to 50°C
STORAGE TEMP: -40°C to 85°C

ELECTRICAL

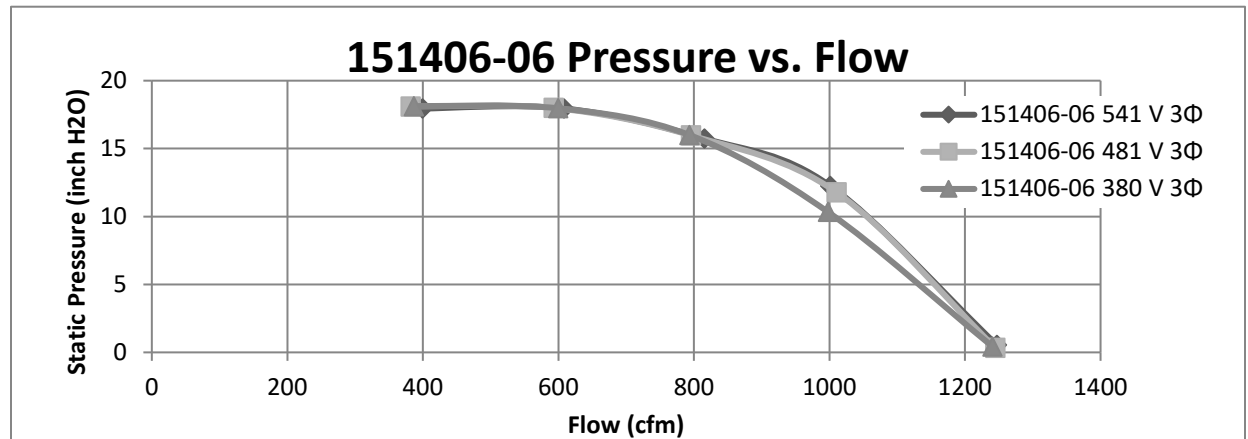
OPERATING INPUT VOLTAGE RANGE: 380-575 VAC
OPERATING INPUT VOLTAGE: 480VAC, 3 Φ

OPTIONAL FEATURES

SPEED CONTROL: PWM, Pull Down, closed loop
OTHER: 4-Pin Power, 5-Pin Control, 3 Pin Status
 Custom Calibration

REGULATORY CERTIFICATIONS

COMPLIANCE: RoHS and Reach
UL FILE NUMBER: E94403



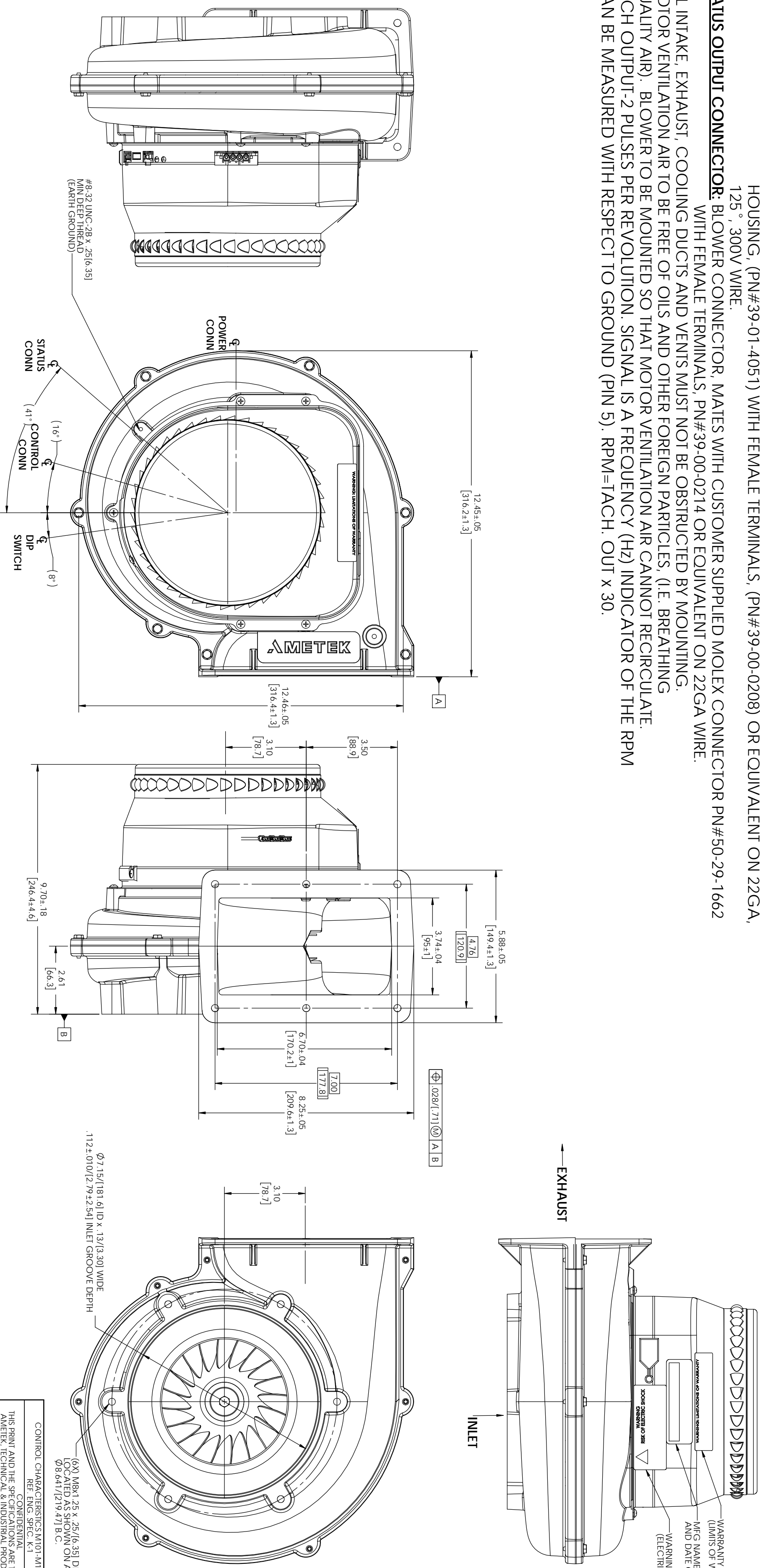
Flow Rate <i>cfm</i>	Static Pressure <i>inch H₂O</i>	Current <i>A</i>	Power Demand <i>W</i>	Voltage <i>V</i>	Flow Temperature <i>°C</i>	Rotational Speed <i>rpm</i>	Static Efficiency <i>%</i>
1247.10	0.54	7.51	4039.82	540.55	27.01	7620	1.98
1001.14	12.25	7.13	3821.04	540.56	28.13	8010	38.41
815.59	15.74	5.79	3033.12	540.60	27.82	8010	50.61
608.17	17.96	4.63	2357.82	540.60	27.80	8010	55.38
399.53	17.95	3.54	1742.11	540.63	27.66	8010	49.20

DESIGN APPLICATION: Designed to provide variable airflow for low NOx and CO emission in high efficiency gas fired combustion systems. Built with non-sparking materials. Blower housing assembly constructed of die cast aluminum. Impeller constructed from hardened aluminum. Rubber isolation mounts built into blower construction to dampen vibration within the motor. Two-piece blower housing assembly sealed, and factory leak checked. Customer is responsible to check for any leakage once the blower is installed into the final application.

MISCELLANEOUS: Motor cooling inlet and discharge vents must not be obstructed. Motor ventilation air to be free of oils and other foreign particles. Blower is to be mounted so ventilation air cannot be re-circulated.

REVISIONS			
REV	ECN NO.	CHANGE TO	DATE
A	DMR #515	RELEASE TO PRODUCTION	12-17-18
		DATE	APPRD
		PRODUCTION	MH
			KD

- NOTES:
1. ROHS AND REACH COMPLIANCE. REFERENCE AMETEK ENVIRONMENTAL SPECIFICATION ES0010 FOR DETAILS.
 2. **POWER CONNECTION:** BLOWER CONNECTOR, MATES WITH CUSTOMER SUPPLIED AMP CONNECTOR PN#350779-1 WITH FEMALE TERMINALS, PN#350536-1 OR EQUIVALENT ON 16GA, 105 °C, 600V WIRE.
 3. **CONTROL CONNECTION:** BLOWER CONNECTOR, MATES WITH CUSTOMER SUPPLIED MOLEX SERIES 5557 CONNECTOR HOUSING, (PN#39-01-4051) WITH FEMALE TERMINALS, (PN#39-00-0208) OR EQUIVALENT ON 22GA, 125 °, 300V WIRE.
 4. **STATUS OUTPUT CONNECTOR:** BLOWER CONNECTOR, MATES WITH CUSTOMER SUPPLIED MOLEX CONNECTOR PN#50-29-1662 WITH FEMALE TERMINALS, PN#39-00-0214 OR EQUIVALENT ON 22GA WIRE.
 5. ALL INTAKE, EXHAUST, COOLING DUCTS AND VENTS MUST NOT BE OBSTRUCTED BY MOUNTING.
 6. MOTOR VENTILATION AIR TO BE FREE OF OILS AND OTHER FOREIGN PARTICLES, (I.E. BREATHING QUALITY AIR). BLOWER TO BE MOUNTED SO THAT MOTOR VENTILATION AIR CANNOT RECIRCULATE.
 7. TACH OUTPUT-2 PULSES PER REVOLUTION. SIGNAL IS A FREQUENCY (HZ) INDICATOR OF THE RPM CAN BE MEASURED WITH RESPECT TO GROUND (PIN 5). RPM=TACH. OUT x 30.



POWER CONNECTION

PIN #	CONTROL	DESCRIPTION	COLOR
1	INPUT	A/C INPUT	BLACK
2	INPUT	A/C INPUT	BLACK
3	INPUT	A/C INPUT	BLACK
4	INPUT	GROUND	GREEN

CONTROL CONNECTION

PIN #	CONTROL	DESCRIPTION	COLOR
1	OUTPUT	15V-40V (OPTIONAL)	RED
2	OUTPUT	TACH-OUTPUT	WHITE
3	NOT USED	NOT USED	YELLOW
4	INPUT	PWM (15-36V) (1-20KHZ)	GREEN
5	INPUT	COMMON	BLACK

STATUS OUTPUT CONNECTION

PIN #	CONTROL	DESCRIPTION	COLOR
1	OUTPUT	ISOLATED +15VDC	RED
2	OUTPUT	OPEN COLLECTOR TRANSISTOR	BLUE
3	OUTPUT	ISOLATED COMMON	BLACK

8500-01-10
PWM PULLED DOWN

CONTROL CHARACTERISTICS: M101-M199-A/AJOR
REF. ENG. SPEC. K.1

CONFIDENTIAL
THIS PRINT AND THE SPECIFICATIONS ARE THE PROPERTY OF AMETEK, TECHNICAL & INDUSTRIAL PRODUCTS, AND HAS BEEN ISSUED WITH THE UNDERSTANDING THAT IT WILL NOT BE REPRODUCED OR TRANSMITTED IN ANY FORM OR BY ANY MEANS FOR OTHERS AND WILL BE RETURNED UPON REQUEST.

DIMENSIONING AND TOLERANCING IN ACCORDANCE WITH ANSI Y14.5M-1982
DO NOT SCALE DRAWING.

TOLERANCES
UNLESS OTHERWISE SPECIFIED
REMOVE BURS
BREAK SHARP EDGES 0.05/0.00

SCALE 1:2
COUNTRY CODE 75511
CONTROLLER NEXT ASSY
MFG DATE 12-17-18
MFG PART NO. 12-17-18
DRAWN BY J. LONGHNEY
DATE 12-17-18
CHKD BY
DATE

12.3 HIGH ENERGY MAGNET 380-575V
PWM PULLED DOWN, 3PH BLOWER OUTLINE
REV. -
SHEET 1 OF 1

AMETEK
TECHNICAL INDUSTRIAL PRODUCTS
151406-06-0