

Nautilair 150542-52

MECHANICAL

DIAMETER: 12.3" (312mm)
DISCHARGE TYPE: Tangential
DISCHARGE: Standard Rectangular Flange
APPROXIMATE WEIGHT: 28lbs/12.7kg

PERFORMANCE

FLOW CLASSIFICATION: High Output
STAGES: 1 Stage

TEMPERATURE

OPERATING TEMP: 0°C to 50°C
STORAGE TEMP: -40°C to 85°C

ELECTRICAL

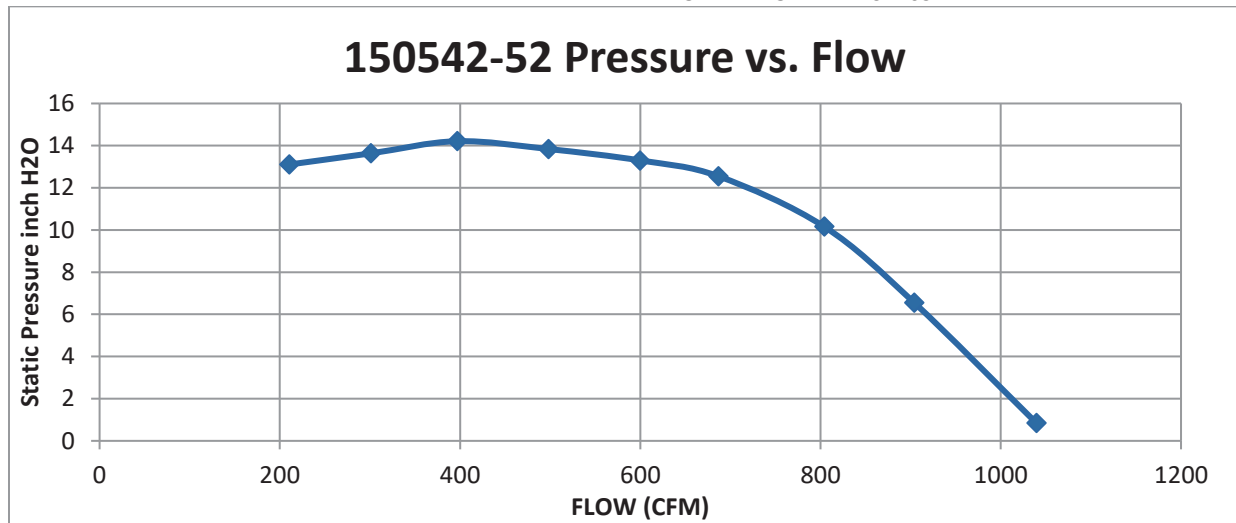
INPUT VOLTAGE RANGE: 208-264VAC
INPUT VOLTAGE: 240VAC, 1 Φ

OPTIONAL FEATURES

SPEED CONTROL: PWM, Pull Down, closed loop
OTHER: 3-Pin Power Port; 5-Pin Control Port
 6X0.27"-6H x 0.48" (12.07mm) deep tapped hole on Inlet flange
 Custom Programming

REGULATORY CERTIFICATIONS

COMPLIANCE: RoHS and Reach compliant
UL FILE NUMBER: E94403

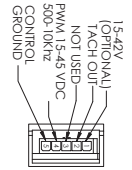


Flow Rate <i>cfm</i>	Static Pressure <i>inch H2O</i>	Current <i>A</i>	Power Demand <i>W</i>	Voltage <i>V</i>	Flow Temp. <i>°C</i>	Rotational Speed <i>rpm</i>	Static Efficiency <i>%</i>
1039.47	0.85	16.14	2489.47	240.02	23.06	6510	4.17
904.07	6.55	15.44	2356.45	240.66	23.60	6780	29.71
804.10	10.16	14.88	2259.65	240.50	24.03	7020	42.80
686.80	12.55	13.25	2016.22	241.13	24.35	7170	50.64
599.81	13.30	11.90	1777.53	240.98	24.50	7170	53.20
498.11	13.84	10.11	1513.09	241.52	24.61	7140	54.02
396.89	14.21	8.81	1276.44	241.81	24.99	7170	52.45
301.09	13.63	7.42	1044.33	242.34	25.07	7080	45.98
210.38	13.11	6.47	865.12	242.32	25.14	7170	37.84

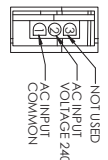
DESIGN APPLICATION: Designed to provide variable airflow for low NOx and CO emission in high efficiency gas fired combustion systems. Built with non-sparking materials. Blower housing assembly constructed of die cast aluminum. Impeller constructed from hardened aluminum. Rubber isolation mounts built into blower construction to dampen vibration within the motor. Two-piece blower housing assembly sealed, and factory leak checked. Customer is responsible to check for any leakage once the blower is installed into the final application.

MISCELLANEOUS: Motor cooling inlet and discharge vents must not be obstructed. Motor ventilation air to be free of oils and other foreign particles. Blower is to be mounted so ventilation air cannot be re-circulated.

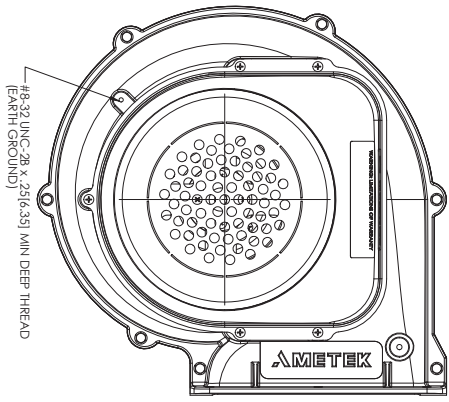
- NOTES:
1. ROHS AND REACH COMPLIANCE. REFERENCE AMETEK ENVIRONMENTAL SPECIFICATION ES0010 FOR DETAILS.
 2. POWER/SPEED CONTROL PORT MATES WITH:
 3. AMP HOUSING - 350766-1
 4. CONTACT SOCKETS - 350536-1
 5. SPEED CONTROL PORT:
 6. MOLEX HOUSING: 39-00-0039 18-24 AWG; 39-00-0078 16 AWG
 7. CONTACT: 39-00-0039 18-24 AWG; 39-00-0078 16 AWG
 8. ALL INTAKE, EXHAUST, COOLING DUCTS AND VENTS MUST NOT BE OBSTRUCTED BY MOUNTING.
 9. MOTOR VENTILATION AIR TO BE FREE OF OILS AND OTHER FOREIGN PARTICLES, (I.E. BREATHING QUALITY AIR). BLOWER TO BE MOUNTED SO THAT MOTOR VENTILATION AIR CANNOT RECIRCULATE.
 10. SUBJECT TO CHANGE WITHOUT NOTICE. CONTACT FACTORY FOR CURRENT REVISION.
 11. TACH OUTPUT-2 PULSES PER REVOLUTION. SIGNAL IS A FREQUENCY (HZ) INDICATOR OF THE RPM CAN BE MEASURED WITH RESPECT TO GROUND (PIN 5). RPM=TACH. OUT X 30.



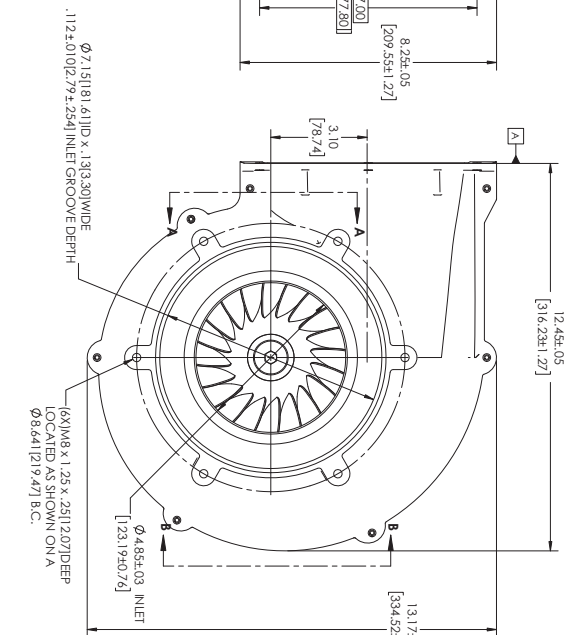
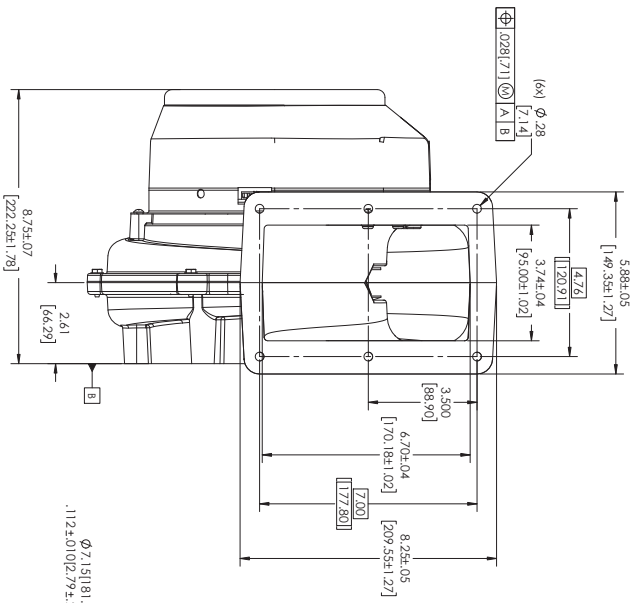
SECTION A-A
CONTROL PORT
SCALE 1 : 1



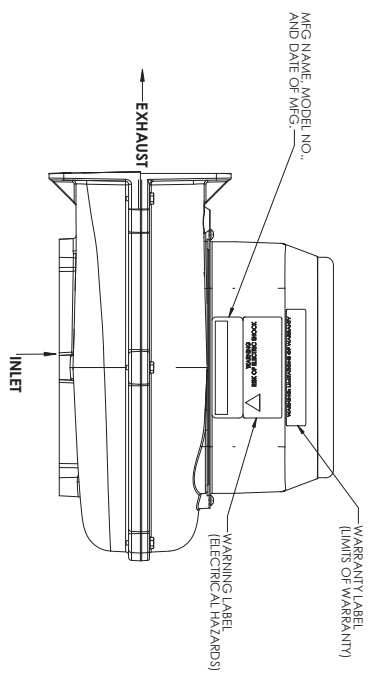
SECTION B-B
POWER PORT
SCALE 1 : 1



Ø112.0102 (Ø INLET GROOVE DEPTH)
Ø8.32 UNC-2B X .2516 (39) MIN DEEP THREAD (Ø INLET GROOVE)



Ø7.151181 (Ø) ID X .1319 (30) WIDE
Ø8.641121 (9.47) B.C.
Ø4.85±.03 INLET
Ø112.0102 (Ø INLET GROOVE DEPTH)



REV	REVISIONS	DATE	APP'D
B	104880	1-28-13	KD
C	108288	8-18-15	KD
D	DE #1349	9-22-18	MH

150542-52-0

AMETEK
TECHNICAL DRAWING

CONTROL CHARACTERISTICS WITH M199M/A/L/D/R
REF ENG SPEC K-1

THIS PRINT AND THE SPECIFICATIONS ARE THE PROPERTY OF AMETEK. TECHNICAL & INDUSTRIAL PRODUCTS AND HAS BEEN REPRODUCED, REVEALED TO OR USED FOR THE MANUFACTURE OF OTHER DEVICES AND WILL BE RETURNED UPON REQUEST. ALL DIMENSIONS ARE UNLESS OTHERWISE SPECIFIED.

DO NOT SCALE DRAWING

DATE: 9-27-12
BY: [Signature]

SCALE: 1:1

DESCRIPTION: N13.3 240V PWM W/O FLANGE SFC SPD BLOWER OUTLINE

REV: D

150542-52-0