

Nautilair[®]

7.6" 120VAC 1Ø Combustion Blower - High Output

Model: 150145-59

MECHANICAL

DIAMETER: 7.6" (193mm)
DISCHARGE TYPE: Tangential
DISCHARGE: : Small Flange
APPROXIMATE WEIGHT: 4.8lbs

PERFORMANCE

FLOW CLASSIFICATION: High Output
STAGES: 1 Stage

TEMPERATURE

OPERATING TEMP: 0°C to 50°C
STORAGE TEMP: -40°C to 85°C

ELECTRICAL

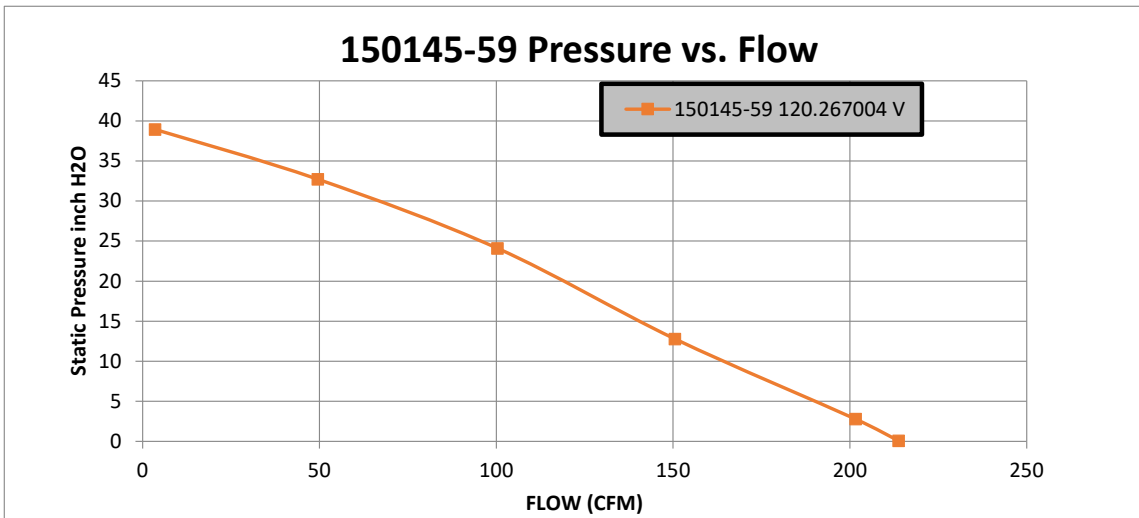
OPERATING INPUT VOLTAGE RANGE: 108-132VAC
OPERATING INPUT VOLTAGE: 120 VAC

FEATURES

SPEED CONTROL: 5-Pin PWM Connector, Electrical Speed Control, 3-Pin Power Connector, Closed Loop

REGULATORY CERTIFICATIONS

COMPLIANCE: RoHS and Reach
UL FILE NUMBER: E94403
AGENCY FULL LOAD AMPS: 10



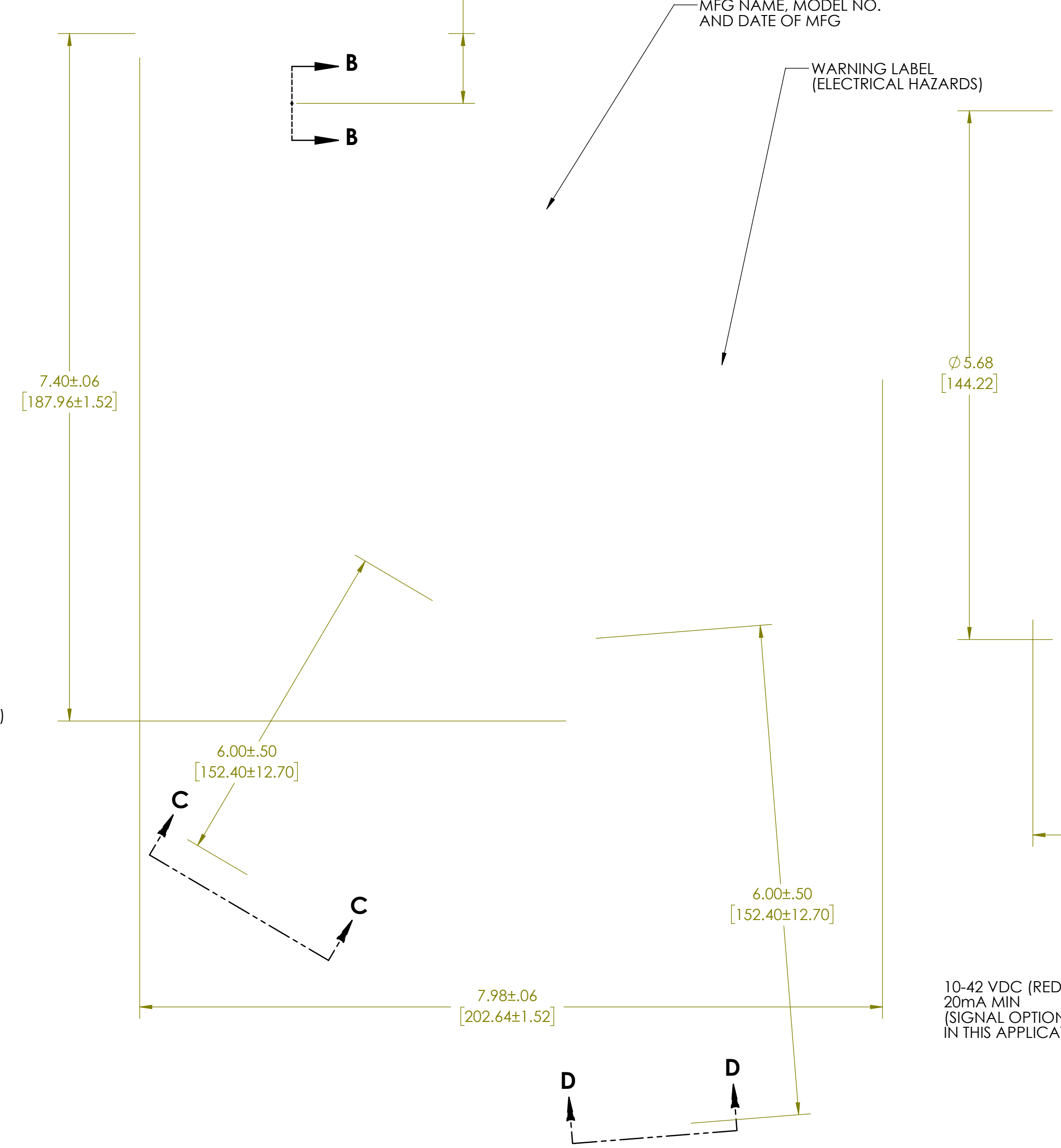
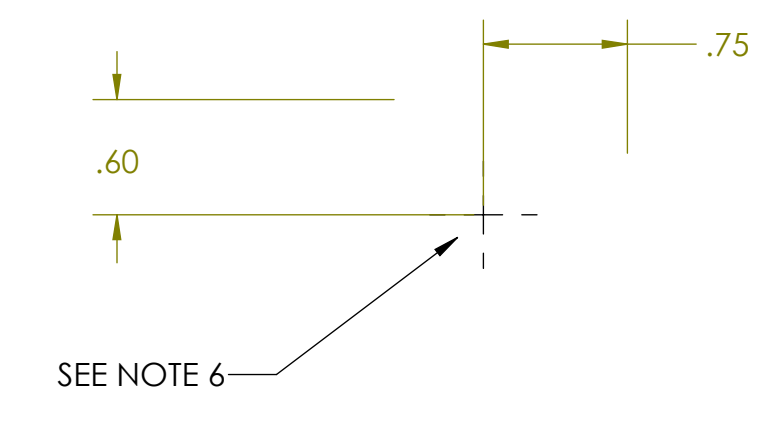
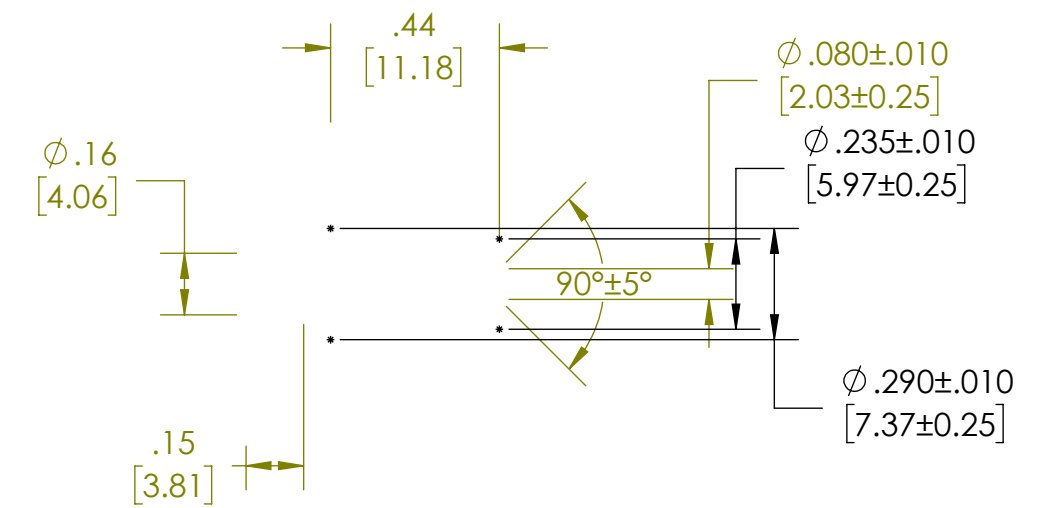
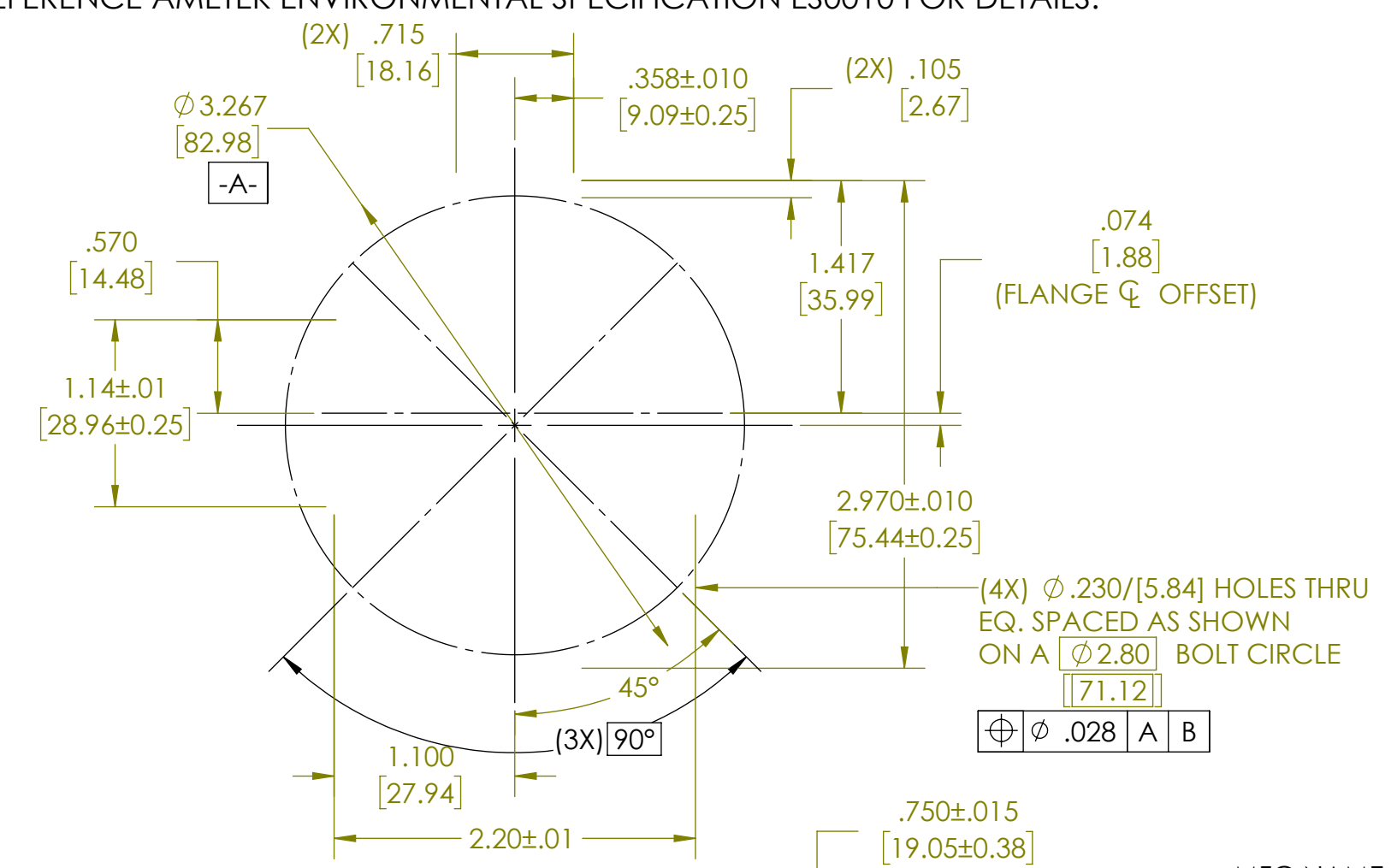
Flow Rate <i>cfm</i>	Static Pressure <i>inch H2O</i>	Total Pressure <i>inch H2O</i>	Current <i>A</i>	Power Demand <i>W</i>	Voltage <i>V</i>	Flow Temp. <i>°C</i>	Rotational Speed <i>rpm</i>	Static Efficiency <i>%</i>	Total Efficiency <i>%</i>
213.75	0.07	0.44	10.13	878.35	120.27	24.43	9630	0.21	1.28
201.60	2.78	3.11	10.16	878.22	120.26	24.46	9720	7.57	8.47
150.47	12.80	12.98	10.12	881.19	120.26	25.28	10350	25.96	26.33
100.30	24.10	24.19	10.05	887.62	120.25	26.90	11610	32.49	32.60
49.56	32.71	32.73	9.55	842.90	120.29	28.81	13080	23.06	23.07
3.47	38.94	38.94	7.94	664.36	120.48	26.27	13980	2.42	2.42

Performance data is for reference only.

NOTES:

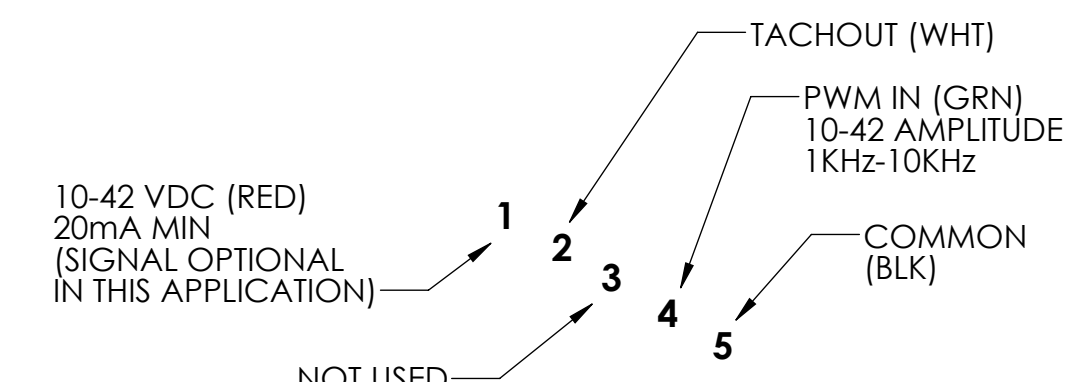
- ALL INTAKE, EXHAUST, COOLING DUCTS AND VENTS MUST NOT BE OBSTRUCTED BY MOUNTING.
- MOTOR VENTILATION AIR TO BE FREE OF OILS AND OTHER FOREIGN PARTICLES. (I.E. BREATHING AIR QUALITY) MOTOR TO BE MOUNTED SO THAT MOTOR VENTILATION AIR CANNOT RECIRCULATE.
- POWER CONNECTION:** BLOWER CONNECTOR, AMP UNIVERSAL MATE-N-LOK (PN# 350767-1) MATES WITH CUSTOMER SUPPLIED AMP CONNECTOR, (PN# 350766-1) USING FEMALE TERMINALS, PN# 350536-3 OR EQUIVALENT WITH THE FOLLOWING WIRE SPECIFICATIONS:
BLACK AND WHITE WIRES: 16GA. WIRE, 600V, 105°C.
GREEN/YELLOW WIRE: 18GA. WIRE, 600V, 105°C.
- CONTROL CONNECTION:** BLOWER CONNECTOR, MOLEX SERIES 5559 (PN# 39-01-4057) MATES WITH CUSTOMER SUPPLIED MOLEX SERIES 5557 CONNECTOR HOUSING, (PN#39-01-4051) WITH FEMALE TERMINALS, (PN# 39-00-0208) OR EQUIVALENT ON 300V, 125°C 22GA. WIRE.
- TACH OUTPUT-2 PULSES PER REVOLUTION. SIGNAL IS A FREQUENCY (Hz) INDICATOR OF THE RPM CAN BE MEASURED WITH RESPECT TO GROUND LEAD (BLACK WIRE). RPM=TACH. OUT x 30.
- 1/8" NPT BRASS PIPE PLUG, 3/16 HEX DRIVE, MCMaster CARR PN# 50785K112, AMETEK PN# 15-4006, INSTALLED AND PRESSURE TESTED FOR LEAKS USING RECTORSEAL T + 2 SEALANT TORQUE SEALANT ADDED TO PLUG.
- ROHS AND REACH COMPLIANCE, REFERENCE AMETEK ENVIRONMENTAL SPECIFICATION ES0010 FOR DETAILS.

REVISIONS				
REV	ECN NO.	CHANGE	DATE	APP'D
A	DMR #625	RELEASED TO PRODUCTION. MH	10-31-19	JL
B	DE #4096	UPDATE DESCRIPTION 120V WAS 100-240V	3-15-22	MH



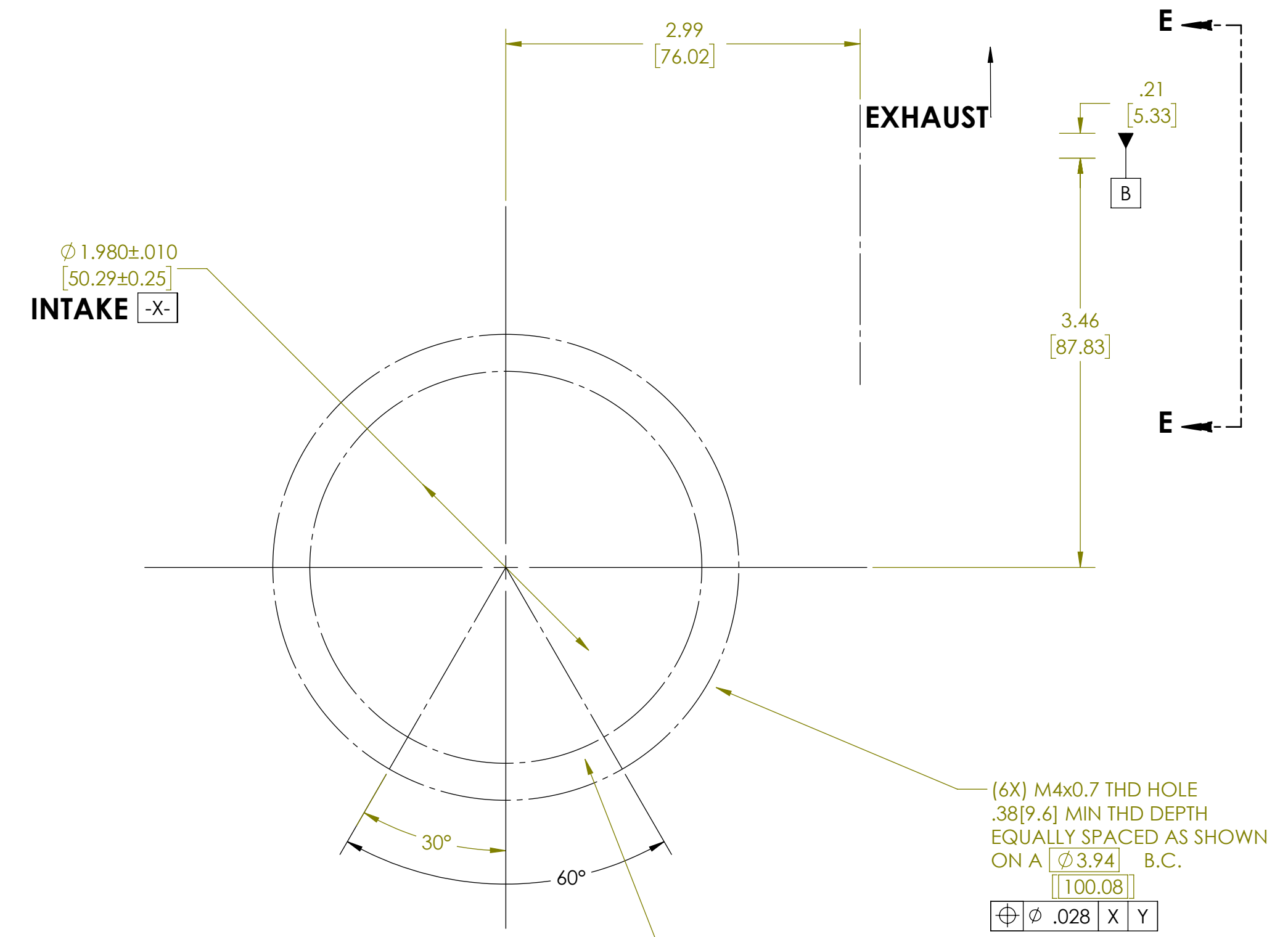
MOTOR VENTILATION EXHAUST
SEE NOTES 1 & 2

MOTOR VENTILATION AIR INTAKE
SEE NOTES 1 & 2



VIEW C-C SCALE 2:1
SEE NOTE 4

VIEW D-D SCALE 2:1
SEE NOTE 3



INTAKE [-X-]

CONTROL CHARACTERISTICS M101-M199=MAJOR REF. ENG. SPEC. K-1 SW

CONFIDENTIAL

THIS PRINT AND THE SPECIFICATIONS ARE THE PROPERTY OF AMETEK, TECHNICAL & INDUSTRIAL PRODUCTS, AND HAS BEEN ISSUED WITH THE UNDERSTANDING THAT IT WILL NOT BE REPRODUCED, REVEALED TO OR USED FOR THE MANUFACTURE FOR OTHERS AND WILL BE RETURNED UPON REQUEST.

DIMENSIONING AND TOLERANCING IN ACCORDANCE WITH ANSI Y14.5M-1982
DO NOT SCALE DRAWING

UNLESS OTHERWISE SPECIFIED		TOLERANCES	
REMOVE BURRS	BREAK SHARP EDGES .005/.020	XX	XXX
		ANGLES	
		±.02	.005 ±0° 30'

MATERIAL: -

SCALE: 1:1	CODE: 75511	FINISH SPEC: -
CAD FILE NAME: -	NEXT ASSY: -	WTL: -
ENG. APP'D: K. DIEHL	DATE: 10-31-19	APP'D: - DATE: -
DRAWN BY: M. HELMINK	DATE: 10-31-19	CHD BY: - DATE: -

TITLE: **7.6" 120V PRE-MIX NAUTILAIR BLOWER OUTLINE (SMALL FLANGE)** SHEET 1 OF 1

AMETEK TECHNICAL INDUSTRIAL PRODUCTS REF. 150145-56-0 DWG NO. **150145-59-0**