

NAUTILAIR

150143-61

MECHANICAL

DIAMETER: 7.6" (193mm)
DISCHARGE TYPE: Tangential
DISCHARGE: Small Flange
APPROXIMATE WEIGHT: 4.8lbs/2.2kg

PERFORMANCE

FLOW CLASSIFICATION: Standard Output enhanced
STAGES: 1 Stage

TEMPERATURE

OPERATING TEMP: 0°C to 50°C
STORAGE TEMP: -40°C to 85°C

ELECTRICAL

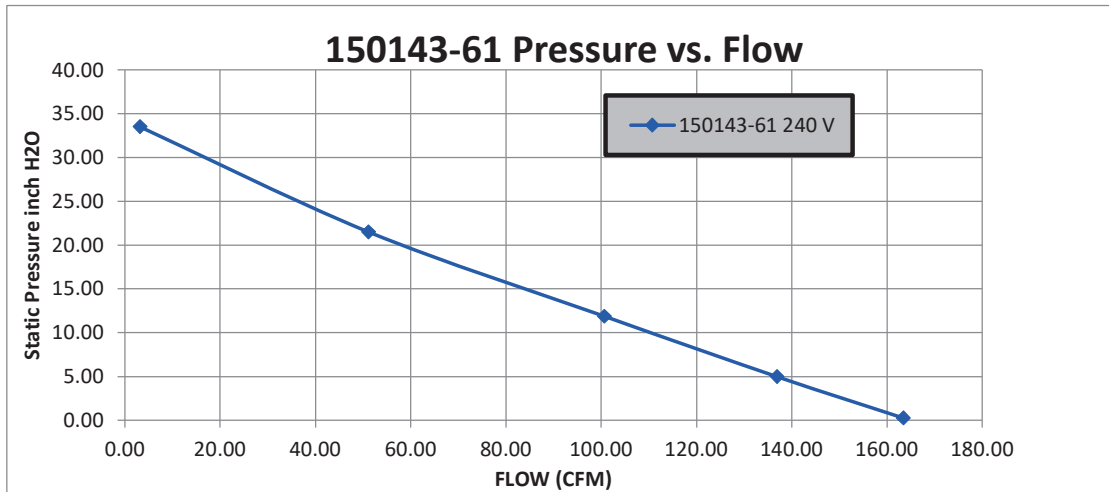
OPERATING INPUT VOLTAGE RANGE: 180-264v
OPERATING INPUT VOLTAGE: 240v

FEATURES

SPEED CONTROL: 5-Pin Control Connector, Electrical Speed Control, 5-Pin Power/0-10v dc Connector, Closed Loop

REGULATORY CERTIFICATIONS

COMPLIANCE: RoHS and Reach
UL FILE NUMBER: E94403
AGENCY FULL LOAD AMPS: 3A



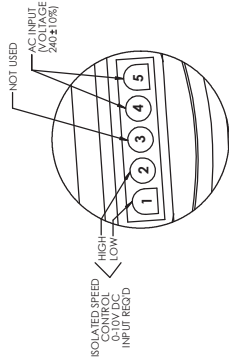
Flow Rate <i>cfm</i>	Static Pressure <i>inch H2O</i>	Total Pressure <i>inch H2O</i>	Current <i>A</i>	Power Demand <i>W</i>	Voltage <i>V</i>	Flow Temp. <i>°C</i>	Rotational Speed <i>rpm</i>	Static Efficiency <i>%</i>	Total Efficiency <i>%</i>
163.41	0.28	0.49	3.24	398.84	240.48	23.0	7890	1.33	2.39
136.93	4.97	5.12	3.19	387.65	240.48	24.0	8040	20.78	21.43
100.64	11.88	11.96	3.14	380.60	240.48	24.5	8750	37.23	37.49
51.16	21.50	21.52	3.15	383.98	240.49	25.8	10480	34.07	34.10
3.18	33.52	33.52	3.08	378.42	240.50	23.8	12880	3.34	3.34

WARNING Performance Data is for reference only

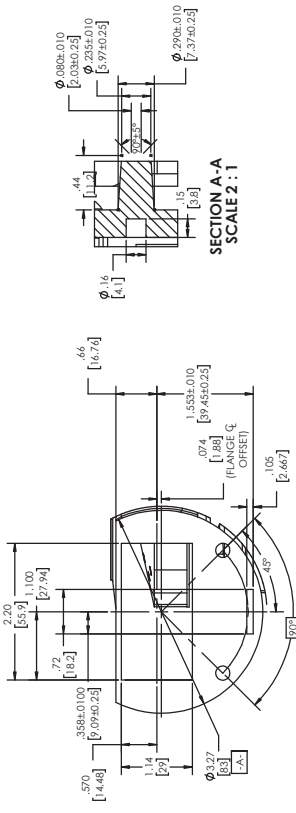
1. ALL INTAKE, EXHAUST, COOLING DUCTS AND VENTS MUST NOT BE OBSTRUCTED BY MOUNTING.
2. MOTOR VENTILATION AIR TO BE FREE OF OILS AND OTHER FOREIGN PARTICLES, (I.E. BREATHING QUALITY AIR). MOTOR TO BE MOUNTED SO THAT MOTOR VENTILATION AIR CANNOT RECIRCULATE.
3. **GROUND LEAD:** GREEN/YELLOW LEAD; FULLY INSULATED FEMALE TERMINAL AMP PN# 2-520405-2 ON 18 GA. 1015 UL STYLE 105°C RATED WIRE.
4. **POWER CONNECTION:** BLOWER CONNECTOR AMP CONNECTOR PN#6400900-1 MATES WITH CUSTOMER SUPPLIED AMP MATE-N-LOK PLUG CONNECTOR PN# 350809-1 USING UNIVERSAL MATE-N-LOK SOCKET TERMINALS ON 16GA WIRE.
5. **CONTROL CONNECTION:** BLOWER CONNECTOR MOLEX CONNECTOR PN# 26-60-7050 CONNECTS WITH CUSTOMER SUPPLIED CONNECTOR MOLEX SERIES 41695 OR EQUIVALENT, USING CRIMP TERMINALS ON 20GA WIRE.
6. TACH OUTPUT-2 PULSES PER REVOLUTION, SIGNAL IS A FREQUENCY (HZ) INDICATOR OF THE RPM.
7. CAN BE MEASURED WITH RESPECT TO GROUND LEAD (BLACK WIRE). RPM=TACH. OUT X 30.
8. ROHS AND REACH COMPLIANCE. REFERENCE AMETEK ENVIRONMENTAL SPECIFICATION ES0010 FOR DETAILS.

THIS PRODUCT HAS BEEN TESTED AND VALIDATED TO BE ACCEPTABLE IN OUR APPLICATION.

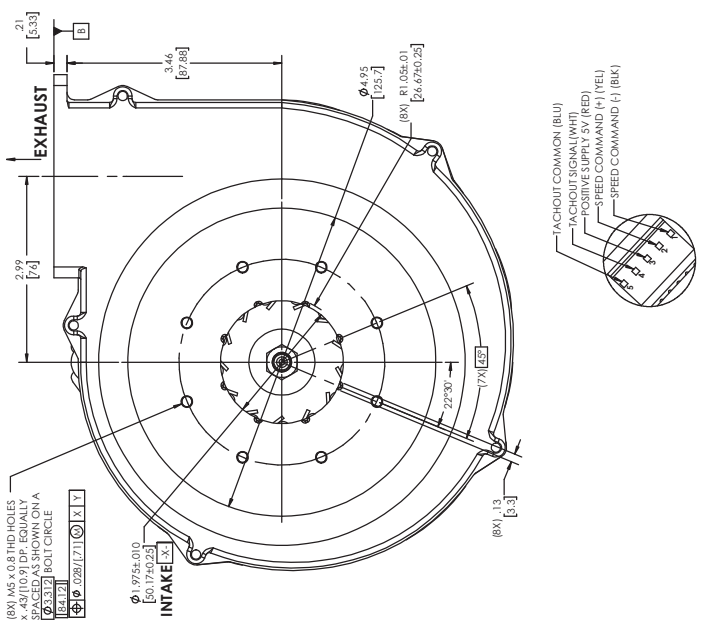
APPROVED BY: _____
 PRINT NAME: _____
 TITLE: _____
 DATE: _____
 COMPANY: _____



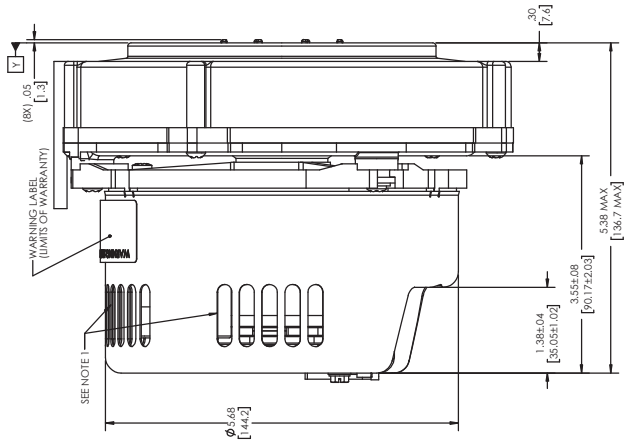
NOT USED



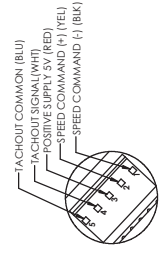
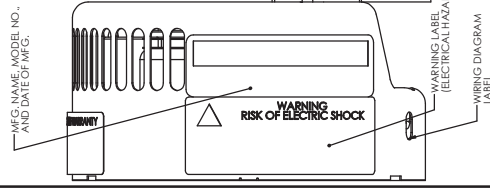
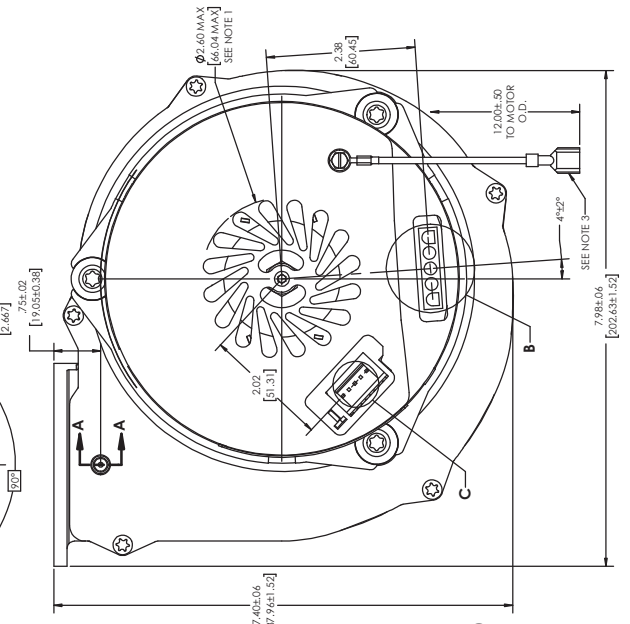
SECTION A-A
SCALE 2 : 1



DETAIL B
SCALE 2 : 1



DETAIL C
SCALE 2 : 1



DETAIL C
SCALE 2 : 1