

**A10 Bulkhead mounted h., IP65**

Single locking lever m.

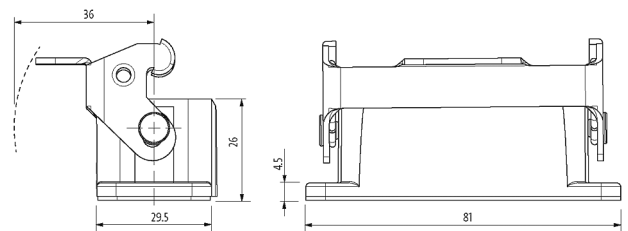
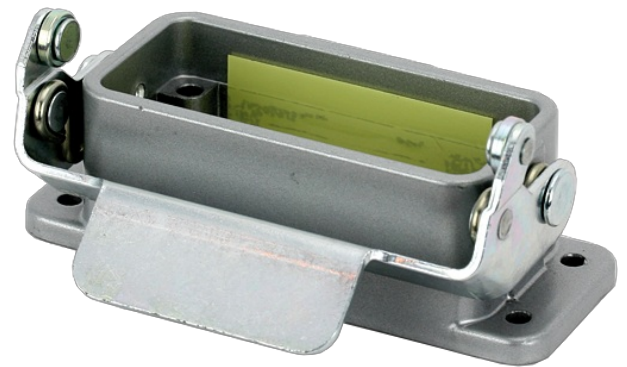
A10

Bulkhead mounted housing

Single locking lever

IP65

Technical data will be only guaranteed with Murrelektronik components.

**[Link to Product](#)****Illustration**

Product may differ from Image

**General data**

Housing type	Bulkhead mounted housing
Size	A10
Dimensions H×W×D	26×29.5×81 mm
Material (housing)	Aluminum die-cast
Material (housing surface)	powder-coated
Locking material	Steel (galvanized)
Material (gasket)	NBR
Climatic category	40/100/21 (EN 60068-1)
Temperature range	-40...+100 °C

**Technical Data**

Locking of ports	Single locking lever
Protection (housing)	IP65 inserted and tightened (EN 60529)
Mating cycles	min. 500

**Commercial data**

country of origin	CZ
customs tariff number	85389099

EAN	4048879643030
eClass	27143424
Packaging unit	1