

**B24 male 10+2-pole, Push-in, 800/500 V, 16 A**

B24

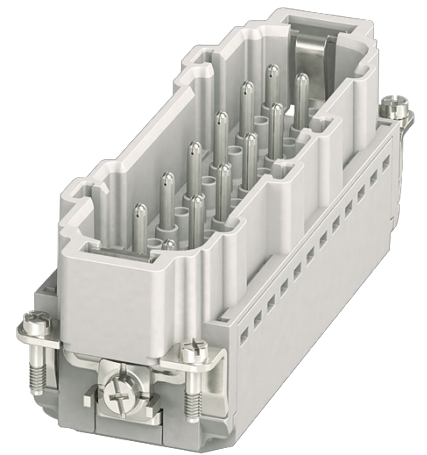
Male

10+2-pole

Push-In terminals

Technical data will be only guaranteed with Murrelektronik components.

Please use wire end ferrule.

[Link to Product](#)**Illustration**

Product may differ from Image

**Approvals****General data**

Type	Male
Size	B24
Pollution Degree	3
Dimensions H×W×D	37×34×110.3 mm
Material (contact carrier)	PA
Material (contact)	Brass
Material (contact surface)	Ag
Flammability class	V-0 (acc. to UL 94)
Temperature range	-40...+125 °C

**Technical Data**

No. of poles	10 + 2 + PE
Connection	Push-In terminals
Connection cross section	0.14...2.5 mm <sup>2</sup> (AWG 26...13)
Stripping length	8...10 mm
Operating voltage	830/500 V AC/DC
Operating current	16 A

Over voltage category	III
Rated surge voltage	8.0/6.0 kV
Current load capacity	see derating curve
Mating cycles	min. 500

**Commercial data**

country of origin	CN
customs tariff number	85389099
EAN	4048879665087
eClass	27143424
Packaging unit	1