

**A10 female 10-pole, screw t., 250 V, 16 A**

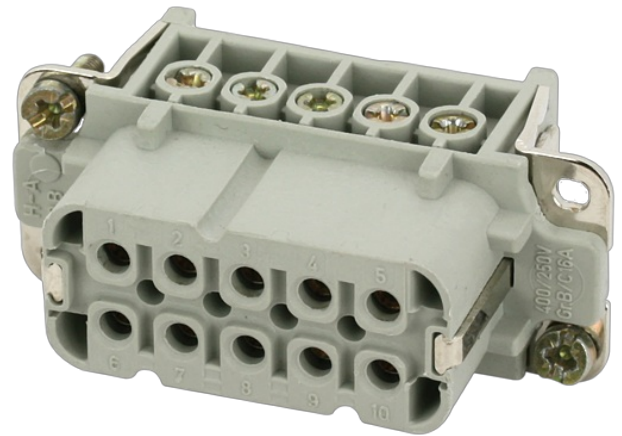
A10

Female

10-pole

Screw terminal

Technical data will be only guaranteed with Murrelektronik components.

[Link to Product](#)**Illustration**

Product may differ from Image

**Approvals****General data**

Type	Female
Size	A10
Pollution Degree	3
Dimensions H×W×D	33.2×23×55.5 mm
Material (contact carrier)	PA GF
Material (contact)	Brass
Material (contact surface)	Ag
Flammability class	V-0 (acc. to UL 94)
Climatic category	40/125/21
Temperature range	-40...+125 °C

**Technical Data**

No. of poles	10 + PE
Connection	Screw terminal
Connection cross section	0.5...2.5 mm <sup>2</sup> (AWG 20...14)
Wire-Ø incl. isolation	max. 4.6 mm
Stripping length	7.8 mm
Operating voltage	250 V AC/DC
Operating current	16 A

Over voltage category	III
Material group	IIIb
Rated surge voltage	4.0 kV
Current load capacity	see derating curve
Contact resistance	$\leq 5 \text{ m}\Omega$
Isolation resistance	$\geq 10^8 \Omega$
Mating cycles	min. 500
Insertion and withdrawal force	$< 180 \text{ N}$
Holding force	$> 150 \text{ N}$
Tightening torque (clamp screw)	min. 0.4 Nm
Pull-out force	min. 50 N

**Commercial data**

country of origin	CZ
customs tariff number	85366990
EAN	4048879637800
eClass	27143424
Packaging unit	1