

MSUD valve plug form BI 11mm with cable

PVC 3x0.75 gy 1,5m

MSUD

Form BI (11 mm)

110 V AC/DC $\pm 10\%$

LED and suppressor

PE opposite cable entry (180°)

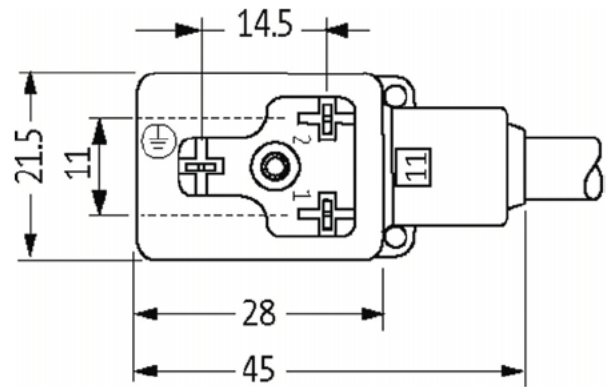
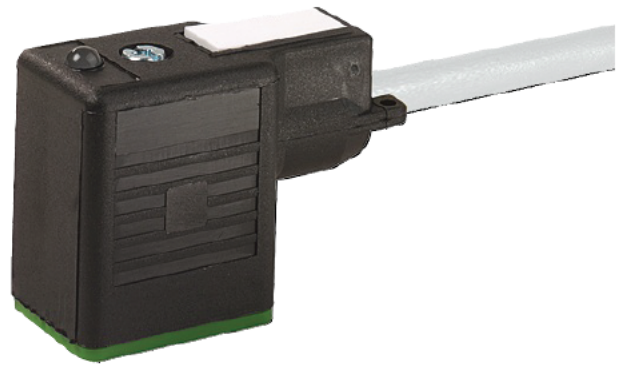
Further cable lengths on request.

Past housings with good resistance against chemicals and oils.

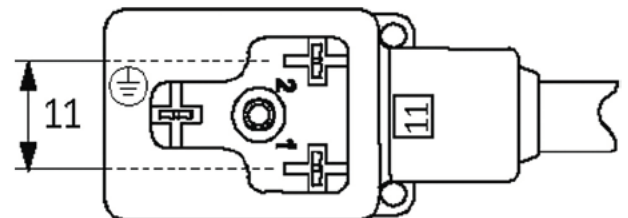
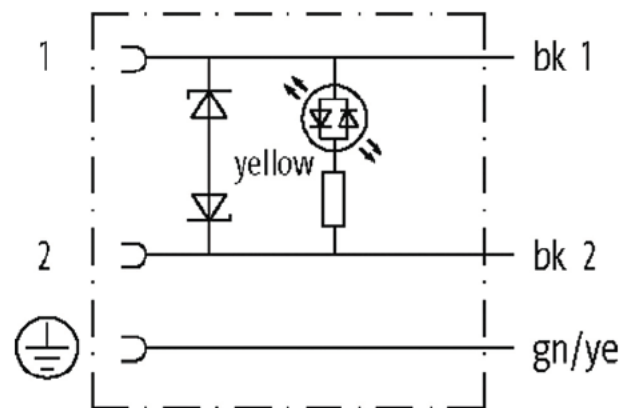
The resistance to aggressive media should be individually tested for your application. Further details on request.

[Link to Product](#)

Illustration



Height: 30 mm



Product may differ from image

Approvals

**Form**

Form 4

General data

Temperature range 25 +85 °C depending on cable quality

Cables

No /diameter of wires	3 × 0.75 mm ²
Wire isolation	PVC (bk num gnye)
Material (jacket)	PVC
Outer Ø	5.9 mm 5%
Bend radius (moving)	0 × outer Ø
Temperature range (fixed)	30 +70 °C
Temperature range (mobile)	5 +70 °C
Cable identification	2 6
Cable Type	(PVC)
Approval (cable)	CE conform
Cable weight [g/m]	63.80
Material (wire)	Cu wire bare
Resistor (core)	max 26 Ω/km (20 °C)
Single wire Ø (core)	0.2 mm
Construction (core)	24 × 0.2 mm (multi strand wire class 5)
Diameter (core)	3 × 0.75 mm ²
AWG	similar to AWG 8
Material (wire isolation)	PVC
Material property (wire isolation)	CFC cadmium silicone and lead free
Shore hardness (wire isolation)	43 5 D
Wire Ø incl isolation	8 mm 5%
Color/numbering of wires	bk numbered gnye longitudinally striped
Stranding combination	3 wires twisted
Shield	no
Material (jacket)	PVC
Material property (jacket)	CFC cadmium silicone and lead free
Shore hardness (jacket)	80 5 A
Outer Ø (jacket)	5.9 mm 5%
Color (jacket)	gray
chemical resistance	good resistance to oil gasoline and chemicals
Nominal voltage	300/500 V AC
Test voltage	3000 V AC
Current load capacity	to D N VDE 0298 4
Temperature range (fixed)	30 +70 °C
Temperature range (mobile)	5 +70 °C
Bend radius (fixed)	5 × outer Ø
Bend radius (moving)	0 × outer Ø
Jacket Color	gray

Technical Data

Operating voltage	0 V AC/DC 0%
Operating current per contact	max 4 A
Switch off peak	max 250 V
Switch off delay time	max 20 ms
Locking of ports	M3 (recommended torque 0.4 Nm)
Housing	Black plastic (gray on request)
Protection	P66K P67 inserted and tightened (EN 60529)
Commercial data	
country of origin	CZ
customs tariff number	85444290
EAN	40488797275 8
eClass	272792 8
Packaging unit	