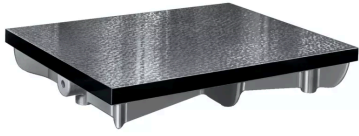


Cast Iron Surface Plate, DIN

876

Item number: 902-306

Images



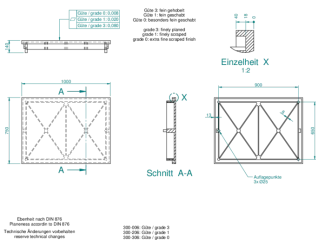
Description

- A ribbed design gives you rigidity with minimum weight, and a special cast iron confers a high degree of wear resistance.

Features

| | |
|------------------------------|--|
| Dimensions L x W x H: | 1000 x 750 x 170 mm |
| Accuracy: | According to DIN 876; Grade 1 : fine scraped |
| Mass: | 210 kg |

Dimensions



Accessories

Optional accessories:



Stand (Angle Steel)

for Cast Iron Plate 1000x750x170mm

Art No. 902-931

Price on application