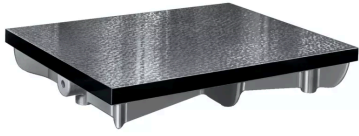


## Cast Iron Surface Plate, DIN

### 876

Item number: 902-301

#### Images



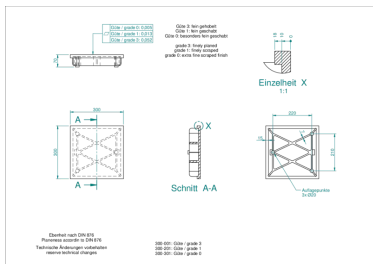
#### Description

- A ribbed design gives you rigidity with minimum weight, and a special cast iron confers a high degree of wear resistance.

#### Features

<b>Dimensions L x W x H:</b>	300 x 300 x 85 mm
<b>Accuracy:</b>	According to DIN 876; Grade 1 : fine scraped
<b>Mass:</b>	15 kg

#### Dimensions



#### Accessories

##### Optional accessories:



#### Stand (Angle Steel)

for Cast Iron Plate 800x500x140mm

Art No. 902-930

**Price on application**



### **Stand (Angle Steel)**

for Cast Iron Plate 1000x750x170mm

Art No. 902-931

**Price on application**