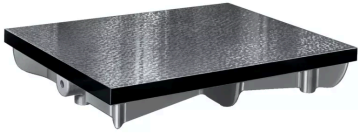


Cast Iron Surface Plate, DIN

876

Item number: 902-103

Images



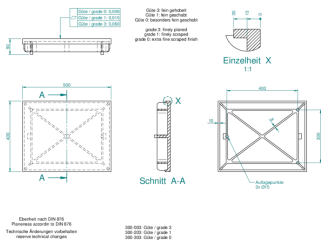
Description

- A ribbed design gives you rigidity with minimum weight, and a special cast iron confers a high degree of wear resistance.

Features

Dimensions L x W x H:	500 x 400 x 100 mm
Accuracy:	According to DIN 876; Grade 3 : fine planed
Mass:	40 kg

Dimensions



Accessories

Optional accessories:



Stand (Angle Steel)

for Cast Iron Plate 800x500x140mm

Art No. 902-930

Price on application



Stand (Angle Steel)

for Cast Iron Plate 1000x750x170mm

Art No. 902-931

Price on application