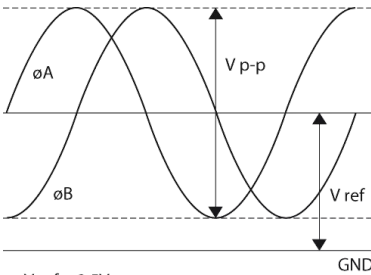


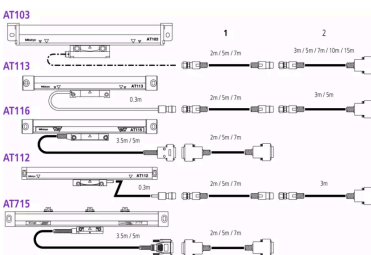
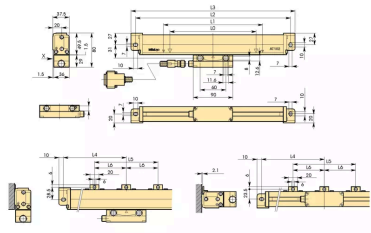
Linear Scale AT103

Item number: 539-141-30

Images



$V_{ref} \approx 2.5V$
 $V_{p-p} = 2V$



Description

These linear scales offer : Sturdy construction-high resistance to vibration-protection rating are similar in upright and reclining position

- The innovative rubber lips keep out contaminants when you are using the scale in a machine shop.
- An armoured signal cable is used to connect the scale unit to the DRO counter, so you can operate it safely even in hostile environments.
- The signal cable outlet can be positioned on either side of the slider so you can connect the signal cable from either direction.

Features

| | |
|-------------------------------------|---|
| Model: | AT103-2800 |
| Accuracy: | 100 to 3000 mm (5+5L/1000) μ m 3250 to 6000 mm (5+8L/1000) μ m L = Effective range (mm) |
| Output waveform: | Two 90° phase-shifted sinusoidal signals |
| Max. drive speed: | 120 m/min. |
| Signal period: | 20 μ m |
| Scale reference points: | every 50 mm |
| Dust/water protection level: | IP53 |
| Cable length: | 7 m |
| Effective Length: | 2800 mm |
| Mass: | 7.9 kg |

Accessories

Optional accessories:



Extension Cable 2M

Art No. 09AAA033A
Suggested retail price: 242.00 €*
*



Extension Cable 5M

Art No. 09AAA033B
Suggested retail price: 333.00 €*
*



Extension Cable 7M

Art No. 09AAA033C
Suggested retail price: 384.00 €*
*



Linear Scale Counter KA-212

Art No. 174-183D

Suggested retail price: 650.00 €*



Linear Scale Counter KA-213

Art No. 174-185D

Suggested retail price: 782.00 €*
