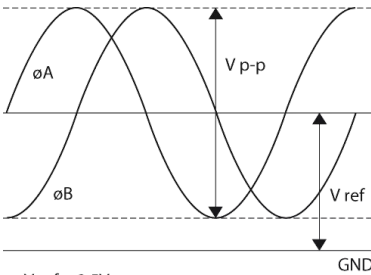


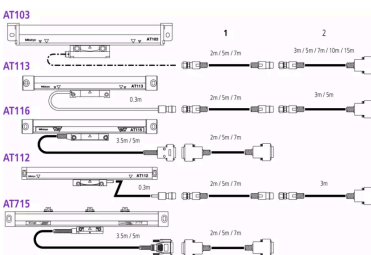
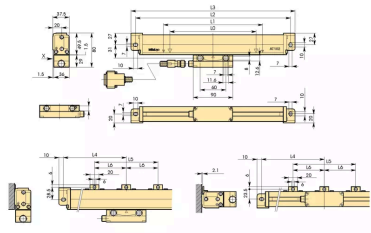
## Linear Scale AT103

Item number: 539-140-30

### Images



GND



### Description

These linear scales offer : Sturdy construction-high resistance to vibration-protection rating are similar in upright and reclining position

- The innovative rubber lips keep out contaminants when you are using the scale in a machine shop.
- An armoured signal cable is used to connect the scale unit to the DRO counter, so you can operate it safely even in hostile environments.
- The signal cable outlet can be positioned on either side of the slider so you can connect the signal cable from either direction.

## Features

<b>Model:</b>	AT103-2600
<b>Accuracy:</b>	100 to 3000 mm (5+5L/1000) $\mu$ m 3250 to 6000 mm (5+8L/1000) $\mu$ m L = Effective range (mm)
<b>Output waveform:</b>	Two 90° phase-shifted sinusoidal signals
<b>Max. drive speed:</b>	120 m/min.
<b>Signal period:</b>	20 $\mu$ m
<b>Scale reference points:</b>	every 50 mm
<b>Dust/water protection level:</b>	IP53
<b>Cable length:</b>	7 m
<b>Effective Length:</b>	2600 mm
<b>Mass:</b>	7.5 kg

## Accessories

### Optional accessories:



#### Extension Cable 2M

Art No. 09AAA033A  
Suggested retail price: 242.00 €\*



#### Extension Cable 5M

Art No. 09AAA033B  
Suggested retail price: 333.00 €\*



#### Extension Cable 7M

Art No. 09AAA033C  
Suggested retail price: 384.00 €\*



## Linear Scale Counter KA-212

Art No. 174-183D

Suggested retail price: 650.00 €\*  

---



## Linear Scale Counter KA-213

Art No. 174-185D

Suggested retail price: 782.00 €\*  

---