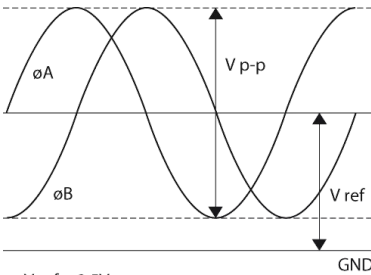


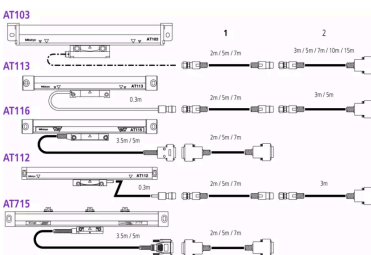
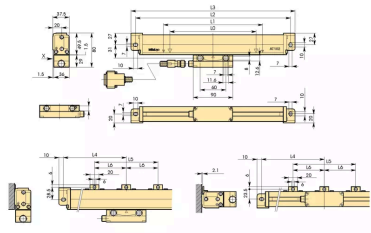
Linear Scale AT103

Item number: 539-133-30

Images



$V_{ref} \approx 2.5V$
 $V_{p-p} = 2V$



Description

These linear scales offer : Sturdy construction-high resistance to vibration-protection rating are similar in upright and reclining position

- The innovative rubber lips keep out contaminants when you are using the scale in a machine shop.
- An armoured signal cable is used to connect the scale unit to the DRO counter, so you can operate it safely even in hostile environments.
- The signal cable outlet can be positioned on either side of the slider so you can connect the signal cable from either direction.

Features

Model:	AT103-1600
Accuracy:	100 to 3000 mm (5+5L/1000) μ m 3250 to 6000 mm (5+8L/1000) μ m L = Effective range (mm)
Output waveform:	Two 90° phase-shifted sinusoidal signals
Max. drive speed:	120 m/min.
Signal period:	20 μ m
Scale reference points:	every 50 mm
Dust/water protection level:	IP53
Cable length:	5 m
Effective Length:	1600 mm
Mass:	5.1 kg

Accessories

Optional accessories:



Extension Cable 2M

Art No. 09AAA033A
Suggested retail price: 242.00 €*
Photo Not Available

Extension Cable 5M

Art No. 09AAA033B
Suggested retail price: 333.00 €*
Photo Not Available

Extension Cable 7M

Art No. 09AAA033C
Suggested retail price: 384.00 €*
Photo Not Available



Linear Scale Counter KA-212

Art No. 174-183D

Suggested retail price: 650.00 €*



Linear Scale Counter KA-213

Art No. 174-185D

Suggested retail price: 782.00 €*
