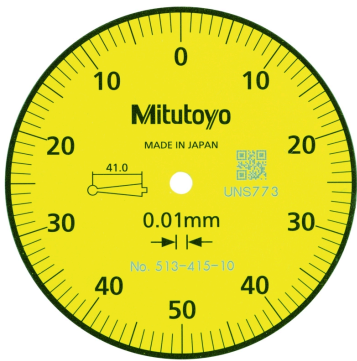


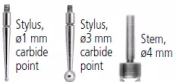
## Dial Test Indicator, Horizontal Type

Item number: 513-415-10A

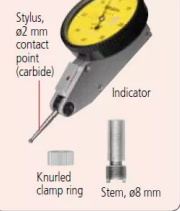
### Images



#### Plus set



#### Basic set



### Description

This is a Dial Test Indicator (Lever Type) which offers you the following benefits:

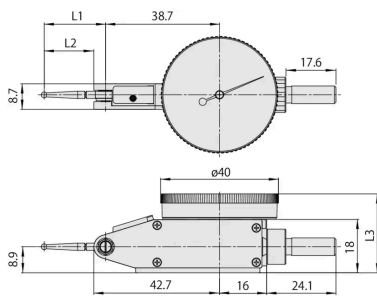
- Drastically enhanced durability, sensitivity and visibility.
- Glare-free flat crystal face allows easy reading of graduations.
- O-ring seal on the bezel has the effect of providing smooth rotation and prevents dust and oil from penetrating through to the dial face.
- The stylus length is on the dial face to reorder a replacement
- Multi-layer coatings on the crystal.

### Features

|                        |                                                                        |
|------------------------|------------------------------------------------------------------------|
| <b>Digital/Analog:</b> | Analog                                                                 |
| <b>Inch-Metric:</b>    | Metric                                                                 |
| <b>Delivered:</b>      | In a box with stem $\varnothing 8/4$ mm, stylus $\varnothing 1/2/3$ mm |
| <b>Range:</b>          | 1 mm                                                                   |
| <b>Graduation:</b>     | 0.01 mm                                                                |

|                                      |                     |
|--------------------------------------|---------------------|
| <b>MPE any 10 scale divisions:</b>   | 5 µm                |
| <b>MPE any 1/2 revolution:</b>       | 8 µm                |
| <b>MPE measuring range:</b>          | 10 µm               |
| <b>H MPE (Hysteresis):</b>           | 4 µm                |
| <b>R MPE (Repeatability):</b>        | 3 µm                |
| <b>Carbide stylus tip ø2 mm No.:</b> | 136013              |
| <b>Mass:</b>                         | 45 g                |
| <b>Contact point:</b>                | Thread M 1.7 x 0.35 |
| <b>Remarks:</b>                      | Plus set            |

## Dimensions



**L1:** 44.5 mm

**L2:** 41 mm

**L3:** 26.8 mm

**D Ø:** 40 mm

## Accessories

### Optional accessories:



### Limit Hands (Green) 2 pcs.

Dial Indicator Series 1, Test Indicator

Art No. 21AAB363

Price on application

### Standard accessories:



### Stem for Standard Type Series 513

D=4mm

Art No. 21CAB106

Suggested retail price: 15.00 €\*



### Stem for Standard Type Series 513

D=8mm  
Art No. 21CAB104  
Suggested retail price: 15.00 €\*  

---



### Stylus for Serie 513

D= 1mm, 41mm Length, Carbide  
Art No. 136235  
Suggested retail price: 15.00 €\*  

---



### Stylus for Serie 513

D= 2mm, 41mm Length, Carbide  
Art No. 136013  
Suggested retail price: 18.00 €\*  

---



### Stylus for Serie 513

D= 3mm, 41mm Length, Carbide  
Art No. 136236  
Suggested retail price: 15.00 €\*  

---



### Knurled Clamp Ring for Stem

Lever Indicator Serie 513  
Art No. 190322  
Suggested retail price: 12.00 €\*  

---

