

## Dial Gauge, Lug Back, ANSI/AGD Type

Item number: 3802A-10

### Images



### Description

This is a standard, inch dial indicator. It offers you the following benefits:

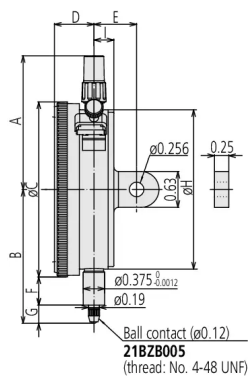
- Large-diameter dial face  $\varnothing = 78$  mm for easy reading
- Supplied with limit markers and a bezel clamp as standard
- 0.001" / 0.0001" graduation

### Features

<b>Digital/Analog:</b>	Analog
<b>Inch-Metric:</b>	Inch
<b>Range:</b>	0,025 "
<b>Range per rev.:</b>	0.01"
<b>Dial reading:</b>	0-10
<b>Delivered:</b>	With certificate of inspection, bezel clamp
<b>Graduation:</b>	0.0001"
<b>H MPE (Hysteresis):</b>	0,0001"

<b>R MPE (Repeatability):</b>	±0,00003"
<b>MPE first one revolution:</b>	±0,0001"
<b>MPE first 2 1/2 revolutions:</b>	±0,0001"
<b>Type:</b>	ANSI/AGD Standard
<b>Measuring force:</b>	0,4-2 N
<b>Stem:</b>	9.52 mm / 0.375"
<b>Contact point:</b>	Carbide tipped, thread: 4-48UNF
<b>Continuous dial:</b>	Yes
<b>Shockproof:</b>	Yes
<b>Mass:</b>	260 g

## Dimensions



**A:** 2.41 inch

**B:** 2.35 inch

**C:** 3.07 inch

**D:** 0.7 inch

**E:** 3/4 inch

**F:** 0.5 inch

**G:** 0.32 inch

**H:** 2.8 inch

**I:** 0.35 inch

## Accessories

Optional accessories:



### Limit Hands (green) 2pcs

Dial Indicator Series 2/3/4

Art No. 21AZB195

Price on application



### Spindle Lifting Lever

for Digital Indicator, A-Type Dial Indicator  
Serie 2/3/4

Art No. 21EZA198

Price on application

## Spindle Lifting Cable

for Indicator, L=500mm

Art No. 21JZA295

Price on application



## Spindle Lifting Cable with Auto Stop

for Indicator, L=300mm

Art No. 21JZA301

Price on application



### Standard accessories:

## Bezel Clamp for Dial Gauge

Inch, Series 2/3/4

Art No. 21RZA065

Suggested retail price: 5.00 €\*  
Photo Not Available



### Spare parts

#### Consumable spares:

## Contact Element Ball Point, 4-48UNF

1/4" Length, Carbide, Inch

Art No. 21BZB005

Suggested retail price: 13.30 €\*  
Photo Not Available



