

Dial Gauge, Flat Back, ANSI/AGD Type

Item number: 3416AB

Images



Description

This is a standard, inch dial indicator. It offers you the following benefits:

- Large-diameter dial face $\varnothing = 78$ mm for easy reading
- Supplied with limit markers and a bezel clamp as standard
- 0.001" / 0.0001" graduation

Features

Digital/Analog:	Analog
Inch-Metric:	Inch
Range:	1 "
Range per rev.:	0,1"
Dial reading:	$\pm 0-100$
Delivered:	With certificate of inspection, bezel clamp
Graduation:	0.001"
H MPE (Hysteresis):	0,0002"
R MPE (Repeatability):	$\pm 0,0002$ "
MPE first one revolution:	$\pm 0,001$ "
MPE first 2 1/2 revolutions:	$\pm 0,001$ "
MPE > 2 1/2-10 revolutions:	$\pm 0,002$ "
Type:	ANSI/AGD Standard
Measuring force:	0,4-1,8 N

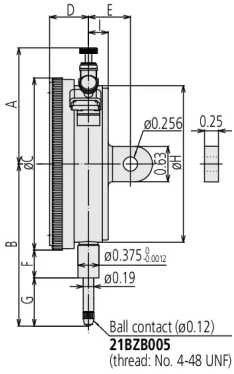
Stem: 9.52 mm / 0.375"

Contact point: Carbide tipped, thread: 4-48UNF

Continuous dial: Yes

Mass: 258 g

Dimensions



A: 2.07 inch

B: 3.39 inch

C: 3.07 inch

D: 0.7 inch

E: 3/4 inch

F: 0.5 inch

G: 1.36 inch

H: 2.8 inch

I: 0.35 inch

Accessories

Optional accessories:



Limit Hands (green) 2pcs

Dial Indicator Series 2/3/4

Art No. 21AZB195

Price on application

Bezel Clamp for Dial Gauge

Inch, Series 2/3/4

Art No. 21RZA065

Suggested retail price: 5.00 €*
Photo Not Available

Spare parts

Consumable spares:



Contact Element Ball Point, 4-48UNF

1/4" Length, Carbide, Inch

Art No. 21BZB005

Suggested retail price: 13.30 €*
