

Dial Gauge, Lug Back, ISO Type

Item number: 3058A-19

Images



Description

This is a standard dial indicator. It offers you the following benefits:

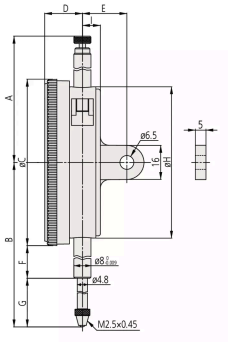
- Large-diameter dial face $\varnothing = 78$ mm for easy reading
- 0.01 / 0.001 mm graduation

Features

Digital/Analog:	Analog
Inch-Metric:	Metric
Type:	EN ISO Standard
Range:	50 mm
Range per rev.:	1 mm
Dial reading:	$\pm 0-100$
Delivered:	With certificate of inspection
Graduation:	0.01 mm
MPE any 1/10 revolution:	10 μm
MPE any 1/2 revolution:	12 μm
MPE any 1 revolution:	13 μm
MPE measuring range:	30 μm
H MPE (Hysteresis):	6 μm

R MPE (Repeatability):	3 µm
Measuring force:	0,4-3 N
Stem:	8 mm
Contact point:	Carbide tipped, thread: M 2.5 x 0.45 mm
Coaxial revolution counter:	Yes
Shockproof:	Yes
Mass:	298 g

Dimensions



- A:** 81.9 mm
- B:** 142.3 mm
- C:** 78 mm
- D:** 17.7 mm
- E:** 21 mm
- F:** 43.9 mm
- G:** 59.4 mm
- H:** 71 mm
- I:** 9 mm

Accessories

Optional accessories:



Limit Hands (green) 2pcs

Dial Indicator Series 2/3/4
Art No. 21AZB195
[Price on application](#)



Bezel Clamp for Dial Gauge

Metric, Series 2/3/4
Art No. 21AZB148
[Price on application](#)

Spare parts

Consumable spares:



**Contact Element Ball Point,
M2,5x0,45**

8,3mm Length, Metric

Art No. 21AZA319

Suggested retail price: 6.30 €*
