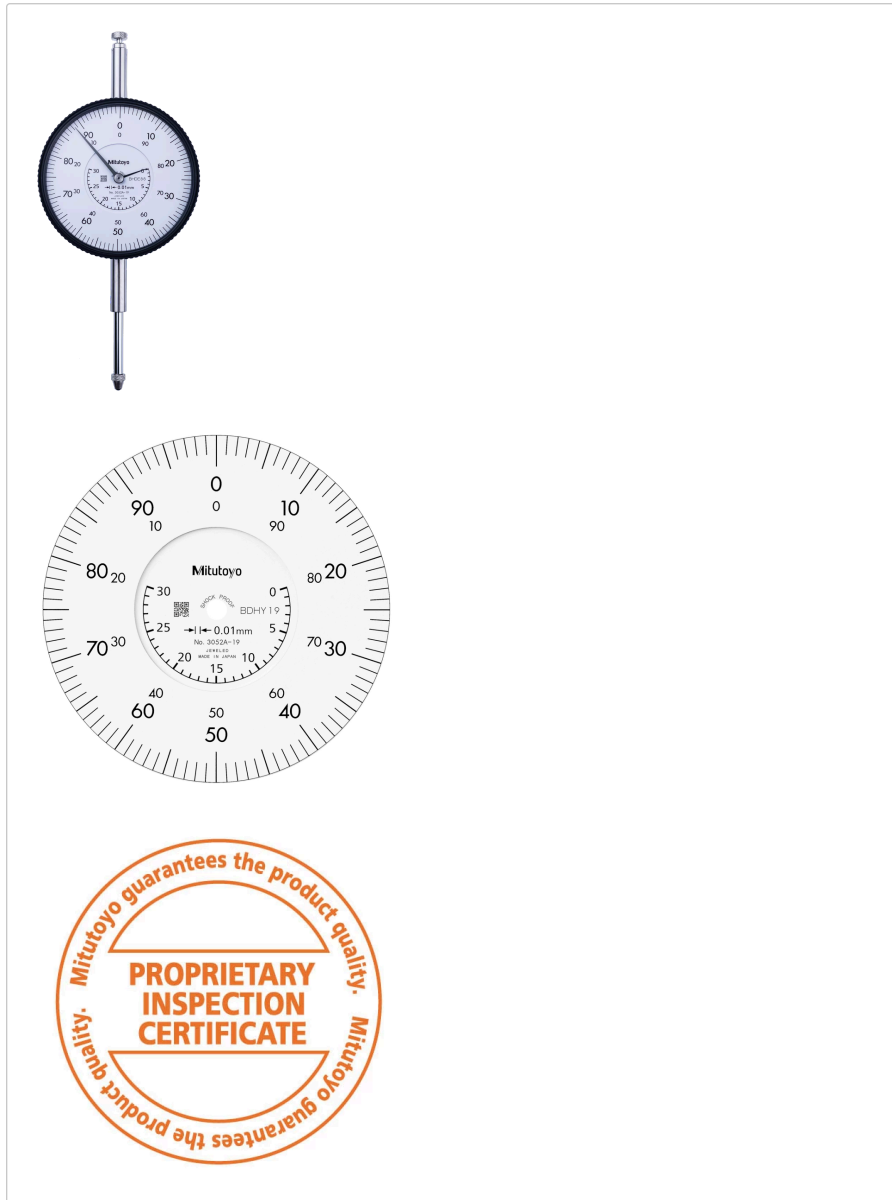


Dial Gauge, Lug Back, ISO Type

Item number: 3052A-19

Images



Description

This is a standard dial indicator. It offers you the following benefits:

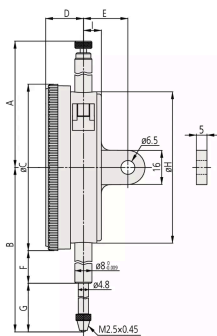
- Large-diameter dial face $\varnothing = 78$ mm for easy reading
- 0.01 / 0.001 mm graduation

Features

Digital/Analog:	Analog
Inch-Metric:	Metric
Type:	EN ISO Standard
Range:	30 mm
Range per rev.:	1 mm
Dial reading:	± 0.100
Delivered:	With certificate of inspection
Graduation:	0.01 mm

MPE any 1/10 revolution:	10 µm
MPE any 1/2 revolution:	11 µm
MPE any 1 revolution:	12 µm
MPE measuring range:	25 µm
H MPE (Hysteresis):	5 µm
R MPE (Repeatability):	3 µm
Measuring force:	0,4-2,5 N
Stem:	8 mm
Contact point:	Carbide tipped, thread: M 2.5 x 0.45 mm
Continuous dial:	Yes
Coaxial revolution counter:	Yes
Shockproof:	Yes
Mass:	285 g

Dimensions



- A:** 72.9 mm
- B:** 104.3 mm
- C:** 78 mm
- D:** 17.7 mm
- E:** 21 mm
- F:** 25.9 mm
- G:** 39.4 mm
- H:** 71 mm
- I:** 9 mm

Accessories

Optional accessories:



Limit Hands (green) 2pcs

Dial Indicator Series 2/3/4

Art No. 21AZB195

Price on application



Bezel Clamp for Dial Gauge

Metric, Series 2/3/4

Art No. 21AZB148

Price on application

Spare parts

Consumable spares:



Contact Element Ball Point, M2,5x0,45

8,3mm Length, Metric

Art No. 21AZA319

Suggested retail price: 6.30 €*