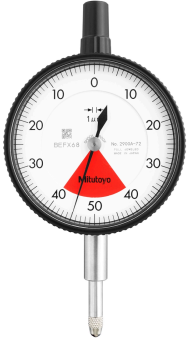


## Dial Gauge, Lug Back, ISO Type

Item number: 2900A-72

### Images



### Description

#### Graduation 0.001 mm

This is a one revolution dial indicator. It offers you the following benefits:

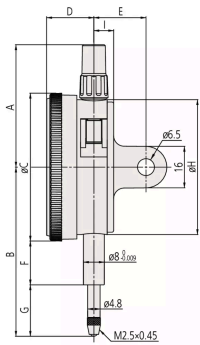
- Bezel clamp and lifting lever (optional) can be attached to either right or left side.
- No through screw holes on the frame as well as the use of an O-ring prevents water or oil penetration.
- It eliminates the possibility of reading errors due to miscounting multiple revolutions.

### Features

|                        |                                |
|------------------------|--------------------------------|
| <b>Digital/Analog:</b> | Analog                         |
| <b>Inch-Metric:</b>    | Metric                         |
| <b>Type:</b>           | EN ISO Standard                |
| <b>Delivered:</b>      | With certificate of inspection |
| <b>Range:</b>          | 0.08 mm                        |
| <b>Plunger Stroke:</b> | 4 mm                           |
| <b>Range per rev.:</b> | 0,1 mm                         |
| <b>Dial reading:</b>   | 40-0-40                        |
| <b>Graduation:</b>     | 0.001 mm                       |

|                                 |   |
|---------------------------------|---|
| <b>MPE any 1/10 revolution:</b> | 2 µm                                    |
| <b>MPE measuring range:</b>     | 3 µm                                    |
| <b>H MPE (Hysteresis):</b>      | 2 µm                                    |
| <b>R MPE (Repeatability):</b>   | 1 µm                                    |
| <b>Measuring force:</b>         | 0,4-2 N                                 |
| <b>Mass:</b>                    | 149 g                                   |
| <b>Stem:</b>                    | 8 mm                                    |
| <b>Contact point:</b>           | Carbide tipped, thread: M 2.5 x 0.45 mm |
| <b>One revolution:</b>          | Yes                                     |
| <b>Shockproof:</b>              | Yes                                     |

## Dimensions



**A:** 47.2 mm

**B:** 66 mm

**C:** 57 mm

**D:** 18.1 mm

**E:** 20 mm

**F:** 16.9 mm

**G:** 20.6 mm

**H:** 52 mm

**I:** 7.6 mm

## Accessories

Optional accessories:



### Limit Hands (green) 2pcs

Dial Indicator Series 2/3/4

Art No. 21AZB195

Price on application



### Bezel Clamp for Dial Gauge

Metric, Series 2/3/4

Art No. 21AZB148

Price on application



## Spindle Lifting Lever

for Digital Indicator, A-Type Dial Indicator  
Serie 2/3/4

Art No. 21EZA198

[Price on application](#)

## Spindle Lifting Cable

for Indicator, L=500mm

Art No. 21JZA295

[Price on application](#)



## Spindle Lifting Cable with Auto Stop

for Indicator, L=300mm

Art No. 21JZA301

[Price on application](#)



## Spare parts

Consumable spares:



## Contact Element Ball Point, M2,5x0,45

7,3mm Length, Carbide, Metric

Art No. 901312

Suggested retail price: 14.00 €\*