

## Dial Gauge, Flat Back, ANSI/AGD Type

Item number: 2776AB

### Images



### Description

This is a standard, inch dial indicator. It offers you the following benefits:

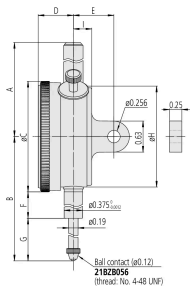
- Bezel clamp and lifting lever (optional) can be attached to either right or left side. They can be easily installed and removed without tools.
- No through screw holes on the frame and secure adhesion between the bezel and the crystal as well as the use of an O-ring prevents water or oil penetration.

### Features

<b>Digital/Analog:</b>	Analog
<b>Inch-Metric:</b>	Inch
<b>Delivered:</b>	With certificate of inspection, bezel clamp
<b>Range:</b>	1 "
<b>Range per rev.:</b>	0.05"
<b>Dial reading:</b>	±0-50
<b>Graduation:</b>	0.0005"
<b>H MPE (Hysteresis):</b>	0,0002"
<b>R MPE (Repeatability):</b>	±0,0001"
<b>MPE first one revolution:</b>	±0,0005"
<b>MPE first 2 1/2 revolutions:</b>	±0,0005"
<b>MPE &gt; 2 1/2-10 revolutions:</b>	±0,0015"
<b>MPE &gt; 10-20 revolutions:</b>	±0,002"

<b>Type:</b>	ANSI/AGD Standard
<b>Measuring force:</b>	0,4-2,5 N
<b>Mass:</b>	139 g
<b>Stem:</b>	9.52 mm / 0.375"
<b>Contact point:</b>	Carbide tipped, thread: 4-48UNF
<b>Continuous dial:</b>	Yes

### Dimensions



- A:** 1.53 inch
- B:** 3.02 inch
- C:** 2.24 inch
- D:** 0.71 inch
- E:** 3/4 inch
- F:** 0.54 inch
- G:** 1.37 inch
- H:** 2.05 inch
- I:** 0.3 inch

### Accessories

#### Optional accessories:



#### Limit Hands (green) 2pcs

Dial Indicator Series 2/3/4  
 Art No. 21AZB195  
 Price on application

#### Standard accessories:



#### Bezel Clamp for Dial Gauge

Inch, Series 2/3/4  
 Art No. 21RZA065  
 Suggested retail price: 2.10 €\*

Consumable spares:

---



**Contact Element Ball Point, 4-48UNF**

1/4" Length, Carbide, Inch

Art No. 21BZB005

Suggested retail price: 15.00 €\*  

---