

# Dial Gauge, Lug Back, ANSI/AGD Type

Item number: 2415A

## Images



ANSI/AGD Type Unit: in

Code No.	A	B	C	D	E	F	G	H	I	Mass (g)
2414A	1.53	2.52	2.24	0.71	3/4	0.54	0.87	2.05	0.30	164
2415A	1.53	2.52	2.24	0.71	3/4	0.54	0.87	2.05	0.30	164
2514A	1.53	2.52	2.24	0.71	3/4	0.54	0.87	2.05	0.30	164
2506A	1.86	2.14	2.24	0.71	3/4	0.54	0.48	2.05	0.30	164
2507A	1.86	2.14	2.24	0.71	3/4	0.54	0.48	2.05	0.30	164
2514A	1.53	2.52	2.24	0.71	3/4	0.54	0.87	2.05	0.30	164
2922A	1.86	2.14	2.24	0.71	3/4	0.54	0.48	2.05	0.30	164
2356A-10	1.86	2.26	2.24	0.71	3/4	0.54	0.59	2.05	0.30	163
2358A-10	1.53	2.50	2.24	0.71	3/4	0.54	0.85	2.05	0.30	164
2802A-10	1.86	2.02	2.24	0.71	3/4	0.54	0.37	2.05	0.30	164
2803A-10	1.86	2.02	2.24	0.71	3/4	0.54	0.37	2.05	0.30	164
2804A-10	1.86	2.04	2.24	0.71	3/4	0.54	0.38	2.05	0.30	166
2805A-10	1.86	2.04	2.24	0.71	3/4	0.54	0.38	2.05	0.30	166
2806A-10	1.86	2.04	2.24	0.71	3/4	0.54	0.38	2.05	0.30	164
2923A-10	1.86	2.04	2.24	0.71	3/4	0.54	0.38	2.05	0.30	164



## Description

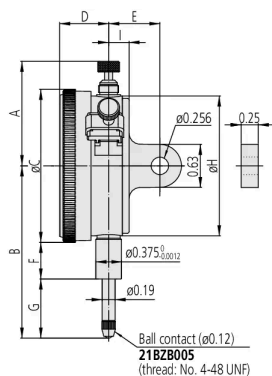
A Mitutoyo multi-revolution dial indicator suited to comparison measurement applications.

## Features

<b>Digital/Analog:</b>	Analog
<b>Inch-Metric:</b>	Inch
<b>Range:</b>	0,5 "
<b>Range per rev.:</b>	0,1"
<b>Dial reading:</b>	0-50-0
<b>Delivered:</b>	With certificate of inspection, bezel clamp
<b>Graduation:</b>	0,001"
<b>H MPE (Hysteresis):</b>	0,0002"

<b>R MPE (Repeatability):</b>	±0,0002"
<b>MPE first one revolution:</b>	±0,001"
<b>MPE first 2 1/2 revolutions:</b>	±0,001"
<b>MPE &gt; 2 1/2-10 revolutions:</b>	±0,001"
<b>Type:</b>	ANSI/AGD Standard
<b>Measuring force:</b>	0,4-1,8 N
<b>Stem:</b>	9.52 mm / 0.375"
<b>Contact point:</b>	Carbide tipped, thread: 4-48UNF
<b>Balanced dial:</b>	Yes
<b>Continuous dial:</b>	Yes
<b>Mass:</b>	164 g

## Dimensions



**A:** 1.53 inch

**B:** 2.52 inch

**C:** 2.24 inch

**D:** 0.71 inch

**E:** 3/4 inch

**F:** 0.54 inch

**G:** 0.87 inch

**H:** 2.05 inch

**I:** 0.3 inch

## Accessories

### Optional accessories:



### Limit Hands (green) 2pcs

Dial Indicator Series 2/3/4

Art No. 21AZB195

Price on application



### Spindle Lifting Lever

for Digital Indicator, A-Type Dial Indicator  
Serie 2/3/4

Art No. 21EZA198

Price on application

## Spindle Lifting Cable

for Indicator, L=500mm

Art No. 21JZA295

Price on application



## Spindle Lifting Cable with Auto Stop

for Indicator, L=300mm

Art No. 21JZA301

Price on application



### Standard accessories:

## Bezel Clamp for Dial Gauge

Inch, Series 2/3/4

Art No. 21RZA065

Suggested retail price: 5.00 €\*  
Photo Not Available



### Spare parts

#### Consumable spares:

## Contact Element Ball Point, 4-48UNF

1/4" Length, Carbide, Inch

Art No. 21BZB005

Suggested retail price: 13.30 €\*  
Photo Not Available



