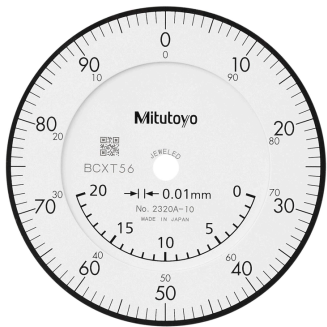


## Dial Gauge, Lug Back, ISO Type

Item number: 2320A-10

### Images



### Description

#### Standard Type, 20 mm Range, 0.01 mm Graduation

This is a standard dial indicator. It offers you the following benefits:

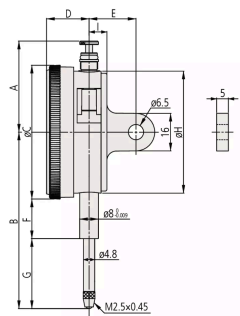
- Bezel clamp and lifting lever (optional) can be attached to either right or left side. They can be easily installed and removed without tools.
- No through screw holes on the frame and secure adhesion between the bezel and the crystal as well as the use of an O-ring prevents water or oil penetration.

### Features

<b>Digital/Analog:</b>	Analog
<b>Inch-Metric:</b>	Metric
<b>Type:</b>	EN ISO Standard
<b>Delivered:</b>	With certificate of inspection
<b>Range:</b>	20 mm
<b>Range per rev.:</b>	1 mm

<b>Dial reading:</b>	±0-100
<b>Graduation:</b>	0.01 mm
<b>MPE any 1/10 revolution:</b>	6 µm
<b>MPE any 1/2 revolution:</b>	10 µm
<b>MPE any 1 revolution:</b>	11 µm
<b>MPE measuring range:</b>	20 µm
<b>H MPE (Hysteresis):</b>	4 µm
<b>R MPE (Repeatability):</b>	3 µm
<b>Measuring force:</b>	0,4-2 N
<b>Mass:</b>	150 g
<b>Stem:</b>	8 mm
<b>Contact point:</b>	Carbide tipped, thread: M 2.5 x 0.45 mm
<b>Continuous dial:</b>	Yes
<b>Coaxial revolution counter:</b>	Yes
<b>Cushioned end point:</b>	Yes

## Dimensions



- A:** 38.5 mm
- B:** 75.2 mm
- C:** 57 mm
- D:** 18.1 mm
- E:** 20 mm
- F:** 16.9 mm
- G:** 29.8 mm
- H:** 52 mm
- I:** 7.6 mm

## Accessories

Optional accessories:



### Limit Hands (green) 2pcs

Dial Indicator Series 2/3/4  
Art No. 21AZB195

Price on application



### Bezel Clamp for Dial Gauge

Metric, Series 2/3/4

Art No. 21AZB148

Price on application

### Spindle Lifting Lever

for S and A-Type Serie 2,3 >10/0,4" up to 20mm/0,8"

Art No. 21AZB150

Price on application



### Spare parts

Consumable spares:



### Contact Element Ball Point, M2,5x0,45

7,3mm Length, Carbide, Metric

Art No. 901312

Suggested retail price: 14.00 €\*