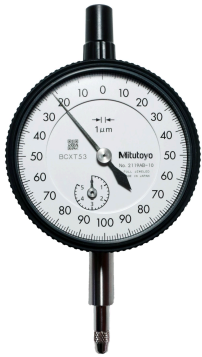


Dial Gauge, Lug Back, ISO Type

Item number: 2119A-10

Images



Description

Standard Type, 2 and 5 mm Range, 0.001 / 0.005 mm Graduation

This is a standard dial indicator. It offers you the following benefits:

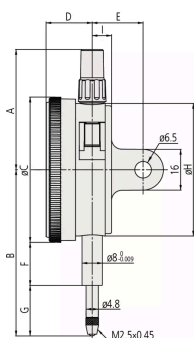
- Bezel clamp and lifting lever (optional) can be attached to either right or left side. They can be easily installed and removed without tools.
- No through screw holes on the frame and secure adhesion between the bezel and the crystal as well as the use of an O-ring prevents water or oil penetration.

Features

Digital/Analog:	Analog
Inch-Metric:	Metric
Type:	EN ISO Standard
Range:	5 mm
Range per rev.:	0,2 mm
Dial reading:	0-100-0
Delivered:	With certificate of inspection
Graduation:	0.001 mm
MPE any 1/10 revolution:	4 μm
MPE any 1/2 revolution:	6 μm
MPE any 1 revolution:	6.5 μm
MPE measuring range:	10 μm

H MPE (Hysteresis):	2.5 μ m
R MPE (Repeatability):	2 μ m
Measuring force:	0,4-1,5 N
Stem:	8 mm
Contact point:	Carbide tipped, thread: M 2.5 x 0.45 mm
Balanced dial:	Yes
Mass:	146 g

Dimensions



A: 47,2 mm

B: 60.7 mm

C: 57 mm

D: 18.1 mm

E: 20 mm

F: 16.9 mm

G: 15.3 mm

H: 52 mm

I: 7.6 mm

Accessories

Optional accessories:



Limit Hands (green) 2pcs

Dial Indicator Series 2/3/4

Art No. 21AZB195

[Price on application](#)



Bezel Clamp for Dial Gauge

Metric, Series 2/3/4

Art No. 21AZB148

[Price on application](#)



Spindle Lifting Lever

for Digital Indicator, A-Type Dial Indicator
Serie 2/3/4

Art No. 21EZA198

[Price on application](#)

Spindle Lifting Cable

for Indicator, L=500mm

Art No. 21JZA295

[Price on application](#)



Spindle Lifting Cable with Auto Stop

for Indicator, L=300mm

Art No. 21JZA301

[Price on application](#)



Spare parts

Consumable spares:



Contact Element Ball Point, M2,5x0,45

7,3mm Length, Carbide, Metric

Art No. 901312

Suggested retail price: 5.00 €*