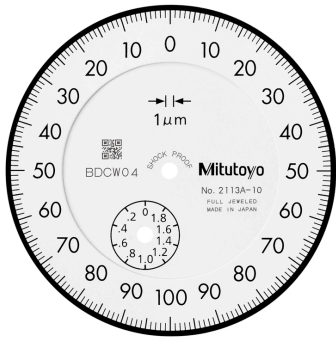


Dial Gauge, Flat Back, ISO Type

Item number: 2113AB-10

Images



Description

Standard Type, 2 and 5 mm Range, 0.001 / 0.005 mm Graduation

This is a standard dial indicator. It offers you the following benefits:

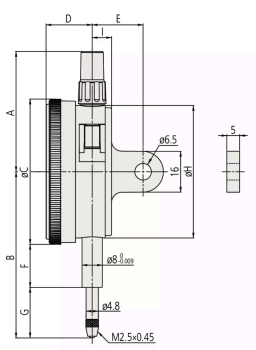
- Bezel clamp and lifting lever (optional) can be attached to either right or left side. They can be easily installed and removed without tools.
- No through screw holes on the frame and secure adhesion between the bezel and the crystal as well as the use of an O-ring prevents water or oil penetration.

Features

Digital/Analog:	Analog
Inch-Metric:	Metric
Type:	EN ISO Standard
Delivered:	With certificate of inspection
Range:	2 mm
Range per rev.:	0,2 mm

Dial reading:	0-100-0
Graduation:	0.001 mm
MPE any 1/10 revolution:	2.5 µm
MPE any 1/2 revolution:	4 µm
MPE any 1 revolution:	4.5 µm
MPE measuring range:	7 µm
H MPE (Hysteresis):	2 µm
R MPE (Repeatability):	1 µm
Measuring force:	0,4-1,5 N
Mass:	139 g
Stem:	8 mm
Contact point:	Carbide tipped, thread: M 2.5 x 0.45 mm
Balanced dial:	Yes
Shockproof:	Yes

Dimensions



- A:** 47,2 mm
- B:** 61 mm
- C:** 57 mm
- D:** 18.1 mm
- E:** 20 mm
- F:** 16.9 mm
- G:** 15.6 mm
- H:** 52 mm
- I:** 7.6 mm

Accessories

Optional accessories:



Limit Hands (green) 2pcs

Dial Indicator Series 2/3/4
 Art No. 21AZB195
 Price on application



Bezel Clamp for Dial Gauge

Metric, Series 2/3/4

Art No. 21AZB148

[Price on application](#)

Spindle Lifting Lever

for Digital Indicator, A-Type Dial Indicator
Serie 2/3/4

Art No. 21EZA198

[Price on application](#)



Spindle Lifting Cable

for Indicator, L=500mm

Art No. 21JZA295

[Price on application](#)



Spindle Lifting Cable with Auto Stop

for Indicator, L=300mm

Art No. 21JZA301

[Price on application](#)



Spare parts

Consumable spares:



**Contact Element Ball Point,
M2,5x0,45**

7,3mm Length, Carbide, Metric

Art No. 901312

Suggested retail price: 14.00 €*
