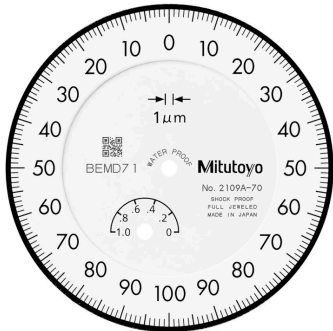
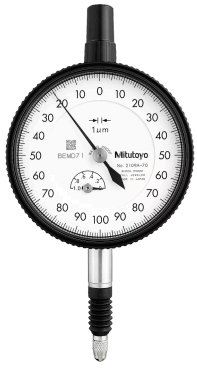


## Dial Gauge, Flat Back, ISO Type

Item number: 2109AB-70

### Images



### Description

#### Standard Type, 1 mm Range, 0.001 mm Graduation

This is a standard dial indicator. It offers you the following benefits:

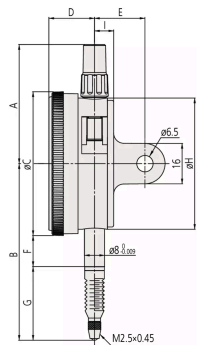
- Bezel clamp and lifting lever (optional) can be attached to either right or left side. They can be easily installed and removed without tools.
- No through screw holes on the frame and secure adhesion between the bezel and the crystal as well as the use of an O-ring prevents water or oil penetration.

### Features

<b>Digital/Analog:</b>	Analog
<b>Inch-Metric:</b>	Metric
<b>Type:</b>	EN ISO Standard

<b>Delivered:</b>	With certificate of inspection
<b>Range:</b>	1 mm
<b>Range per rev.:</b>	0,2 mm
<b>Dial reading:</b>	0-100-0
<b>Graduation:</b>	0.001 mm
<b>MPE any 1/10 revolution:</b>	2.5 µm
<b>MPE any 1/2 revolution:</b>	4 µm
<b>MPE any 1 revolution:</b>	4.5 µm
<b>MPE measuring range:</b>	5 µm
<b>H MPE (Hysteresis):</b>	2 µm
<b>R MPE (Repeatability):</b>	1 µm
<b>Measuring force:</b>	0,4-2 N
<b>Mass:</b>	140 g
<b>Stem:</b>	8 mm
<b>Contact point:</b>	Carbide tipped, thread: M 2.5 x 0.45 mm
<b>Balanced dial:</b>	Yes
<b>Shockproof:</b>	Yes

### Dimensions



- A:** 47,2 mm
- B:** 65.3 mm
- C:** 57 mm
- D:** 18.1 mm
- E:** 20 mm
- F:** 12.3 mm
- G:** 24.5 mm
- H:** 52 mm
- I:** 7.6 mm

### Accessories

Optional accessories:



### Limit Hands (green) 2pcs

Dial Indicator Series 2/3/4

Art No. 21AZB195

Price on application



### Bezel Clamp for Dial Gauge

Metric, Series 2/3/4

Art No. 21AZB148

Price on application



### Spindle Lifting Lever

for Digital Indicator, A-Type Dial Indicator  
Serie 2/3/4

Art No. 21EZA198

Price on application

## Spare parts

Consumable spares:



### Contact Element Ball Point, M2,5x0,45

7,3mm Length, Carbide, Metric

Art No. 901312

Suggested retail price: 14.00 €\*

## **NBR Rubber Boot**

Dial Gauge IP64

Art No. 21AAB563

Suggested retail price: **1.60 €\***

