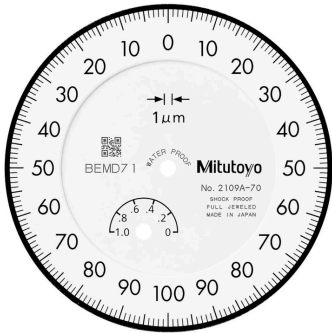
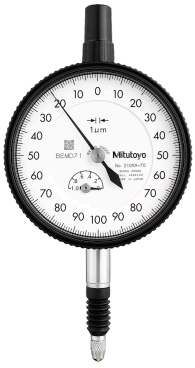


Dial Gauge, Lug Back, ISO Type

Item number: 2109A-70

Images



Description

Standard Type, 1 mm Range, 0.001 mm Graduation

This is a standard dial indicator. It offers you the following benefits:

- Bezel clamp and lifting lever (optional) can be attached to either right or left side. They can be easily installed and removed without tools.
- No through screw holes on the frame and secure adhesion between the bezel and the crystal as well as the use of an O-ring prevents water or oil penetration.

Features

Digital/Analog:	Analog
Inch-Metric:	Metric
Type:	EN ISO Standard

Range:	1 mm
Range per rev.:	0,2 mm
Dial reading:	0-100-0
Delivered:	With certificate of inspection
Graduation:	0.001 mm
MPE any 1/10 revolution:	2.5 µm
MPE any 1/2 revolution:	4 µm
MPE any 1 revolution:	4.5 µm
MPE measuring range:	5 µm
H MPE (Hysteresis):	2 µm
R MPE (Repeatability):	1 µm
Measuring force:	0,4-2 N
Stem:	8 mm
Contact point:	Carbide tipped, thread: M 2.5 x 0.45 mm
Balanced dial:	Yes
Shockproof:	Yes
Mass:	149 g

Dimensions

Technical drawing of a dial indicator showing dimensions A through I. The drawing includes a side view of the indicator with a dial and a detail view of the contact point. The contact point is a carbide tip with an M2.5 x 0.45 thread. The dimensions are as follows:

- A:** 47,2 mm
- B:** 65.3 mm
- C:** 57 mm
- D:** 18.1 mm
- E:** 20 mm
- F:** 12.3 mm
- G:** 24.5 mm
- H:** 52 mm
- I:** 7.6 mm

Accessories

Optional accessories:



Limit Hands (green) 2pcs

Dial Indicator Series 2/3/4

Art No. 21AZB195

Price on application



Bezel Clamp for Dial Gauge

Metric, Series 2/3/4

Art No. 21AZB148

Price on application



Spindle Lifting Lever

for Digital Indicator, A-Type Dial Indicator
Serie 2/3/4

Art No. 21EZA198

Price on application

Spare parts

Consumable spares:



Contact Element Ball Point, M2,5x0,45

7,3mm Length, Carbide, Metric

Art No. 901312

Suggested retail price: 5.00 €*

NBR Rubber Boot

Dial Gauge IP64

Art No. 21AAB563

Suggested retail price: **1.60 €***

